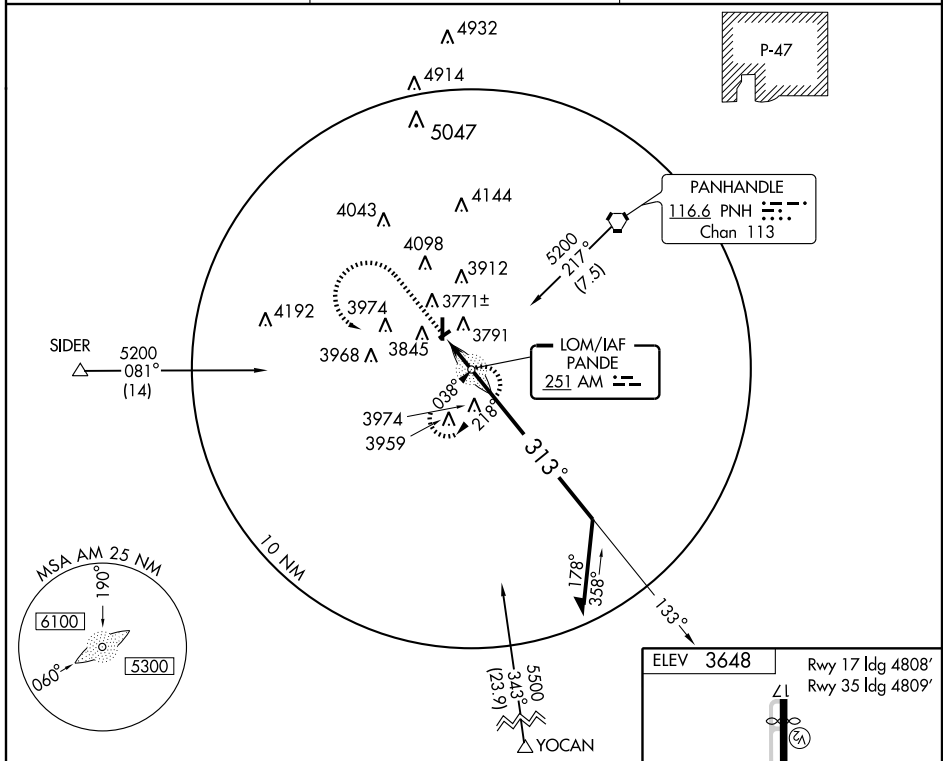


NDB AM <b>251</b>	APP CRS <b>313°</b>	Rwy ldg TDZE Apt Elev <b>N/A</b> <b>3648</b>
----------------------	------------------------	---

Use Rick Husband Amarillo Intl altimeter setting.  
Circling not authorized to runway 5-23.

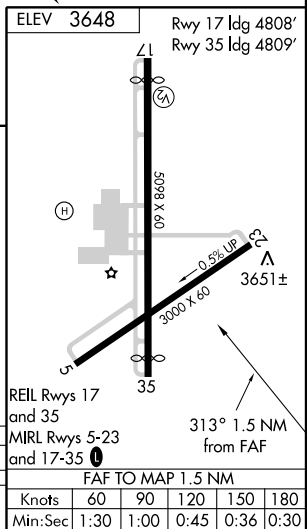
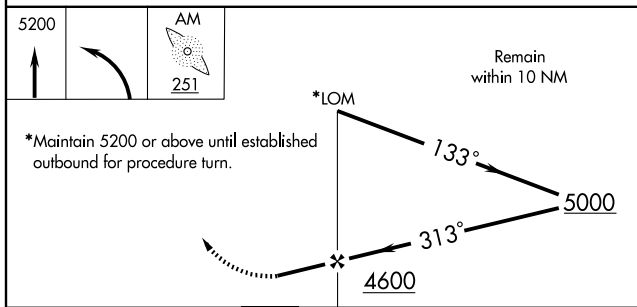
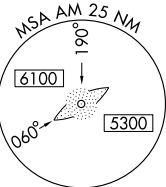
MISSED APPROACH: Climb to 5200, then left turn direct AM LOM and hold.

AMARILLO APP CON * <b>119.5 307.0</b>	CLNC DEL <b>125.4</b>	UNICOM <b>122.8 (CTAF)</b>
--	--------------------------	-------------------------------



SC-2, 22 OCT 2009 to 19 NOV 2009

SC-2, 22 OCT 2009 to 19 NOV 2009



CATEGORY	A	B	C	D
CIRCLING	4220-1 572 (600-1)	4260-1 612 (700-1)	4260-1 3/4 612 (700-1 3/4)	4480-2 3/4 832 (900-2 3/4)

FAF TO MAP 1.5 NM					
Knots	60	90	120	150	180
Min:Sec	1:30	1:00	0:45	0:36	0:30