

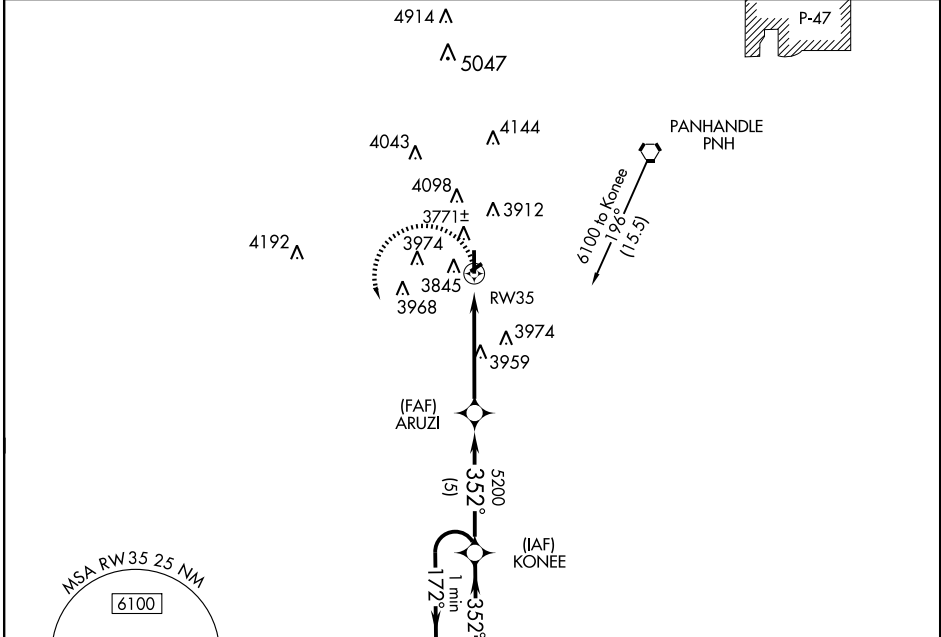
APP CRS	Rwy ldg	4809
352°	TDZE	3642
	Apt Elev	3648

GPS RWY 35

AMARILLO/TRADEWIND (TDW)

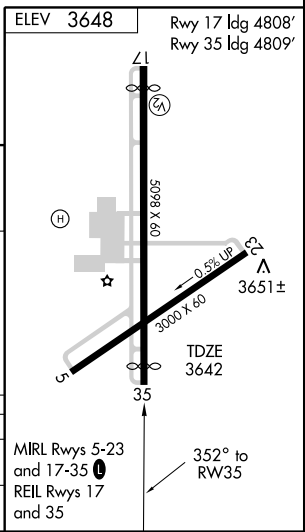
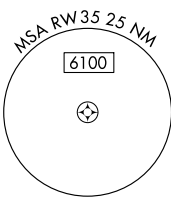
▼	Use Rick Husband Amarillo Intl altimeter setting.	MISSED APPROACH: Climbing left turn to 6100 direct KONEE WP and hold.
▲ NA	Circling not authorized to runway 5-23.	

AMARILLO APP CON * 119.5 307.0	CLNC DEL 125.4	UNICOM 122.8 (CTAF) 0
--	--------------------------	---------------------------------



SC-2, 22 OCT 2009 to 19 NOV 2009

SC-2, 22 OCT 2009 to 19 NOV 2009



6100	← 172°	→ 352°	→ 352°	→ 352°	→ 352°
			5200		
			2.86°		
			TCH 45		
			5 NM	5 NM	

CATEGORY	A	B	C	D
S-35	4300-1	658 (700-1)	4300-1 $\frac{3}{4}$ 658 (700-1 $\frac{3}{4}$)	4300-2 658 (700-2)
CIRCLING	4300-1	652 (700-1)	4300-1 $\frac{3}{4}$ 652 (700-1 $\frac{3}{4}$)	4480-2 $\frac{3}{4}$ 832 (900-2 $\frac{3}{4}$)