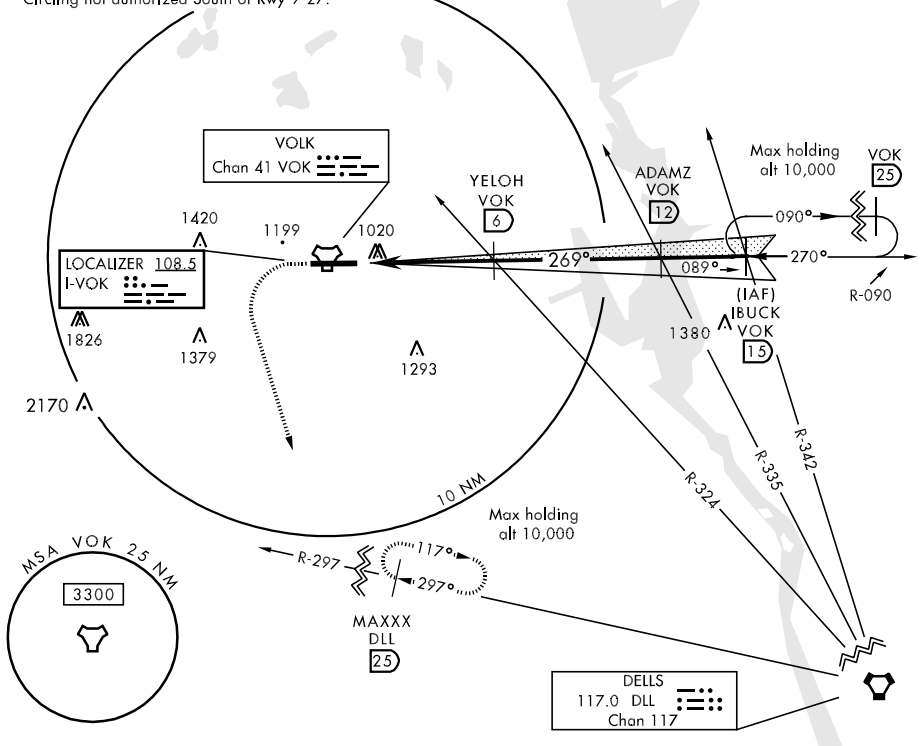


LOC I-VOK 108.5	APCH CRS 269°	Rwy Idg TDZE Arpt Elev 9000 905 912	AL-714 [USAF]	VOLK FIELD (KVOK)
* When ALS inop, increase CAT ABCDE RVR to 40 and vis to 3/8 mile. ** When ALS inop, increase CAT AB RVR to 50 and vis to 1 mile, CAT CD RVR to 60 and vis to 1 1/4 miles, and CAT E vis to 1 1/2 miles.		ALSF-1	MISSED APPROACH: Climb to 2200, then climbing left turn to 3300 to intercept the DLL R-297 to MAXXX and hold.	
ATIS 120.475	VOLK APP CON 135.25 290.8	VOLK TOWER ★ 127.5 0 (CTAF) 239.25 0	GND CON 121.9 275.8	CHICAGO CENTER 133.3 257.92

*** Circling not authorized South of Rwy 9-27.



EC-3, 22 OCT 2009 to 19 NOV 2009

EC-3, 22 OCT 2009 to 19 NOV 2009

EMERG SAFE ALT 100 NM 4200					ELEV 912						
2200	3300	MAXXX DLL 25	YELOH VOK 6	ADAMZ VOK 12	IBUCK/VOK 15	R-090	2900				
TACAN	AKETT VOK 1.3	VOK 2.2	2500	269°	2700	GS 2.85°	TCH 53				
.5		4.5 NM									
CATEGORY	A	B	C	D	E	HIRL Rwy 9-27					
S-ILS 27 *	1105/24		200		(200-1/2)						
S-LOC 27 **	1320/24	415 (500-1/2)	1320/40	415 (500-3/8)	1320/50		415 (500-1)				
CIRCLING ***	1400-1	1500-1	1500-1 1/2	1500-2	1580-2 1/4		668 (700-2 1/4)				
	488 (500-1)	588 (600-1)	588 (600-1 1/2)	588 (600-2)	668 (700-2 1/4)						
						FAF to MAP 4.5 NM					
						Knots	60	90	120	150	180
						Min:Sec	4:30	3:00	2:15	1:48	1:30

