

KOKOMO, INDIANA

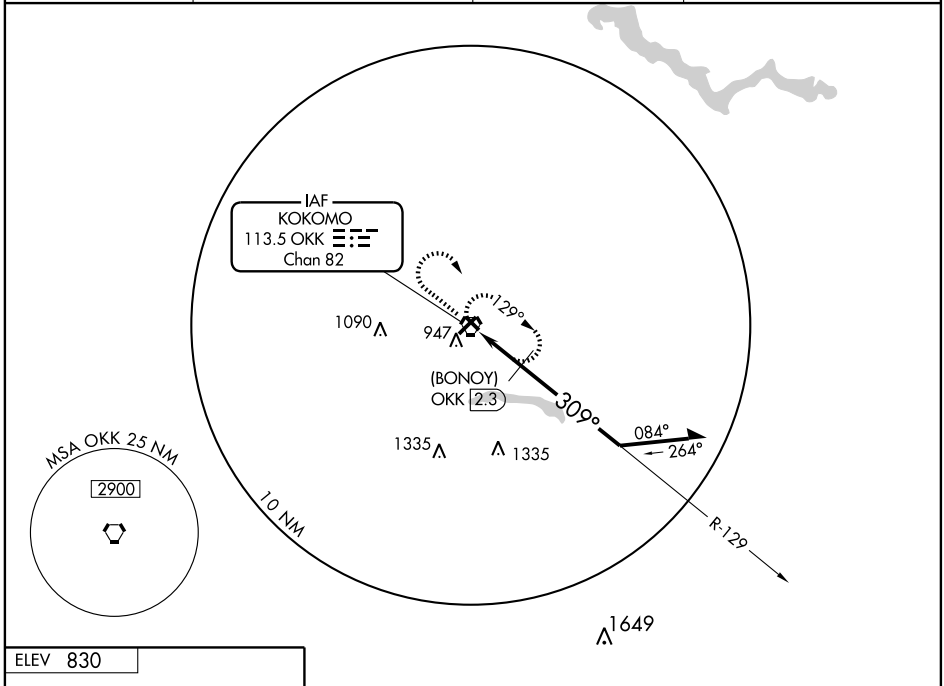
AL-711 (FAA)

VORTAC OKK 113.5 Chan 82	APP CRS 309°	Rwy Idg TDZE Apt Elev	4001 826 830
--	------------------------	-----------------------------	---

VOR or GPS RWY 32

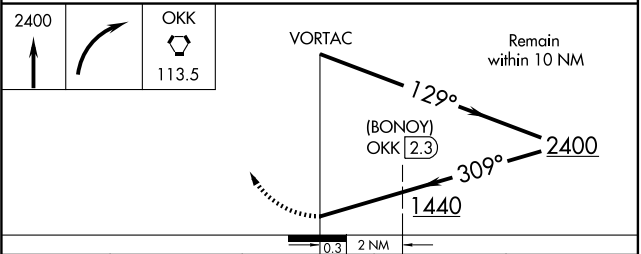
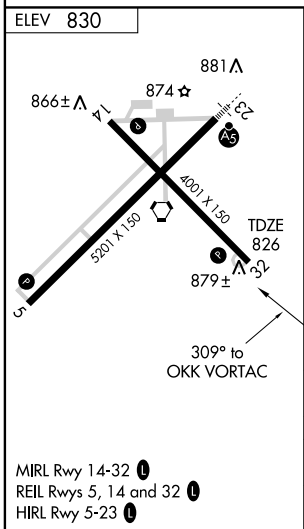
KOKOMO MUNI (OKK)

<p>▲</p>		<p>MISSED APPROACH: Climb to 2400 then right turn direct OKK VORTAC and hold.</p>	
AWOS-3 113.5	GRISSOM APP CON ★ 121.05 379.3	CLNC DEL 120.0	UNICOM 123.0 (CTAF) 0



EC-2, 22 OCT 2009 to 19 NOV 2009

EC-2, 22 OCT 2009 to 19 NOV 2009



CATEGORY	A	B	C	D
S-32	1440-1	614 (700-1)	1440-1¾ 614 (700-1¾)	1440-2 614 (700-2)
CIRCLING	1440-1	610 (700-1)	1440-1¾ 610 (700-1¾)	1440-2 610 (700-2)
DME MINIMUMS				
S-32	1200-1 374 (400-1)			1200-1¼ 374 (400-1¼)
CIRCLING	1260-1 430 (500-1)	1280-1 450 (500-1)	1280-1½ 450 (500-1½)	1380-2 550 (600-2)

KOKOMO, INDIANA
Amdt 19A 08157

40°32'N - 86°04'W

VOR or GPS RWY 32

KOKOMO MUNI (OKK)