

KOKOMO, INDIANA

AL-711 (FAA)

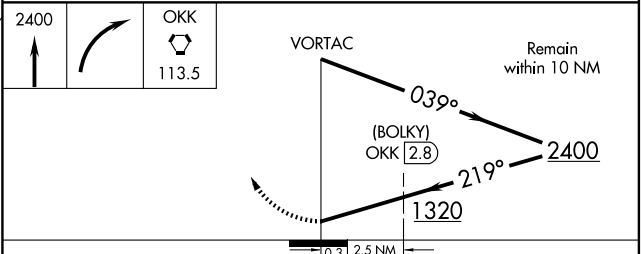
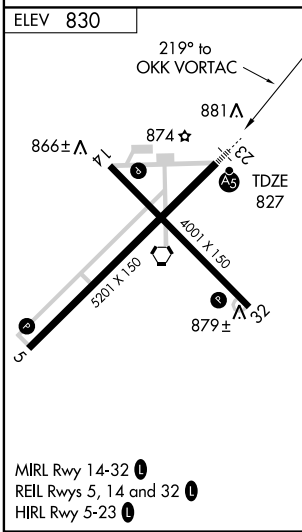
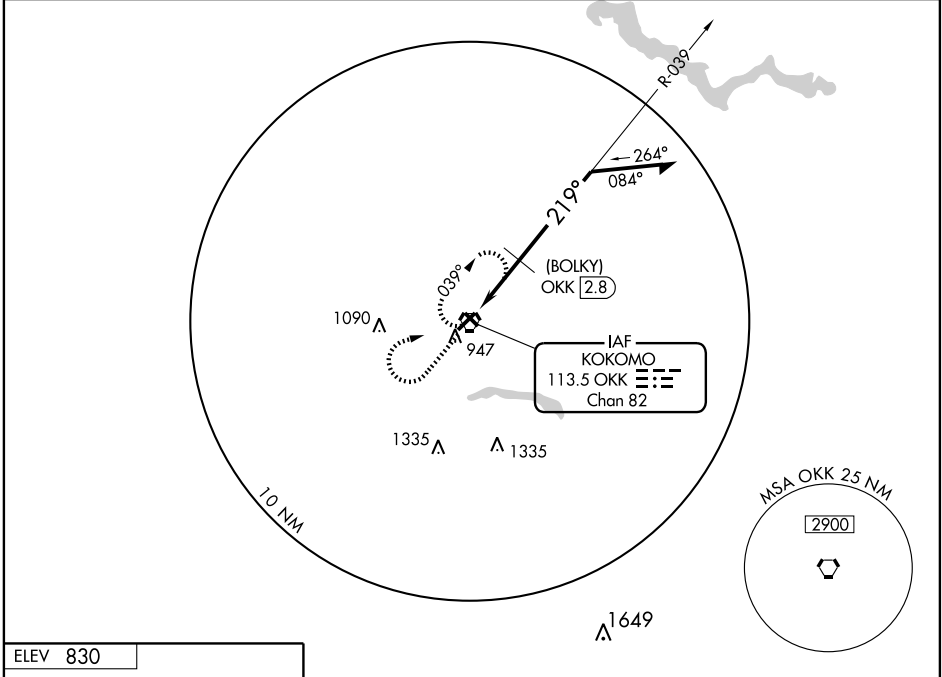
VORTAC OKK 113.5 Chan 82	APP CRS 219°	Rwy Idg TDZE Apt Elev	5201 827 830
--	------------------------	-----------------------------	---

VOR or GPS RWY 23

KOKOMO MUNI (OKK)

▲ Inoperative table does not apply. **MALSR** MISSED APPROACH: Climb to 2400 then right turn direct OKK VORTAC and hold.

AWOS-3 113.5	GRISSOM APP CON ★ 121.05 379.3	CLNC DEL 120.0	UNICOM 123.0 (CTAF) 0
------------------------	--	--------------------------	--



CATEGORY	A	B	C	D
S-23	1320-1	493 (500-1)	1320-1¼ 493 (500-1¼)	1320-1½ 493 (500-1½)
CIRCLING	1320-1	490 (500-1)	1320-1½ 490 (500-1½)	1380-2 550 (600-2)
DME MINIMUMS				
S-23	1220-1 393 (400-1)			1220-1¼ 393 (400-1¼)
CIRCLING	1260-1 430 (500-1)	1280-1 450 (500-1)	1280-1½ 450 (500-1½)	1380-2 550 (600-2)

KOKOMO, INDIANA
Amdt 19A 08157

40°32'N - 86°04'W

VOR or GPS RWY 23

KOKOMO MUNI (OKK)

EC-2, 22 OCT 2009 to 19 NOV 2009

EC-2, 22 OCT 2009 to 19 NOV 2009