

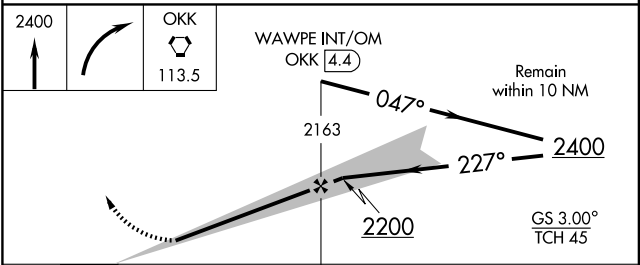
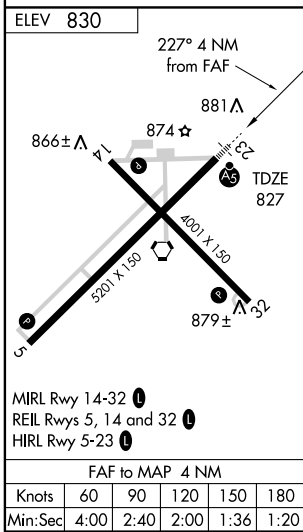
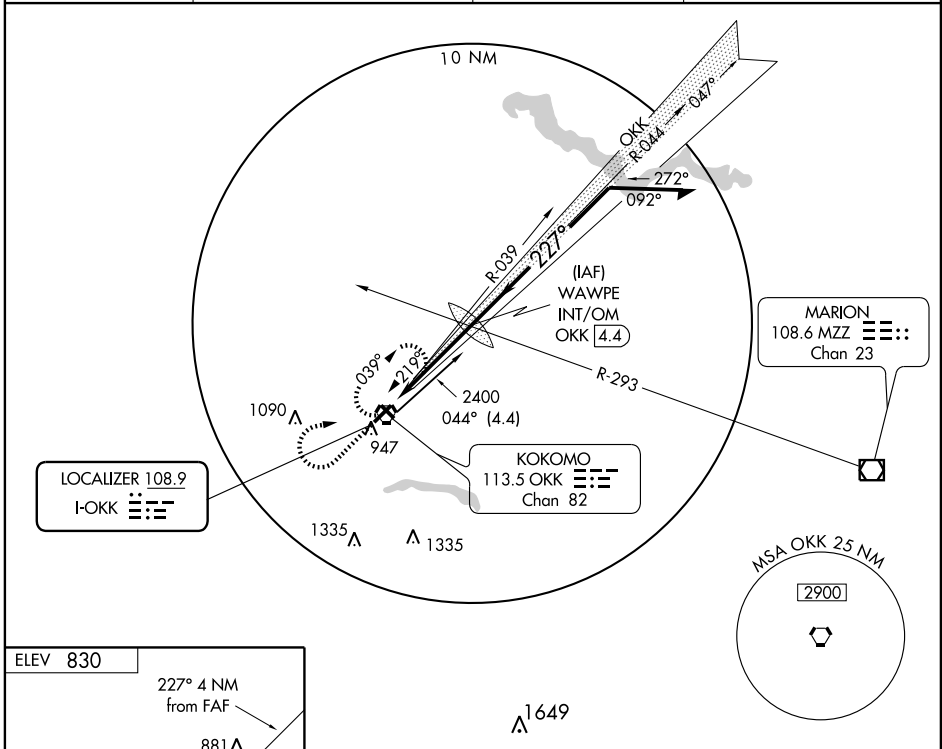
# ILS RWY 23

KOKOMO MUNI (OKK)

LOC I-OKK <b>108.9</b>	APP CRS <b>227°</b>	Rwy Idg <b>5201</b>
		TDZE <b>827</b>
		Apt Elev <b>830</b>

NA	MALSR	MISSED APPROACH: Climb to 2400, then right turn direct OKK VORTAC and hold.

AWOS-3 <b>113.5</b>	GRISSOM APP CON ★ <b>121.05 379.3</b>	CLNC DEL <b>120.0</b>	UNICOM <b>123.0</b> (CTAF)
------------------------	--	--------------------------	-------------------------------



CATEGORY	A	B	C	D
S-ILS 23	1027-½ 200 (200-½)			
S-LOC 23	1220-½ 393 (400-½)			1220-¾ 393 (400-¾)
CIRCLING	1260-1 430 (500-1)	1280-1 450 (500-1)	1280-1½ 450 (500-1½)	1380-2 550 (600-2)

EC-2, 22 OCT 2009 to 19 NOV 2009

EC-2, 22 OCT 2009 to 19 NOV 2009