

# GPS RWY 30

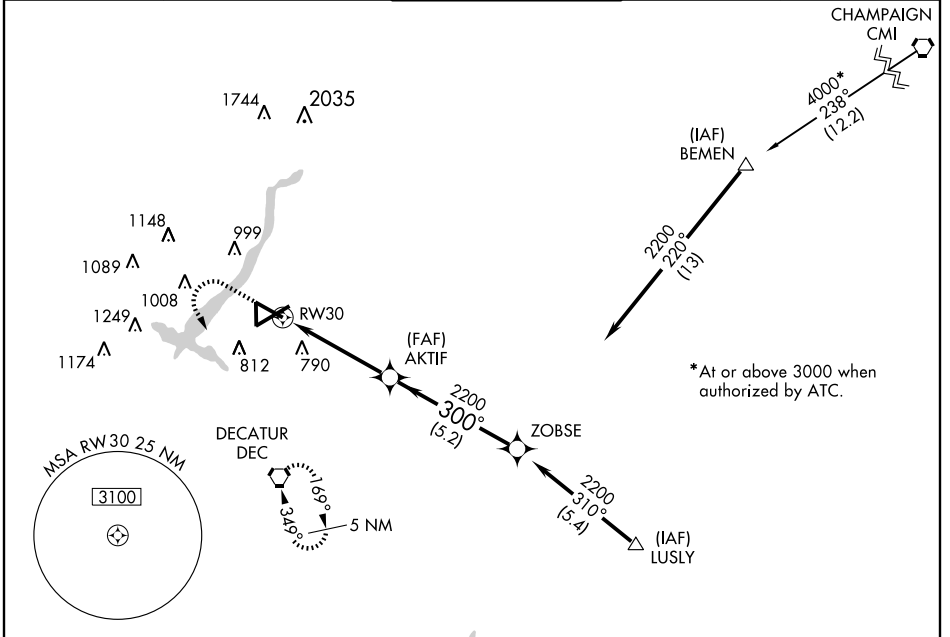
DECATUR (DEC)

APP CRS <b>300°</b>	Rwy Idg TDZE Apt Elev	<b>6799</b> <b>679</b> <b>682</b>
------------------------	-----------------------------	---

**▼**  
**▲** NA

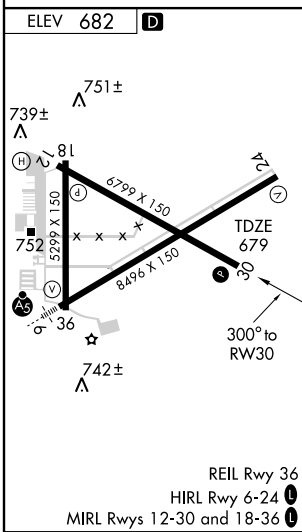
MISSED APPROACH: Climb to 1400 then climbing left turn to 3000 direct DEC VORTAC and hold.

ATIS <b>126.35</b>	CHAMPAIGN APP CON* <b>132.85 291.0</b>	DECATUR TOWER* <b>118.9 (CTAF) 0 392.1</b>	GND CON <b>121.75 392.1</b>	UNICOM <b>122.95</b>
-----------------------	---	---	--------------------------------	-------------------------



EC-3, 22 OCT 2009 to 19 NOV 2009

EC-3, 22 OCT 2009 to 19 NOV 2009



1400	3000	DEC		
		AKTIF	ZOBSE	
		2200	2200	
		300°	Procedure Turn NA	
		4.4 NM	5.2 NM	
CATEGORY	A	B	C	D
S-30	1040-1 361 (400-1)			1040-1¼ 361 (400-1¼)
CIRCLING	1120-1 438 (500-1)	1140-1 458 (500-1)	1240-1½ 558 (600-1½)	1300-2 618 (700-2)