

# RNAV (GPS) RWY 4

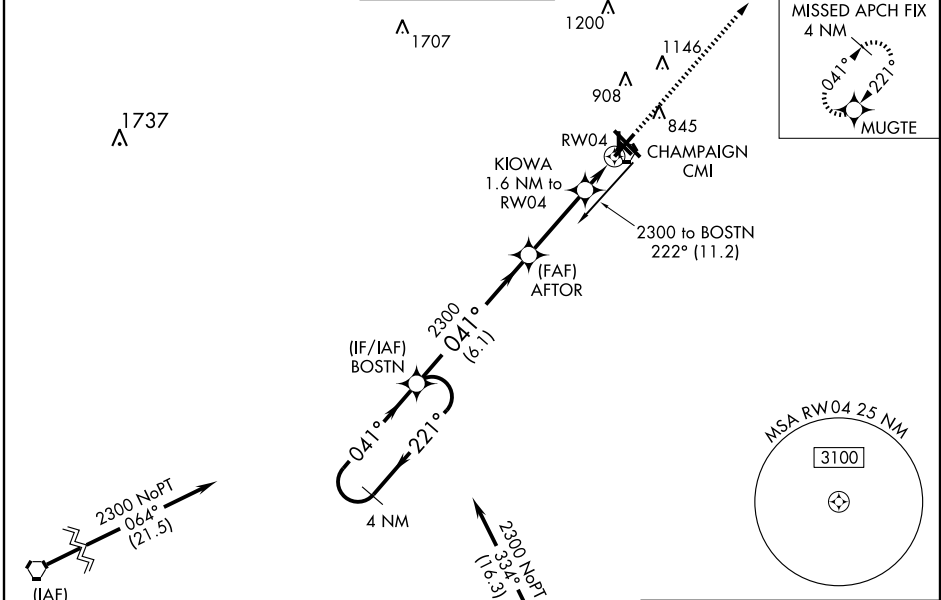
CHAMPAIGN-URBANA / UNIVERSITY OF ILLINOIS-WILLARD (CMI)

WAAS CH <b>58311</b> <b>W04A</b>	APP CRS <b>041°</b>	Rwy Idg TDZE Apt Elev	<b>6501</b> <b>751</b> <b>755</b>
--	------------------------	-----------------------------	---

**ASR** For uncompensated Baro-VNAV systems, LNAV/VNAV NA below -16° C (4° F) or above 47° C (116° F). DME/DME RNP-0.3 NA. When local altimeter setting not received, use Rantoul altimeter setting and increase all DA 41 feet, and all MDA 60 feet. Increase LNAV Cat. D visibility ¼ mile. VDP and Baro-VNAV NA when using Rantoul altimeter setting.

MISSED APPROACH: Climb to 2800 direct MUGTE and hold.

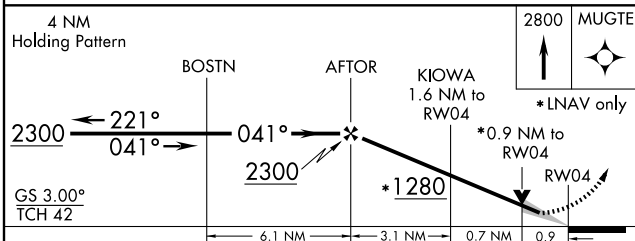
ATIS <b>124.85</b>	CHAMPAIGN APP CON* <b>121.35 285.65</b> (316° -135°) <b>132.85 291.0</b> (136° -315°)	CHAMPAIGN TOWER* <b>120.4</b> (CTAF) <b>0 229.4</b>	GND CON <b>121.8</b>	CLNC DEL <b>128.75</b>	UNICOM <b>122.95</b>
-----------------------	---	--	-------------------------	---------------------------	-------------------------



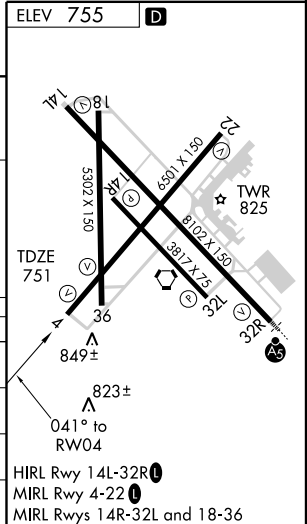
EC-3, 22 OCT 2009 to 19 NOV 2009

EC-3, 22 OCT 2009 to 19 NOV 2009

Procedure NA for arrivals on DEC VORTAC airway radials 002 CW 029.



CATEGORY	A	B	C	D
LPV DA	1001-1		250 (300-1)	
LNAV/ VNAV DA	1083-1¼		332 (400-1¼)	
LNAV MDA	1080-1		329 (400-1)	
CIRCLING	1160-1 405 (500-1)	1220-1 465 (500-1)	1220-1½ 465 (500-1½)	1320-2 565 (600-2)



# RNAV (GPS) RWY 4