

# RNAV (GPS) RWY 32R

CHAMPAIGN-URBANA / UNIVERSITY OF ILLINOIS-WILLARD (CMI)

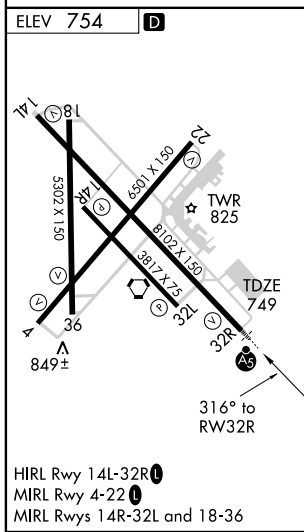
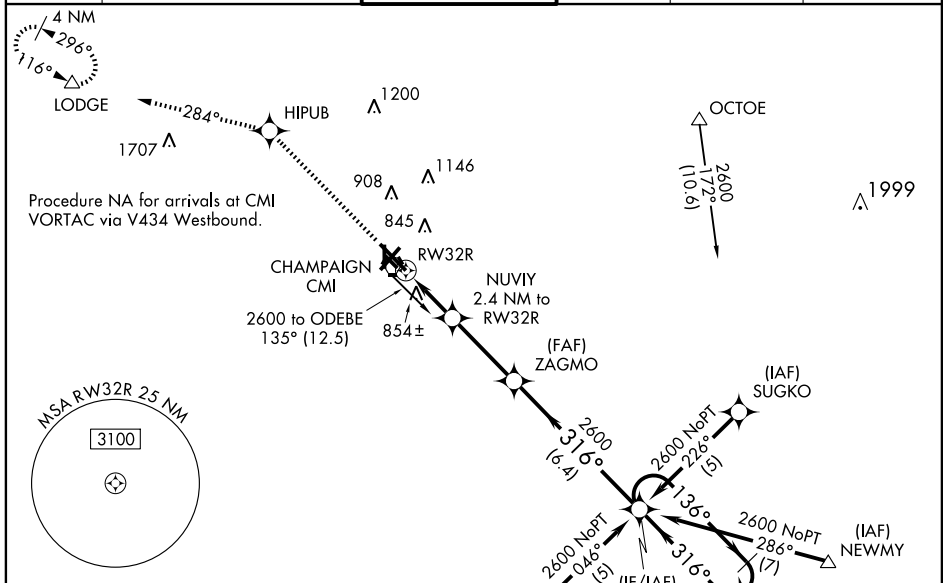
WAAS CH <b>61110</b> <b>W32A</b>	APP CRS <b>316°</b>	Rwy Idg TDZE <b>8102</b> <b>749</b> Apt Elev <b>754</b>
--	------------------------	--

For uncompensated Baro-VNAV systems, LNAV/VNAV NA below -1° C (4° F) or above 47° C (116° F). DME/DME RNP-0.3 NA. Baro-VNAV and VDP NA when using Rantoul altimeter setting. When local altimeter setting not received, use Rantoul altimeter setting and increase all DA 41 feet, all MDA 60 feet, increase LNAV Cat. C visibility to RVR 4000. For inoperative MALSRS, increase LNAV Cat. D visibility to RVR 6000.

**MALSRS**

**MISSED APPROACH:**  
Climb to 2800 direct  
HIPUB and via 284°  
track to LODGE  
and hold.

ATIS <b>124.85</b>	CHAMPAIGN APP CON * <b>121.35 285.65</b> (316° -135°) <b>132.85 291.0</b> (136° -315°)	CHAMPAIGN TOWER * <b>120.4</b> (CTAF) <b>0 229.4</b>	GND CON <b>121.8</b>	CLNC DEL <b>128.75</b>	UNICOM <b>122.95</b>
-----------------------	--	---	-------------------------	---------------------------	-------------------------



2800	HIPUB	LODGE	VGSI and RNAV glidepath not coincident.	
↑	✧	TRK 284°	ZAGMO	ODEBE 4 NM Holding Pattern
*LNAV only.		NUVIY 2.4 NM to RWY 32R	136° → 2600	
*1 NM to RWY 32R			← 316° 2600	
RWY 32R		*1560	GS 3.00° TCH 52	
→ 1 NM		1.4 NM	3.2 NM	6.4 NM
CATEGORY	A	B	C	D
LPV DA	999/24 250 (300-½)			
LNAV/VNAV DA	1153/50 404 (400-1)			
LNAV MDA	1120/24 371 (400-½)			1120/50 371 (400-1)
CIRCLING	1160-1 406 (500-1)	1220-1 466 (500-1)	1220-1½ 466 (500-1½)	1320-2 566 (600-2)

# RNAV (GPS) RWY 32R

EC-3, 22 OCT 2009 to 19 NOV 2009

EC-3, 22 OCT 2009 to 19 NOV 2009