

VORTAC YRK <b>112.8</b> Chan <b>75</b>	APP CRS <b>033°</b>	Rwy Idg TDZE Apt Elev <b>663</b>	<b>N/A</b> <b>N/A</b> <b>663</b>
--	------------------------	---	--

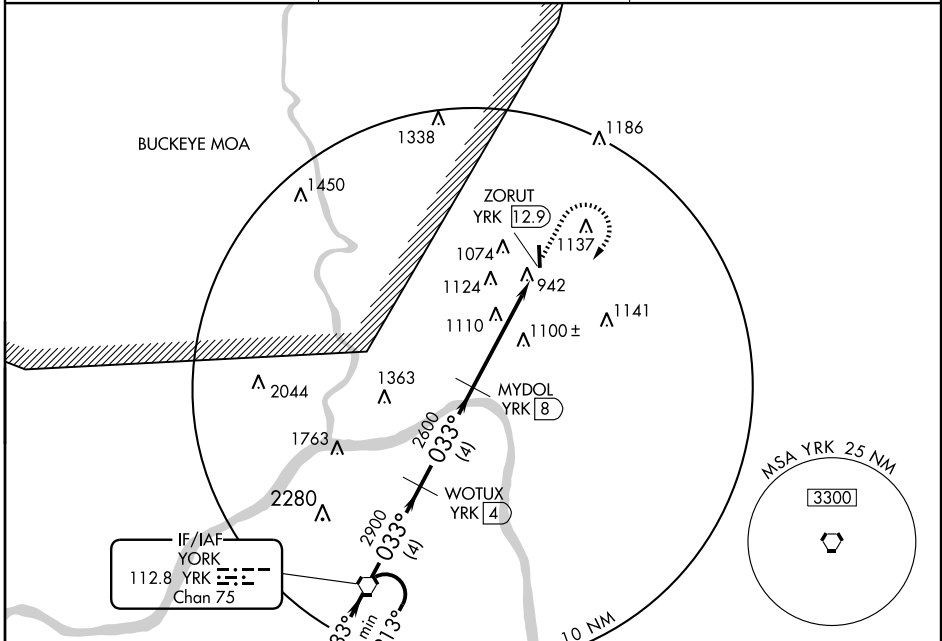
# VOR/DME-A

PORTSMOUTH/GREATER PORTSMOUTH RGNL (PMH)

**▼** When local altimeter setting not received, use Huntington altimeter setting and increase all MDA 100 feet and increase  
**▲ NA** Cat B, D visibility ¼ mile, Cat C visibility ½ mile.

MISSED APPROACH: Climb to 3000 then climbing right turn to 3300 direct YRK VORTAC and hold.

AWOS-3 <b>125.175</b>	HUNTINGTON APP CON <b>128.4 270.1</b>	UNICOM <b>122.8 (CTAF) 0</b>
--------------------------	--	---------------------------------

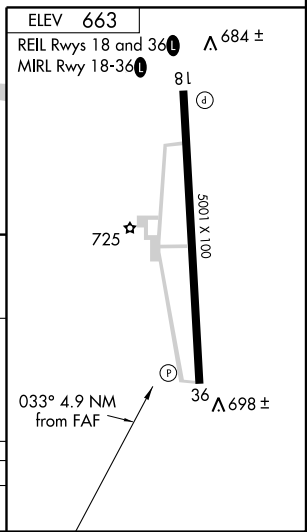
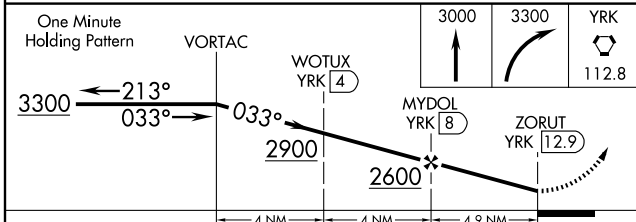


EC-2, 22 OCT 2009 to 19 NOV 2009

EC-2, 22 OCT 2009 to 19 NOV 2009

IF/IAF  
YORK  
112.8 YRK  
Chan 75

NoPT for arrivals on YRK VORTAC  
airway radials 246 CW 291.



CATEGORY	A	B	C	D
CIRCLING	1380-1	717 (800-1)	1380-2	1440-2½
			717 (800-2)	777 (800-2½)