

VOR RWY 5

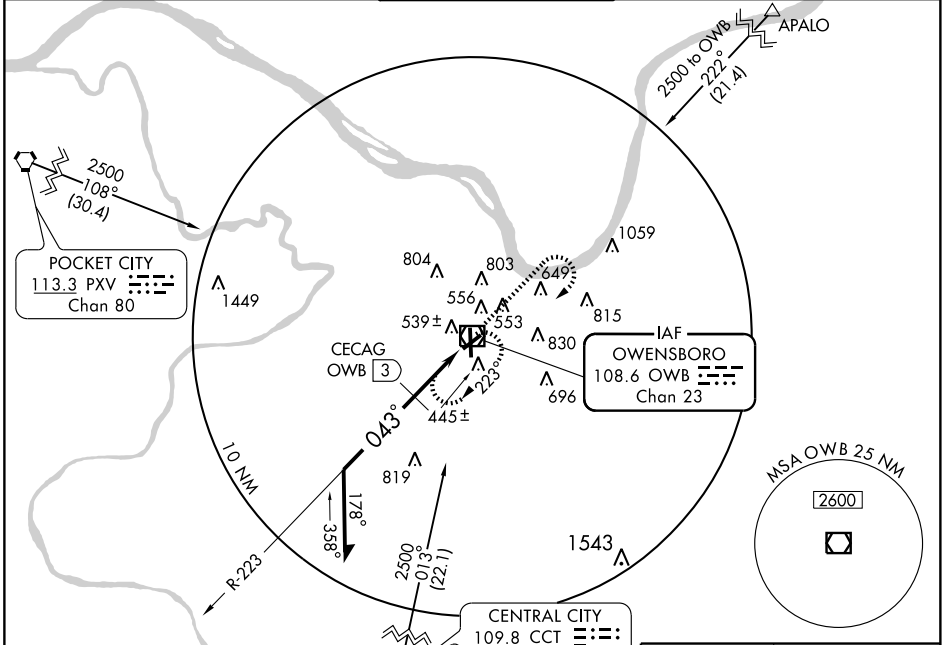
OWENSBORO-DAVIESS COUNTY (OWB)

VOR/DME OWB 108.6 Chan 23	APP CRS 043°	Rwy Idg TDZE Apt Elev	5000 405 406
---	------------------------	-----------------------------	---

▼ When control tower closed, use Evansville altimeter setting and increase all MDAs 60 feet and visibility Cats. C and D $\frac{1}{4}$ mile.

MISSED APPROACH: Climb to 1500, then climbing right turn to 2500 direct OWB VOR/DME and hold.

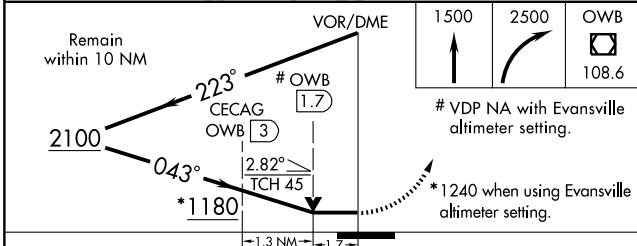
ASOS 124.325	EVANSVILLE APP CON* 126.4 226.4	OWENSBORO TOWER* 120.7 (CTAF) 251.15	GND CON 121.7	UNICOM 122.95
------------------------	---	--	-------------------------	-------------------------



SE-1, 22 OCT 2009 to 19 NOV 2009

SE-1, 22 OCT 2009 to 19 NOV 2009

ELEV 406	D
----------	----------



CATEGORY	A	B	C	D
S-5	1180-1 775 (800-1)	1180-1¼ 775 (800-1¼)	1180-2¼ 775 (800-2¼)	1180-2½ 775 (800-2½)
CIRCLING	1180-1 774 (800-1)	1180-1¼ 774 (800-1¼)	1180-2¼ 774 (800-2¼)	1180-2½ 774 (800-2½)
CECAG FIX MINIMUMS				
S-5	820-1	415 (500-1)	820-1¼	415 (500-1¼)
CIRCLING	860-1	454 (500-1)	1120-2 714 (800-2)	1140-2¼ 734 (800-2¼)

