


VOR RWY 36

OWENSBORO-DAVIESS COUNTY (OWB)

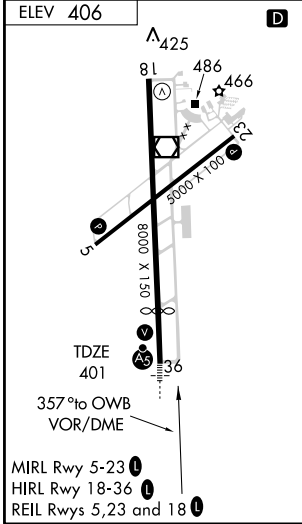
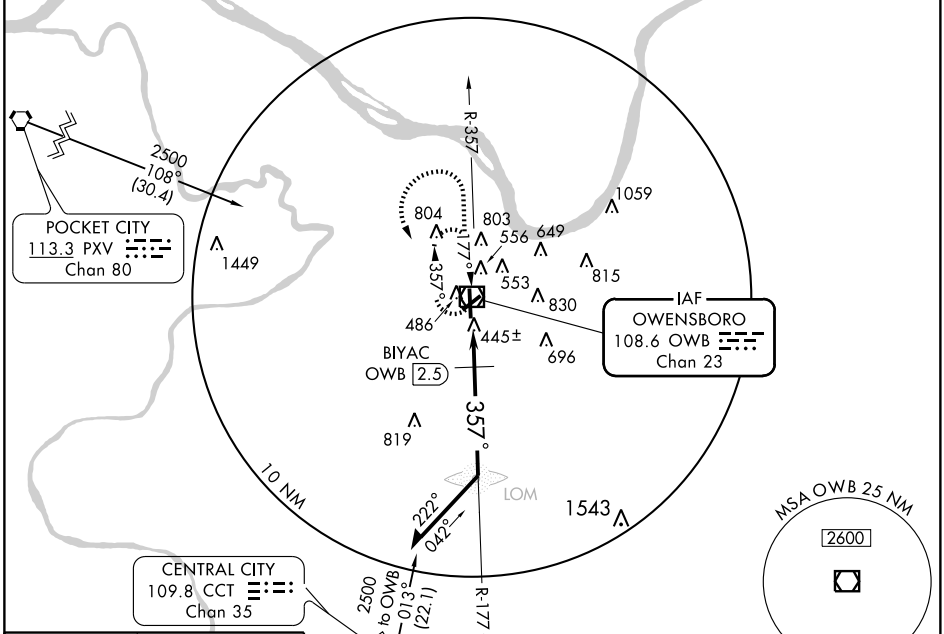
VOR/DME OWB 108.6 Chan 23	APP CRS 357°	Rwy Idg TDZE Apt Elev	6500 400 406
--	------------------------	-----------------------------	---

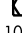
⚠ When control tower closed, use Evansville altimeter setting and increase all MDAs 60 feet and all visibility 1/2 mile. For inoperative MALSR, increase S-36 BIYAC FIX minimums Cat. D visibility to 1/4.

MALSR 

MISSED APPROACH: Climb to 2500 then left turn direct OWB VOR/DME and hold.

ASOS 124.325	EVANSVILLE APP CON * 126.4 226.4	OWENSBORO TOWER * 120.7 (CTAF) 251.15	GND CON 121.7	UNICOM 122.95
------------------------	--	---	-------------------------	-------------------------



2500	OWB 	VOR/DME	Remain within 10 NM
# VDP NA with Evansville altimeter setting.	# OWB [1.8]	BIYAC OWB [2.5]	177°
1040 when using Evansville altimeter setting.	2100	980	357°
	2.83°	TCH 56	
	1.8	0.7 NM	

CATEGORY	A	B	C	D
S-36	980-1/2	580 (600-1/2)	980-1	980-1 1/4
CIRCLING	980-1	574 (600-1)	1120-2	1140-2 1/4
			714 (800-2)	734 (800-2 1/4)
BIYAC FIX MINIMUMS				
S-36	780-1/2	380 (400-1/2)		780-1
CIRCLING	860-1	454 (500-1)	1120-2	1140-2 1/4
			714 (800-2)	734 (800-2 1/4)

SE-1, 22 OCT 2009 to 19 NOV 2009

SE-1, 22 OCT 2009 to 19 NOV 2009