

RNAV (GPS) RWY 5

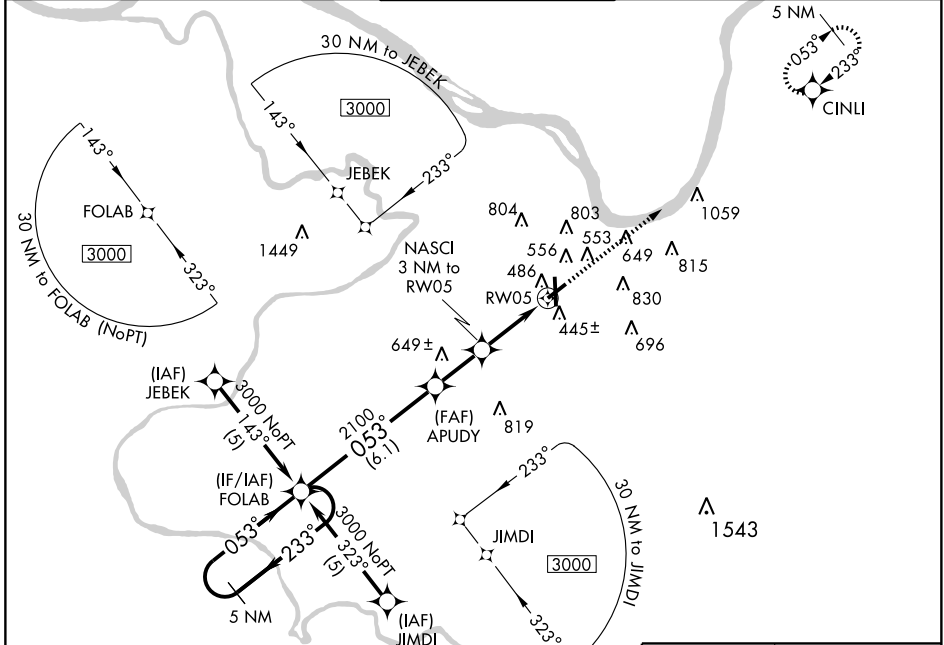
OWENSBORO-DAVIESS COUNTY (OWB)

APP CRS	Rwy Idg	5000
053°	TDZE	405
	Apt Elev	406

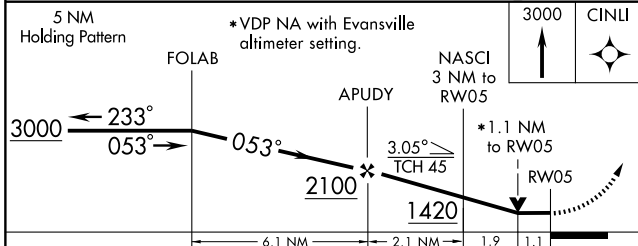
NA When control tower closed, use Evansville altimeter setting.
GPS or RNP-0.3 Required.
DME/DME RNP-0.3 NA.

MISSED APPROACH: Climb to 3000 direct CINLI WP and hold.

ASOS 124.325	EVANSVILLE APP CON* 126.4 226.4	OWENSBORO TOWER* 120.7 (CTAF) 251.15	GND CON 121.7	UNICOM 122.95
------------------------	---	--	-------------------------	-------------------------



SE-1, 22 OCT 2009 to 19 NOV 2009



CATEGORY	A	B	C	D
RNAV MDA	800-1	395 (400-1)		800-1¼ 395 (400-1¼)
CIRCLING	860-1	454 (500-1)	1120-2 714 (800-2)	1140-2¼ 734 (800-2¼)
EVANSVILLE ALTIMETER SETTING MINIMUMS				
RNAV MDA	860-1	455 (500-1)	860-1¼ 455 (500-1¼)	860-1½ 455 (500-1½)
CIRCLING	920-1	514 (600-1)	1180-2¼ 774 (800-2¼)	1200-2½ 794 (800-2½)

