

RNAV (GPS) RWY 36

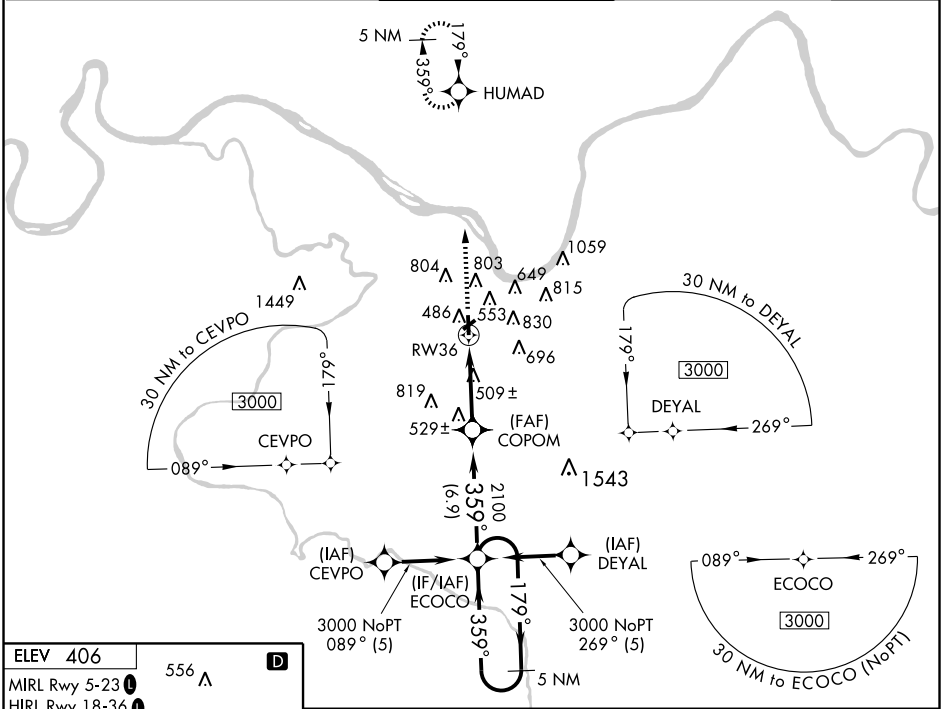
OWENSBORO-DAVIESS COUNTY (OWB)

WAAS CH 45508 W36A	APP CRS 359°	Rwy Idg TDZE 400 Apt Elev 406	6500
----------------------------------------	------------------------	---------------------------------------------------	-------------

Baro-VNAV NA below -15°C (5°F). DME/DME RNP-0.3 NA. When control tower closed, use Evansville altimeter setting, and increase all DAs/MDAs 60 feet and all visibilities ¼ mile. Baro-VNAV and VDP NA with Evansville altimeter setting. For inoperative MALSR, increase LPV all Cats visibility to 1 and LNAV Cat D visibility to 1¼.

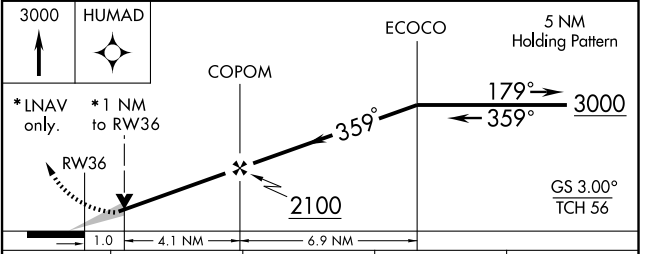
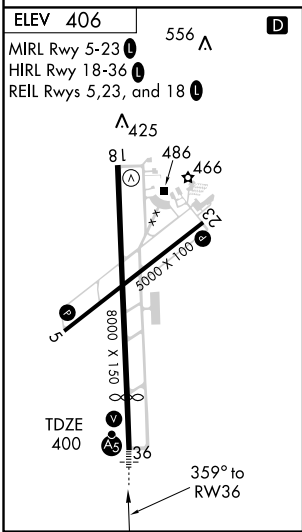
MALSR
MISSED APPROACH: Climb to 3000 direct HUMAD and hold.

ASOS 124.325	EVANSVILLE APP CON * 126.4 226.4	OWENSBORO TOWER * 120.7 (CTAF) 251.15	GND CON 121.7	UNICOM 122.95
------------------------	--------------------------------------------	-------------------------------------------------	-------------------------	-------------------------



SE-1, 22 OCT 2009 to 19 NOV 2009

SE-1, 22 OCT 2009 to 19 NOV 2009



CATEGORY	A	B	C	D
LPV DA		650-½	250 (300-½)	
LNAV/VNAV DA		820-1	420 (500-1)	
LNAV MDA		760-½	360 (400-½)	760-1 360 (400-1)
CIRCLING	860-1½	454 (500-1½)	1120-2 714 (800-2)	1140-2¼ 734 (800-2¼)