

OWENSBORO, KENTUCKY

AL-707 (FAA)

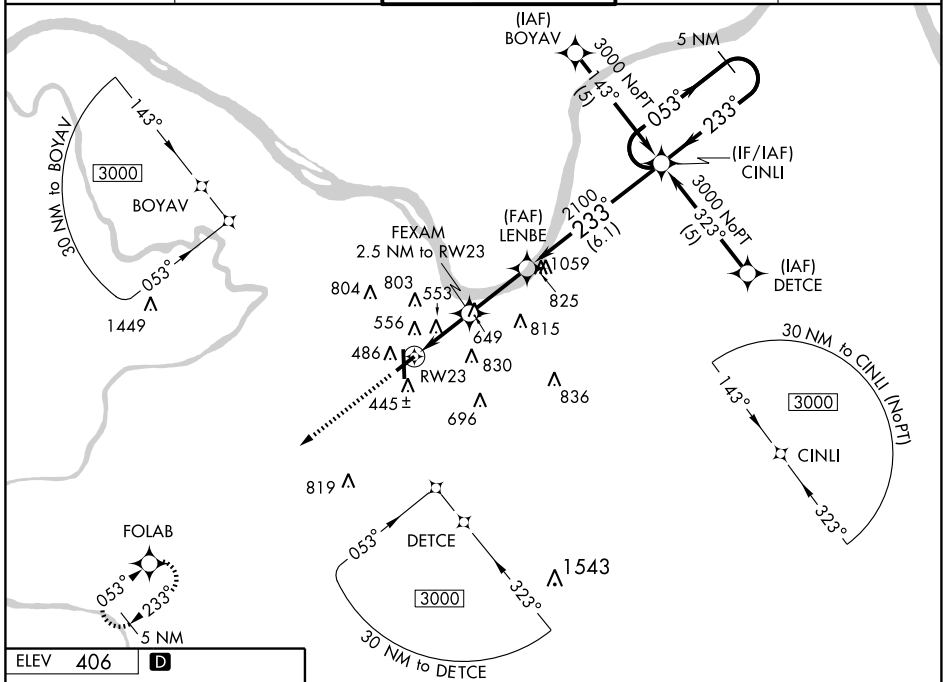
APP CRS <b>233°</b>	Rwy Idg <b>5000</b>
	TDZE <b>403</b>
	Apt Elev <b>406</b>

# RNAV (GPS) RWY 23

OWENSBORO-DAVIESS COUNTY (OWB)

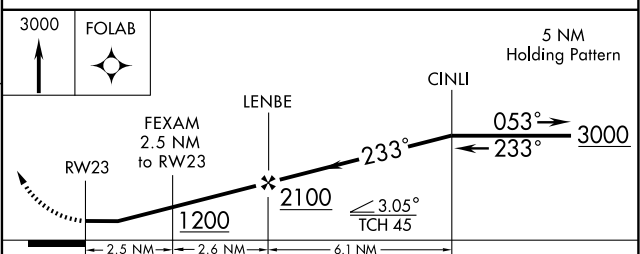
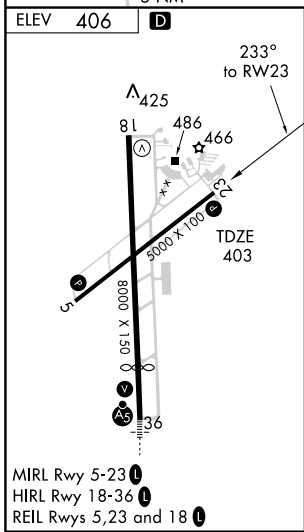
<p><b>▼</b> When control tower closed, use Evansville altimeter setting.  <b>▲ NA</b> GPS or RNP-0.3 Required.          DME/DME RNP-0.3 NA.</p>	<p>MISSED APPROACH: Climb to 3000          direct FOLAB WP and hold.</p>
---	--

ASOS <b>124.325</b>	EVANSVILLE APP CON* <b>126.4 226.4</b>	OWENSBORO TOWER* <b>120.7 (CTAF) 0 251.15</b>	GND CON <b>121.7</b>	UNICOM <b>122.95</b>
------------------------	---	--	-------------------------	-------------------------



SE-1, 22 OCT 2009 to 19 NOV 2009

SE-1, 22 OCT 2009 to 19 NOV 2009



CATEGORY	A	B	C	D
LNAV MDA	820-1	417 (500-1)	820-1¼	417 (500-1¼)
CIRCLING	860-1	454 (500-1)	1120-2 714 (800-2)	1140-2¼ 734 (800-2¼)
EVANSVILLE ALTIMETER SETTING MINIMUMS				
LNAV MDA	880-1	477 (500-1)	880-1¼ 477 (500-1¼)	880-1½ 477 (500-1½)
CIRCLING	920-1	514 (600-1)	1180-2¼ 774 (800-2¼)	1200-2½ 794 (800-2½)

OWENSBORO, KENTUCKY  
 Orig 09183

37°44'N-87°10'W

# OWENSBORO-DAVIESS COUNTY (OWB) RNAV (GPS) RWY 23