

ILS or LOC RWY 36

OWENSBORO-DAVISS COUNTY (OWB)

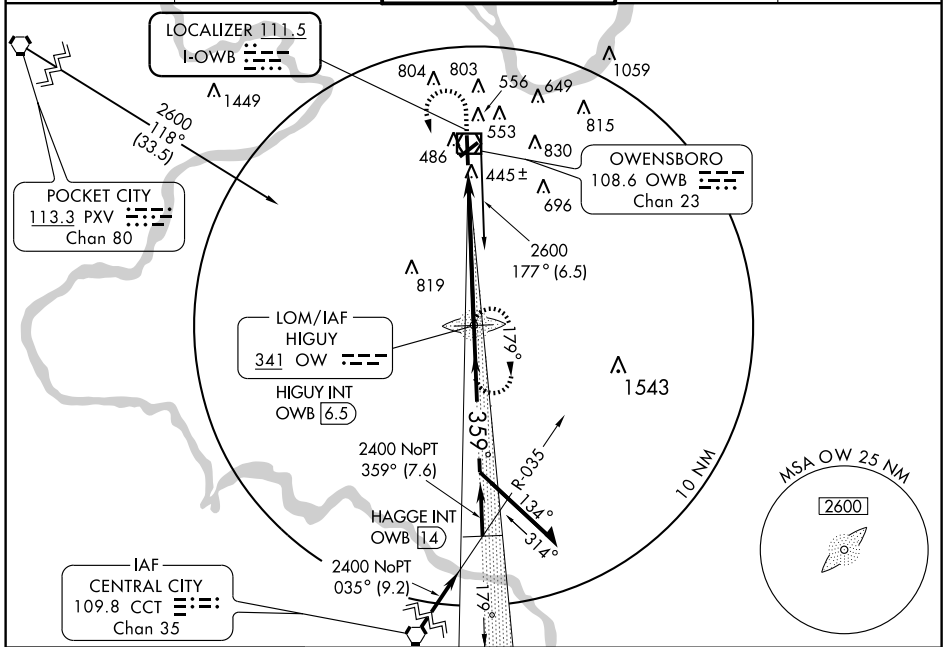
LOC I-OWB 111.5	APP CRS 359°	Rwy Idg TDZE Apt Elev	6500 400 406
---------------------------	------------------------	-----------------------------	---

When control tower closed, use Evansville altimeter setting.
ADF REQUIRED.



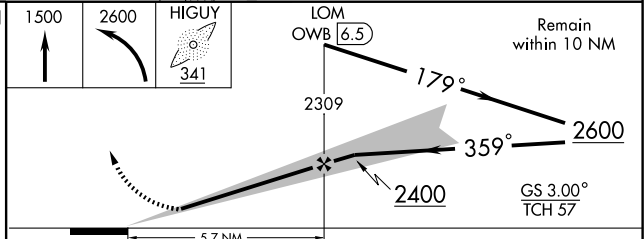
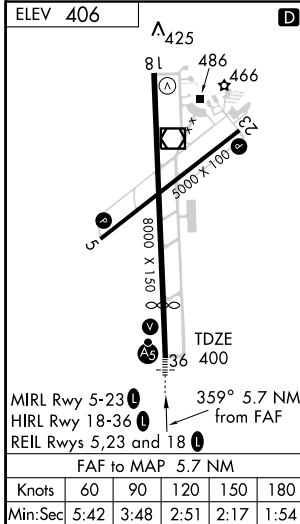
MISSED APPROACH: Climb to 1500 then climbing left turn to 2600 direct HIGUY LOM and hold.

ASOS 124.325	EVANSVILLE APP CON* 126.4 226.4	OWENSBORO TOWER* 120.7 (CTAF) 251.15	GND CON 121.7	UNICOM 122.95
------------------------	---	--	-------------------------	-------------------------



SE-1, 22 OCT 2009 to 19 NOV 2009

SE-1, 22 OCT 2009 to 19 NOV 2009



CATEGORY	A	B	C	D
S-ILS 36	600-1/2 200 (200-1/2)			
S-LOC 36	780-1/2 380 (400-1/2)		780-3/4 380 (400-3/4)	
CIRCLING	860-1	454 (500-1)	1120-2 714 (800-2)	1140-2 1/4 734 (800-2 1/4)
EVANSVILLE ALTIMETER SETTING MINIMUMS				
S-ILS 36	659-1/2 259 (300-1/2)			
S-LOC 36	840-1/2	440 (500-1/2)	840-3/4 440 (500-3/4)	840-1 440 (500-1)
CIRCLING	920-1	514 (600-1)	1180-2 1/4 774 (800-2 1/4)	1200-2 1/2 794 (800-2 1/2)