

HICKORY, NORTH CAROLINA

AL-706 (FAA)

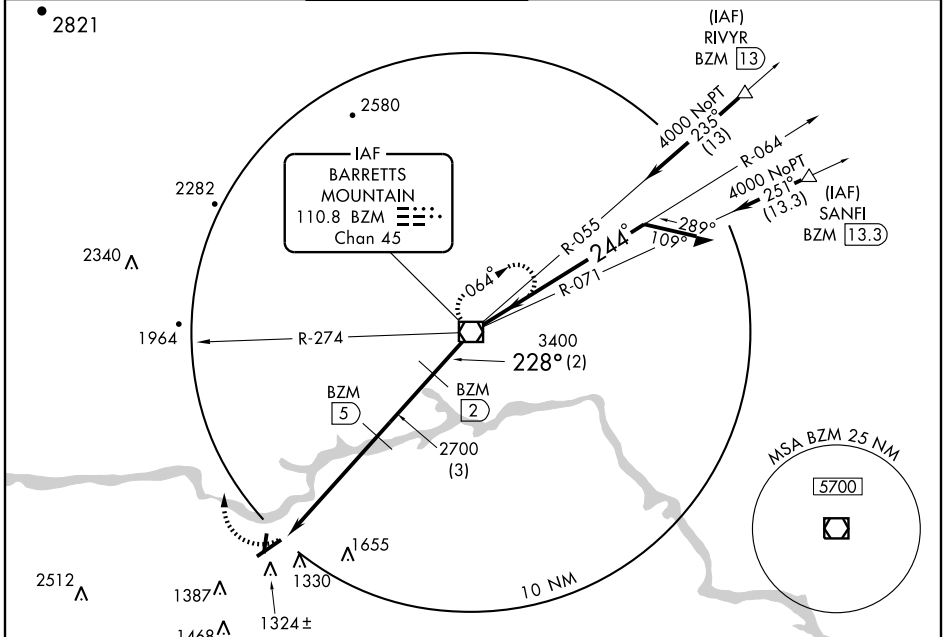
VOR/DME RWY 24

HICKORY RGNL (HKY)

VOR/DME BZM 110.8 Chan 45	APP CRS 228°	Rwy Idg TDZE 1189 Apt Elev 1189
---	------------------------	---

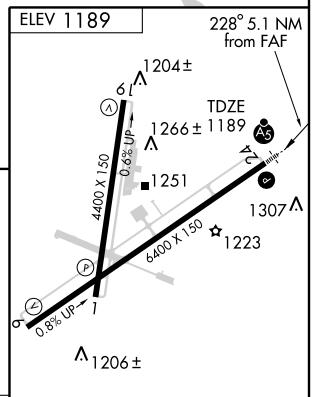
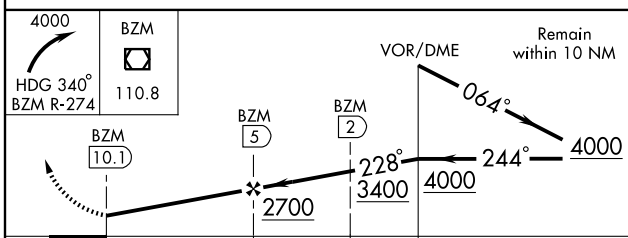
Inoperative table does not apply.	MALSR	MISSED APPROACH: Climbing right turn to 4000 via heading 340° and BZM R-274 to BZM VOR/DME and hold.
		ASOS 118.325

ATLANTA CENTER 125.15 263.0	HICKORY TOWER ★ 128.15 (CTAF) 0	ATLANTA CLNC DEL 124.25 (when tower closed)	GND CON 121.7	CLNC DEL 121.7
---------------------------------------	---	--	-------------------------	--------------------------



SE-2, 22 OCT 2009 to 19 NOV 2009

SE-2, 22 OCT 2009 to 19 NOV 2009



CATEGORY	A	B	C	D
S-24	1560-1	371 (400-1)		1560-1¼ 371 (400-1¼)
CIRCLING	1640-1	451 (500-1)	1640-1½ 451 (500-1½)	1740-2 551 (600-2)

HIRL Rwy 6-24 0
MIRL Rwy 1-19 0
REIL Rwy 1 0
REIL Rws 6 and 19

HICKORY, NORTH CAROLINA
Orig-A 08101

35°44'N-81°23'W

HICKORY RGNL (HKY) VOR/DME RWY 24