


# RNAV (GPS) RWY 24

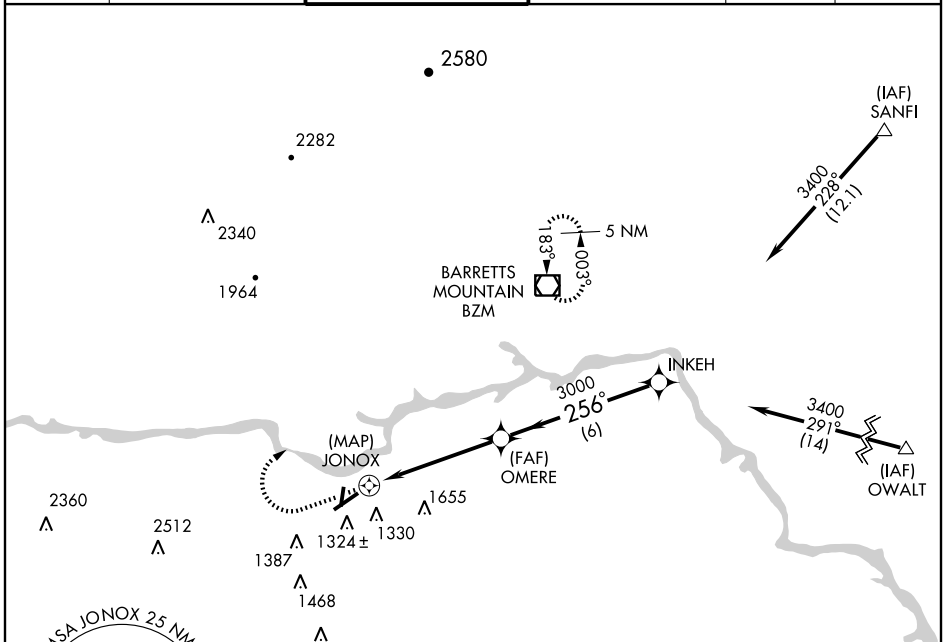
HICKORY RGNL (HKY)

APP CRS <b>256°</b>	Rwy Idg <b>6400</b>
	TDZE <b>1189</b>
	Apt Elev <b>1189</b>

**GPS or RNP-0.3 Required. DME/DME RNP-0.3 NA.**  
**For inoperative MALS, increase LNAV Cat. D visibility to 1¼ mile.**

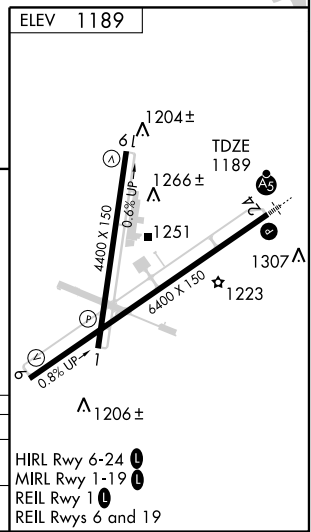
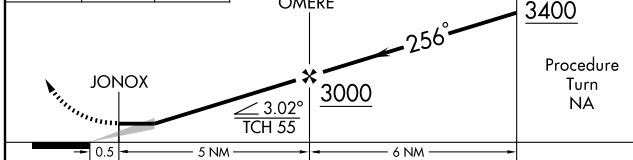
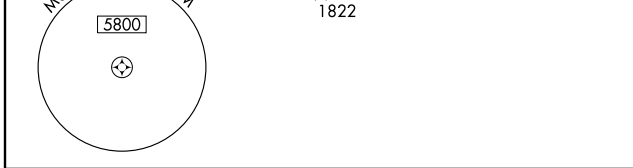
**MALS**  MISSED APPROACH: Climb to 2000 then climbing right turn to 4000 direct BZM VOR/DME and hold.

ASOS <b>118.325</b>	ATLANTA CENTER <b>125.15 263.0</b>	HICKORY TOWER ★ <b>128.15 (CTAF) 0</b>	ATLANTA CLNC DEL <b>124.25</b> (when tower closed)	GND CON <b>121.7</b>	CLNC DEL <b>121.7</b>
------------------------	---------------------------------------	---	--	-------------------------	--------------------------






SE-2, 22 OCT 2009 to 19 NOV 2009

SE-2, 22 OCT 2009 to 19 NOV 2009



CATEGORY	A	B	C	D
LNAV MDA	1560-½ 371 (400-½)			1560-1 371 (400-1)
CIRCLING	1640-1	451 (500-1)	1640-1½ 451 (500-1½)	1740-2 551 (600-2)

HIRL Rwy 6-24   
 MRL Rwy 1-19   
 REIL Rwy 1   
 REIL Rws 6 and 19