

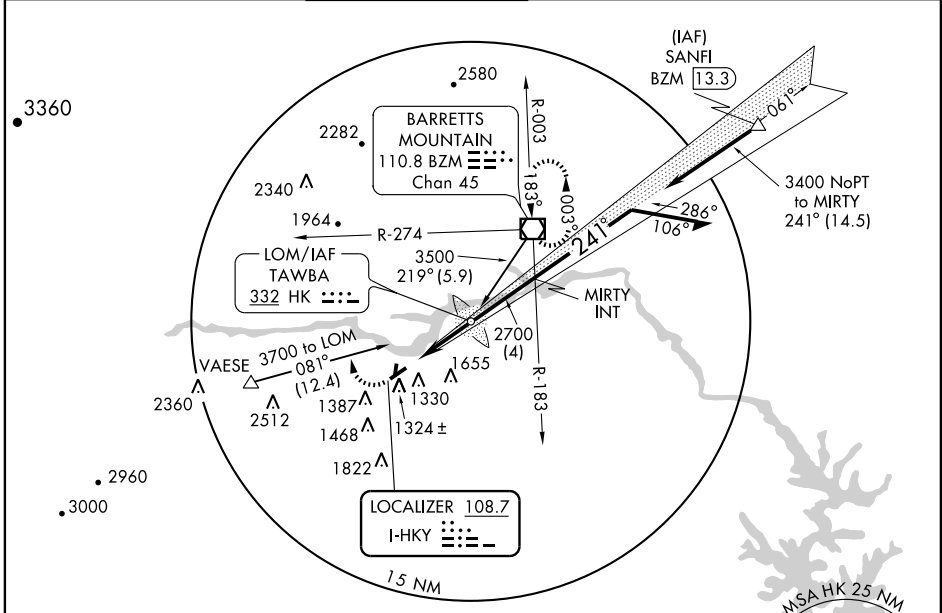
ILS or LOC RWY 24

HICKORY RGNL (HKY)

LOC I-HKY 108.7	APP CRS 241°	Rwy Idg TDZE Apt Elev	6400 1189 1189
---------------------------	------------------------	-----------------------------	---

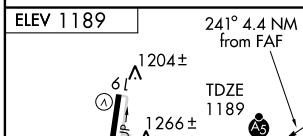
	MISSED APPROACH: Climb to 1600 then climbing right turn to 4000 via heading 340° and BZM R-274 to BZM VOR/DME and hold.

ASOS 118.325	ATLANTA CENTER 125.15 263.0	HICKORY TOWER ★ 128.15 (CTAF) 0	ATLANTA CLNC DEL 124.25 (when tower closed)	GND CON 121.7	CLNC DEL 121.7
------------------------	---------------------------------------	---	--	-------------------------	--------------------------

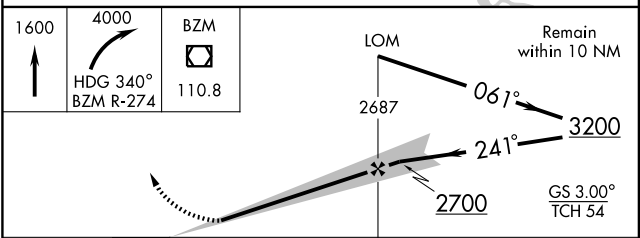


SE-2, 22 OCT 2009 to 19 NOV 2009

SE-2, 22 OCT 2009 to 19 NOV 2009



ELEV 1189	241° 4.4 NM from FAF
1204±	1266±
1251	1307±
1206±	1223
HIRL Rwy 6-24 (L) MIRL Rwy 1-19 (L) REIL Rwy 1 (L) REIL Rwy 6 and 19 (L)	
FAF to MAP 4.4 NM	
Knots	60 90 120 150 180
Min:Sec	4:24 2:56 2:12 1:46 1:28



CATEGORY	A	B	C	D
S-ILS 24	1389-½		200 (200-½)	
S-LOC 24	1560-½		371 (400-½)	
			1560-¾ 371 (400-¾)	
CIRCLING	1640-1 451 (500-1)		1640-1½ 451 (500-1½)	
			1740-2 551 (600-2)	