

BROWNWOOD, TEXAS

AL-705 (FAA)

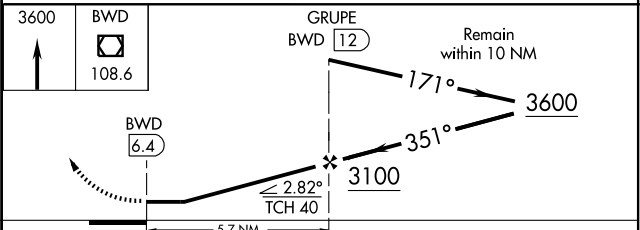
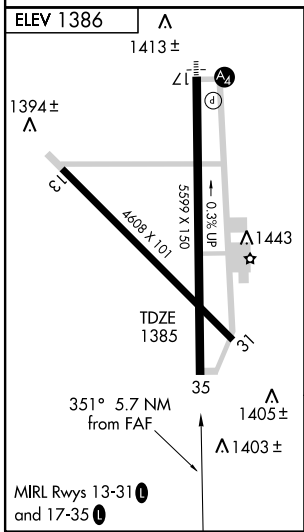
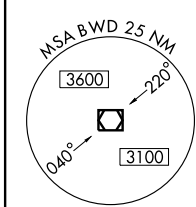
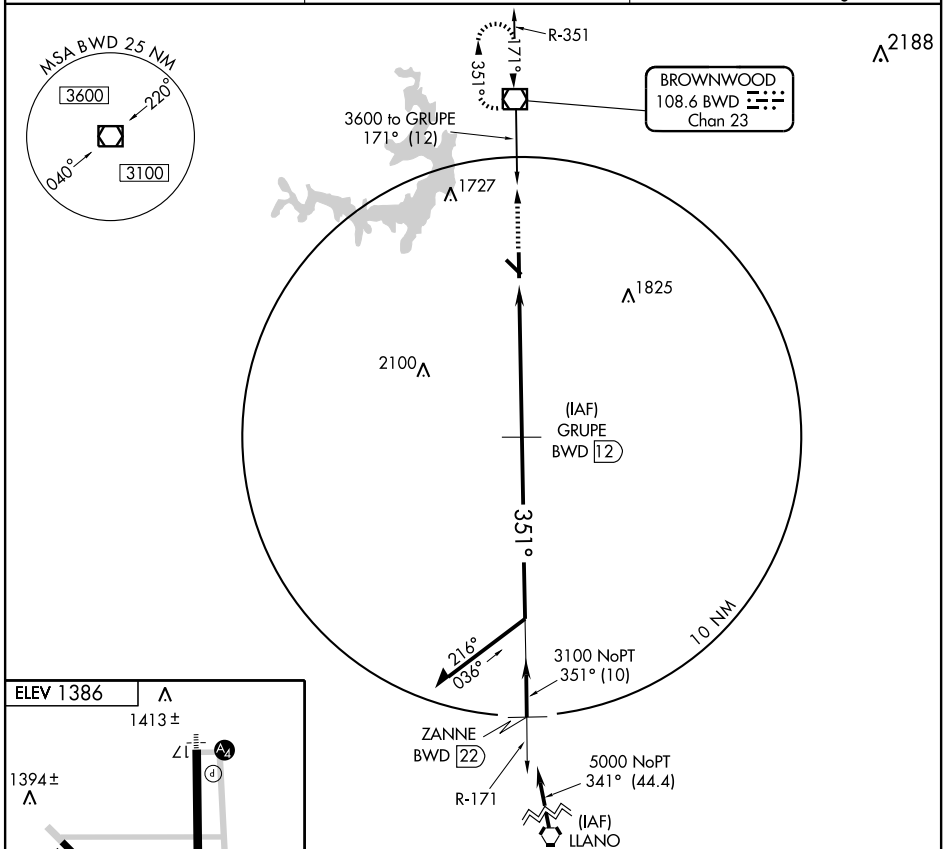
VOR/DME BWD 108.6 Chan 23	APP CRS 351°	Rwy Idg TDZE Apt Elev	5599 1385 1386
---	------------------------	-----------------------------	---

VOR/DME RWY 35

BROWNWOOD RGNL (BWD)

▲ NA MISSED APPROACH: Climb to 3600 direct BWD VOR/DME and hold.

AWOS-3 118.325	FORT WORTH CENTER 127.45 290.3	UNICOM 122.8 (CTAF) 0
--------------------------	--	--



CATEGORY	A	B	C	D
S-35	1880-1	495 (500-1)	1880-1¼ 495 (500-1¼)	1880-1½ 495 (500-1½)
CIRCLING	1880-1	494 (500-1)	1880-1½	1940-2 554 (600-2)

BROWNWOOD, TEXAS
Amdt 1B 09295

31° 48' N - 98° 57' W

BROWNWOOD RGNL (BWD) VOR/DME RWY 35

SC-3, 22 OCT 2009 to 19 NOV 2009

SC-3, 22 OCT 2009 to 19 NOV 2009