

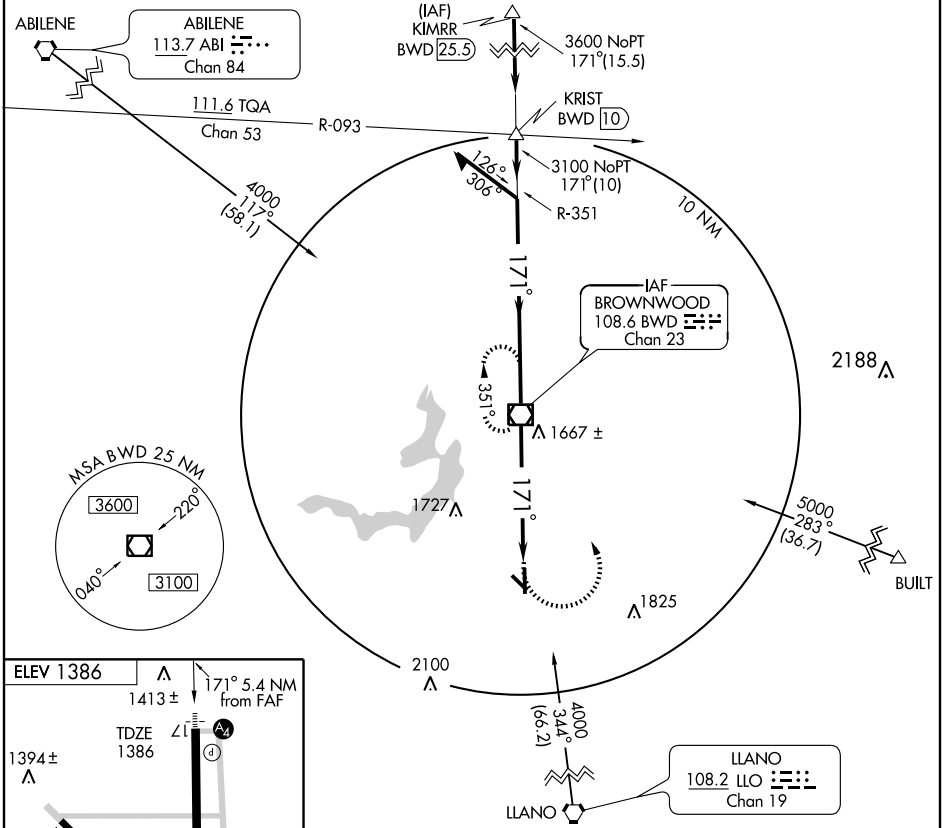
VOR/DME BWD <b>108.6</b> Chan 23	APP CRS <b>171°</b>	Rwy Idg TDZE Apt Elev	<b>5999</b> <b>1386</b> <b>1386</b>
--	------------------------	-----------------------------	---

# VOR RWY 17

BROWNWOOD RGNL (BWD)

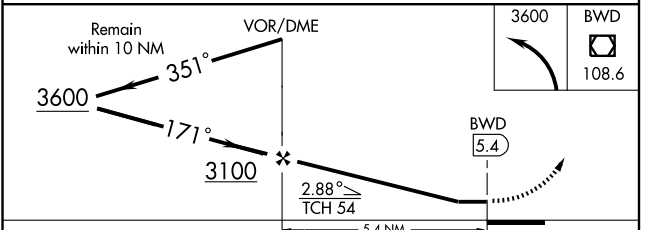
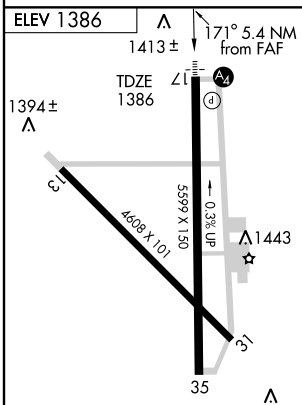
**▲** NA Inoperative table does not apply. **MALS** MISSED APPROACH: Climbing left turn to 3600 direct BWD VOR/DME and hold.

AWOS-3 <b>118.325</b>	FORT WORTH CENTER <b>127.45 290.3</b>	UNICOM <b>122.8</b> (CTAF) <b>0</b>
--------------------------	--	--



SC-3, 22 OCT 2009 to 19 NOV 2009

SC-3, 22 OCT 2009 to 19 NOV 2009



MIRL Rwys 13-31 **0** and 17-35 **0**

FAF to MAP 5.4 NM

Knots	60	90	120	150	180
Min:Sec	5:24	3:36	2:42	2:10	1:48

CATEGORY	A	B	C	D
S-17	1820-1	434 (500-1)	1820-1½ 434 (500-1½)	1820-1½ 434 (500-1½)
CIRCLING	1820-1 434 (500-1)	1840-1 454 (500-1)	1840-1½ 454 (500-1½)	1940-2 554 (600-2)