

BROWNWOOD, TEXAS

AL-705 (FAA)

RNAV (GPS) RWY 35

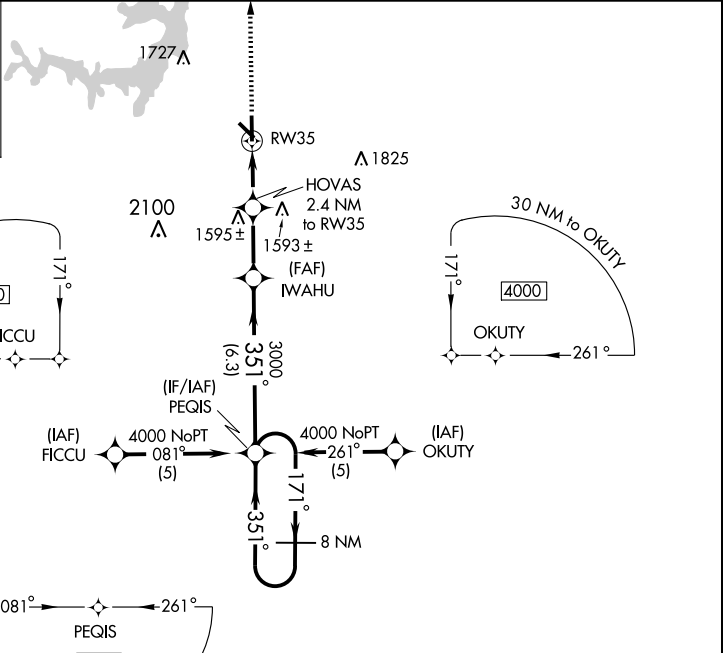
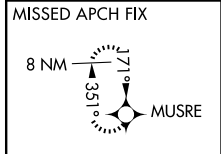
BROWNWOOD RGNL (BWD)

WAAS CH 77525 W35A	APP CRS 351°	Rwy Idg 5599 TDZE 1386 Apt Elev 1387
--	------------------------	---

⚠ If local altimeter setting not received, use Comanche County-City altimeter setting and increase all DAs/MDAs 60 feet. VDP NA with Comanche County-City altimeter setting. DME/DME RNP-0.3 NA.

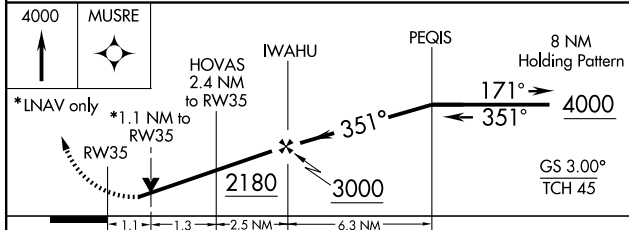
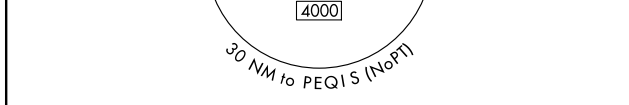
MISSED APPROACH: Climb to 4000 direct MUSRE and hold.

AWOS-3 118.325	FORT WORTH CENTER 127.45 290.3	UNICOM 122.8 (CTAF)
--------------------------	--	-------------------------------

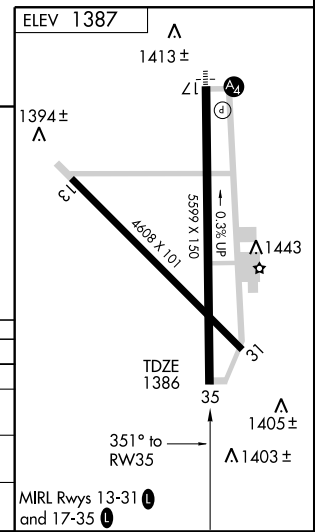


SC-3, 22 OCT 2009 to 19 NOV 2009

SC-3, 22 OCT 2009 to 19 NOV 2009



4000	MUSRE	HOVAS 2.4 NM to RW35	IWAHU	PEQIS	8 NM Holding Pattern
*RNAV only	*1.1 NM to RW35	171°	351°	171°	4000
		2180	3000		GS 3.00° TCH 45
		-1.1	-1.3	-2.5 NM	-6.3 NM
CATEGORY	A	B	C	D	
LPV DA	1636-1 250 (300-1)				
RNAV/VNAV DA	NA				
RNAV MDA	1780-1	394 (400-1)	1780-1½	394 (400-1½)	
CIRCLING	1840-1	453 (500-1)	1840-1½	453 (500-1½)	1940-2 553 (600-2)



BROWNWOOD, TEXAS
Amdt 1 09295

31° 48' N - 98° 57' W

RNAV (GPS) RWY 35