

WAAS CH <b>70325</b> <b>W17A</b>	APP CRS <b>171°</b>	Rwy Idg TDZE Apt Elev	<b>5599</b> <b>1387</b> <b>1387</b>
--	------------------------	-----------------------------	---

# RNAV (GPS) RWY 17

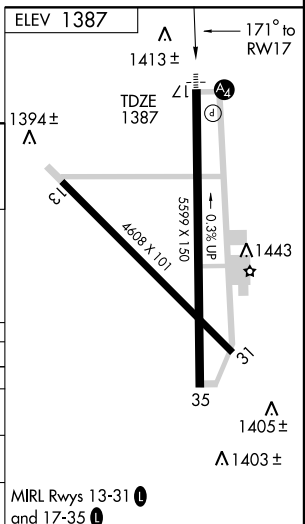
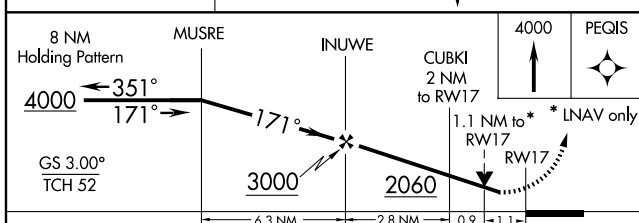
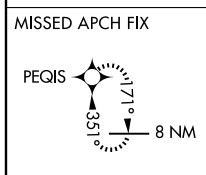
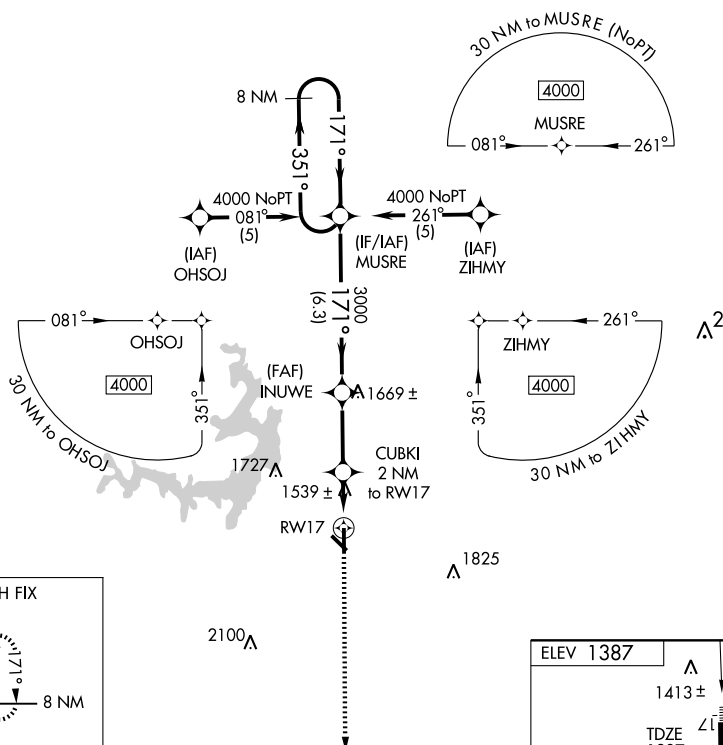
BROWNWOOD RGNL (BWD)

**▲** If local altimeter setting not received, use Comanche County-City altimeter setting and increase all DAs/MDAs 60 feet. Inoperative table does not apply to LPV all CATs and LNAV CAT C. VDP NA with Comanche County-City Altimeter setting. DME/DME RNP-0.3 NA.

**MALS**  
**▲**

**MISSED APPROACH:**  
Climb to 4000 direct PEQIS and hold.

AWOS-3 <b>118.325</b>	FORT WORTH CENTER <b>127.45 290.3</b>	UNICOM <b>122.8 (CTAF)</b>
--------------------------	--	-------------------------------



CATEGORY	A	B	C	D
LPV DA		1637-¾	250 (300-¾)	
LNAV/VNAV DA	NA			
LNAV MDA	1800-¾	413 (500-¾)	1800-1¼	413 (500-1¼)
CIRCLING	1840-1	453 (500-1)	1840-1½	1940-2
		453 (500-1½)	553 (600-2)	

SC-3, 22 OCT 2009 to 19 NOV 2009

SC-3, 22 OCT 2009 to 19 NOV 2009