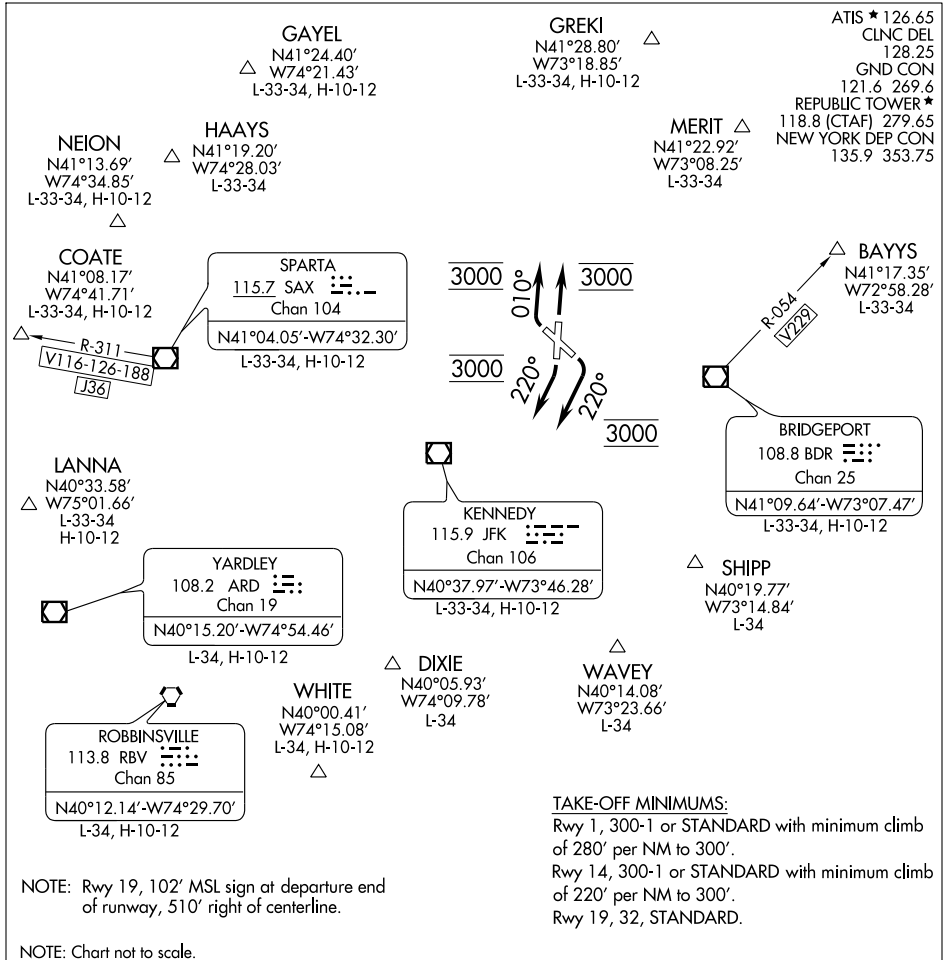


FARMINGDALE THREE DEPARTURE



NE-2, 22 OCT 2009 to 19 NOV 2009

NE-2, 22 OCT 2009 to 19 NOV 2009

DEPARTURE ROUTE DESCRIPTION

TAKE-OFF RUNWAY 1: Climb runway heading, maintain 3000 feet, thence . . .

TAKE-OFF RUNWAY 14 and 19: Climb right heading 220°, maintain 3000 feet, thence . . .

TAKE-OFF RUNWAY 32: Climb right heading 010°, maintain 3000 feet, thence . . .

. . . via vector to assigned route/fix. Expect clearance to filed altitude/flight level 10 minutes after departure.

BAYYS DEPARTURES: Expect vectors to BDR VOR/DME R-054 to BAYYS INT.

COATE DEPARTURES: Expect vectors to SAX VORTAC/SAX R-311 to COATE INT.

FARMINGDALE THREE DEPARTURE