

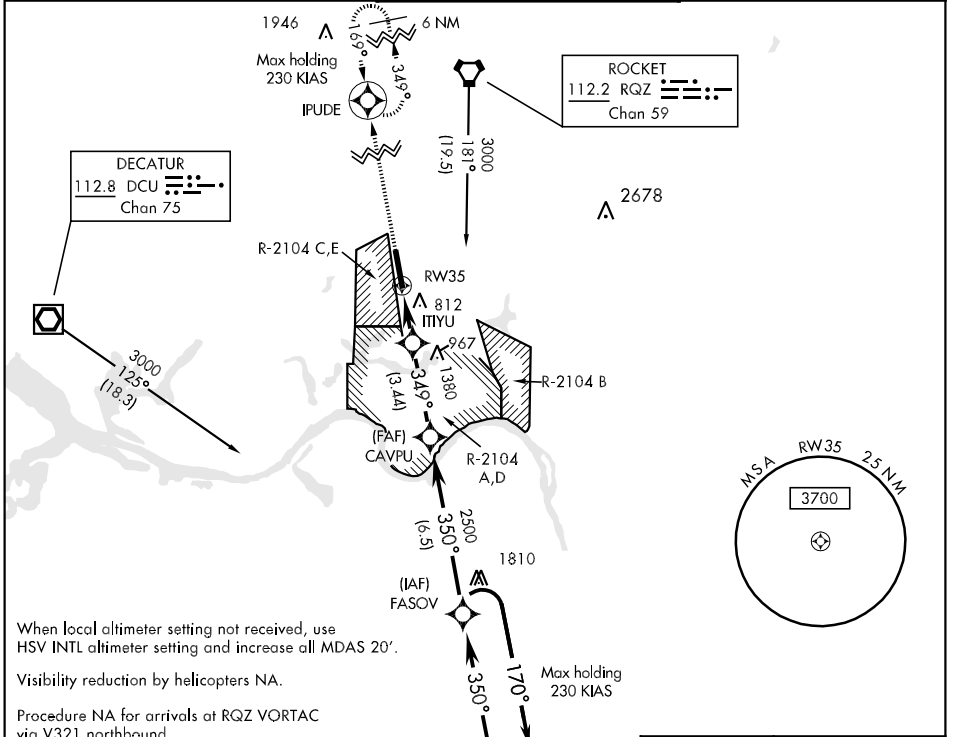
APCH CRS <b>349°</b>	Rwy Idg <b>7300</b>
	TDZE <b>657</b>
	Arpt Elev <b>684</b>

AL-703 [USA]

REDSTONE AAF (KHUA)

<p><b>▲</b> NA * When ALS inop, increase CAT CDE by ¼ mile.</p> <p><b>▼</b> ** Circling not authorized E of Rwy 17-35.</p>	<p>MISSED APPROACH: Climb to 3000 direct IPUDE and hold.</p>
--	--

HUNTSVILLE APP CON <b>E 125.6 354.1 W 118.05 239.0</b>	REDSTONE TOWER * <b>126.95 (CTAF) 0 290.275</b>	ASR/PAR
---	--	---------

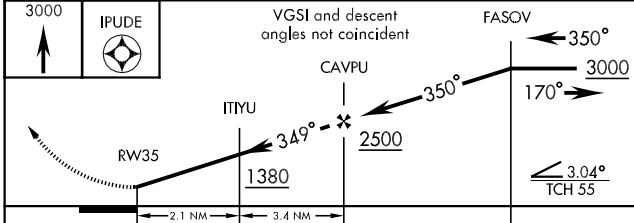


When local altimeter setting not received, use HSV INTL altimeter setting and increase all MDAS 20'.

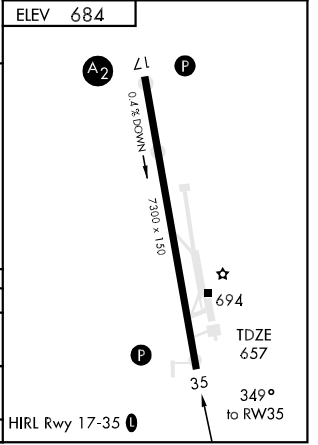
Visibility reduction by helicopters NA.

Procedure NA for arrivals at RQZ VORTAC via V321 northbound.

Procedure NA for arrivals at DCU VOR/DME via V49 northbound and V541 northwest bound.



CATEGORY	A	B	C	D	E
RNAV MDA *	1260-1	603 (600-1)	1260-1½ 603 (600-1½)	1260-1¾ 603 (600-1¾)	1260-2 603 (600-2)
CIRCLING **	1260-1	576 (600-1)	1260-1¾ 576 (600-1¾)	1280-2 596 (600-2)	1600-3 916 (1000-3)
S-PAR 35	955-1		298 (300-1)	GS 3.0°	



SE-4, 22 OCT 2009 to 19 NOV 2009

SE-4, 22 OCT 2009 to 19 NOV 2009