

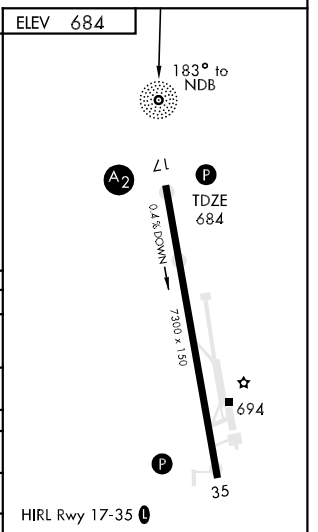
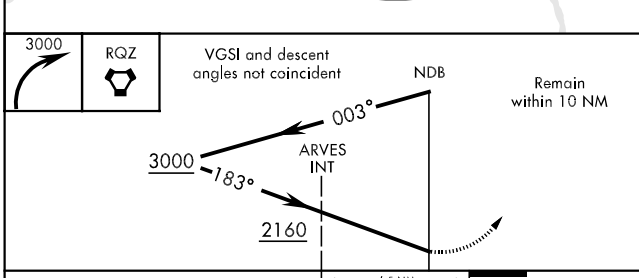
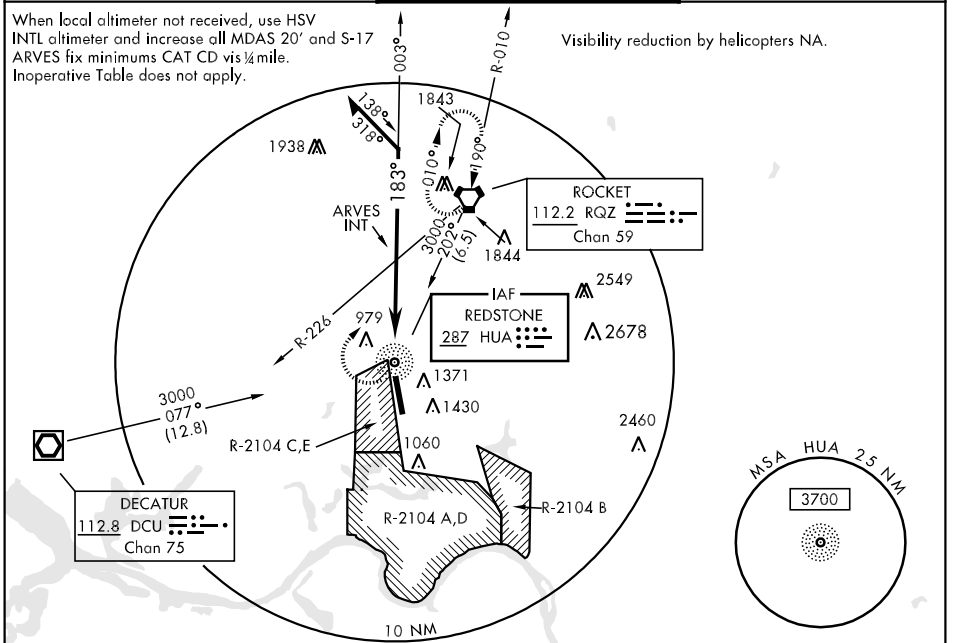
NDB HUA <b>287</b>	APCH CRS <b>183°</b>	Rwy Idg TDZE Arpt Elev <b>7300</b> <b>684</b> <b>684</b>
-----------------------	-------------------------	---

AL-703 [USA]

REDSTONE AAF (KHUA)

<p><b>▲</b> NA * When ALS inop, increase CAT BCD vis ¼ mile. ** When ALS inop, increase CAT CD vis ¼ mile. <b>▼</b> *** Circling not authorized E of Rwy 17-35.</p>	<p>SALS <b>A2</b></p>	<p>MISSED APPROACH: Climbing right turn to 3000 direct RQZ VORTAC and hold.</p>
---	---------------------------	---

HUNTSVILLE APP CON <b>E 125.6 354.1 W 118.05 239.0</b>	REDSTONE TOWER * <b>126.95 (CTAF) 290.275</b>	ASR/PAR
---	--	---------



CATEGORY	A	B	C	D
S-17*	2160-1½	1476 (1500-1½)	2160-2¾	1476 (1500-2¾)
CIRCLING ***	2160-1½ 1476 (1500-1½)	2160-1½ 1476 (1500-1½)	2160-3	1476 (1500-3)
ARVES FIX MINIMUMS				
S-17**	1280-1	596 (600-1)	1280-1½ 596 (600-1½)	1280-1½ 596 (600-1½)
CIRCLING ***	1280-1	596 (600-1)	1280-1½ 596 (600-1½)	1280-2 596 (600-2)
S-PAR 17	950-1	266	(300-1)	GS 3.0°