

FINDLAY, OHIO

AL-702 (FAA)

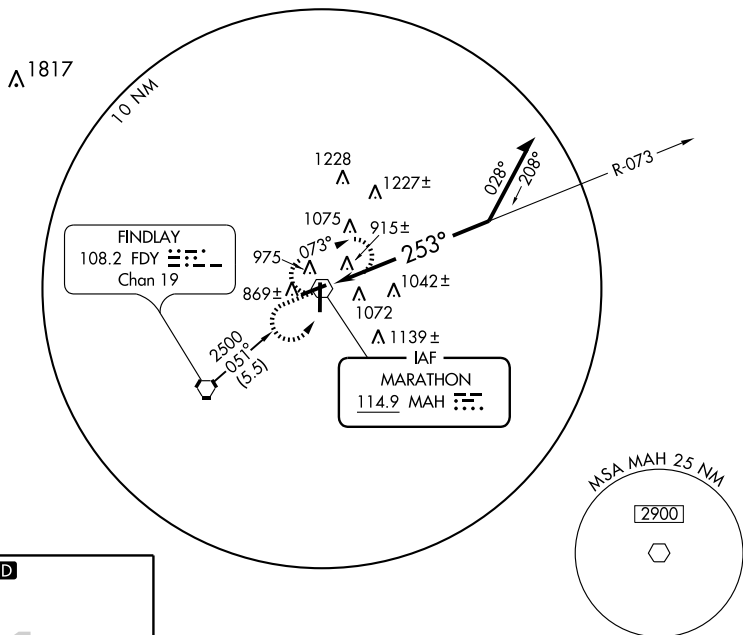
VOR MAH 114.9	APP CRS 253°	Rwy Idg 4558 TDZE 812 Apt Elev 813
-------------------------	------------------------	---

VOR RWY 25

FINDLAY (FDY)

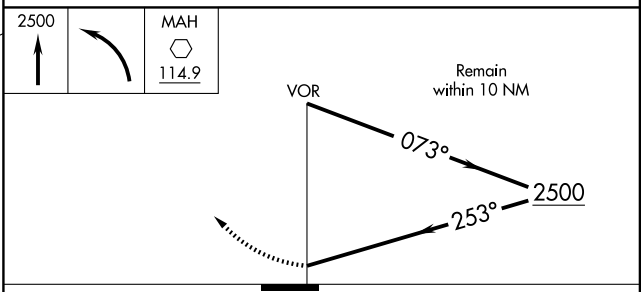
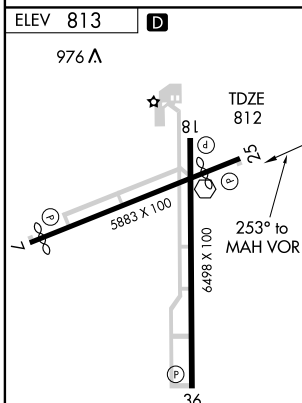
▽ If local altimeter setting not received, use Lima Allen County altimeter setting and increase all MDAs 80 feet.
▲ NA MISSED APPROACH: Climb to 2500 then left turn direct MAH VOR and hold.

ASOS 124.425	TOLEDO APP CON 120.8 317.55	UNICOM 122.725 (CTAF) 0
------------------------	---------------------------------------	-----------------------------------



EC-2, 22 OCT 2009 to 19 NOV 2009

EC-2, 22 OCT 2009 to 19 NOV 2009



CATEGORY	A	B	C	D
S-25	1500-1	688 (700-1)	1500-2 688 (700-2)	1500-2½ 688 (700-2½)
CIRCLING	1500-1	687 (700-1)	1500-2 687 (700-2)	1500-2½ 687 (700-2½)

FINDLAY, OHIO
Amdt 5 09127

41°01'N - 83°40'W

FINDLAY (FDY) VOR RWY 25