

# RNAV (GPS) RWY 36

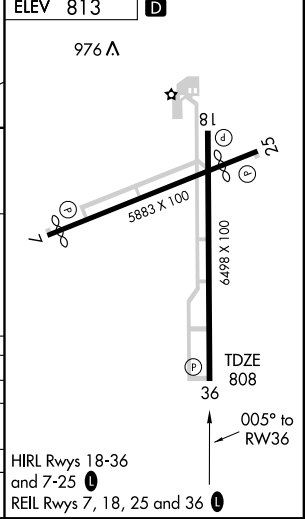
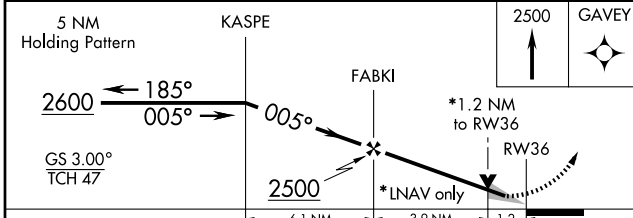
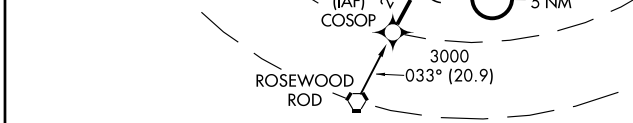
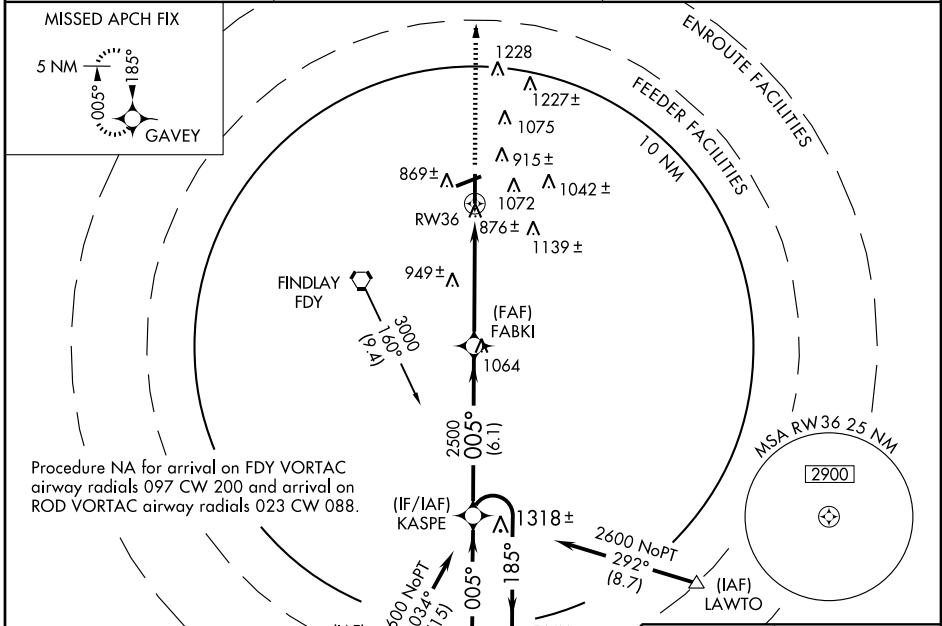
FINDLAY (FDY)

WAAS CH <b>72705</b> <b>W36A</b>	APP CRS <b>005°</b>	Rwy Idg TDZE Apt Elev	<b>6498</b> <b>808</b> <b>813</b>
--	------------------------	-----------------------------	---

**▽** If local altimeter setting not received, use Lima Allen County altimeter setting and increase all DAs/MDAs 80 feet. For uncompensated Baro-VNAV systems, LNAV/VNAV NA below -16°C (4°F) or above 47°C (116°F). DME/DME RNP-0.3 NA. VDP and Baro-VNAV NA when using Lima Allen County altimeter setting.

**▲** MISSED APPROACH: Climb to 2500 direct GAVEY and hold.

ASOS <b>124.425</b>	TOLEDO APP CON <b>120.8 317.55</b>	UNICOM <b>122.725 (CTAF) 0</b>
------------------------	---------------------------------------	-----------------------------------



CATEGORY	A	B	C	D
LPV DA	1106-1 298 (300-1)			
LNAV/VNAV DA	1229-1½ 421 (500-1½)			
LNAV MDA	1220-1 412 (500-1)	1220-1¼ 412 (500-1¼)		
CIRCLING	1440-1 627 (700-1)	1440-1¾ 627 (700-1¾)	1440-2 627 (700-2)	

HIRL Rwy 18-36 and 7-25 0  
REIL Rwy 7, 18, 25 and 36 0

EC-2, 22 OCT 2009 to 19 NOV 2009

EC-2, 22 OCT 2009 to 19 NOV 2009