

WAAS CH <b>56405</b> <b>W25A</b>	APP CRS <b>254°</b>	Rwy ldg TDZE Apt Elev	<b>4558</b> <b>812</b> <b>813</b>
--	------------------------	-----------------------------	---

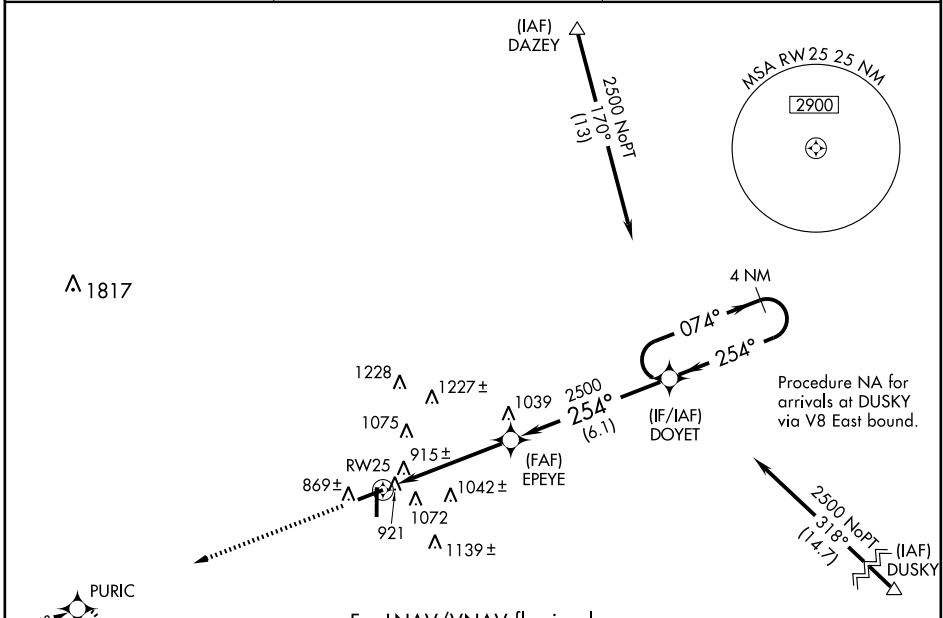
# RNAV (GPS) RWY 25

FINDLAY (FDY)

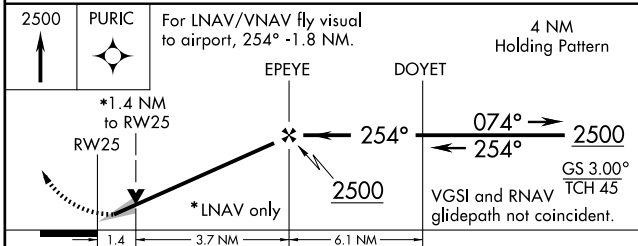
**▽** If local altimeter setting not received, use Lima Allen County altimeter setting and increase all DAs/MDAs 80 feet. For uncompensated Baro-VNAV systems, LNAV/VNAV NA below -16°C (4°F) or above 47°C (116°F). DME/DME RNP-0.3 NA. VDP and Baro-VNAV NA when using Lima Allen County altimeter setting.

**▲** MISSED APPROACH: Climb to 2500 direct PURIC and hold.

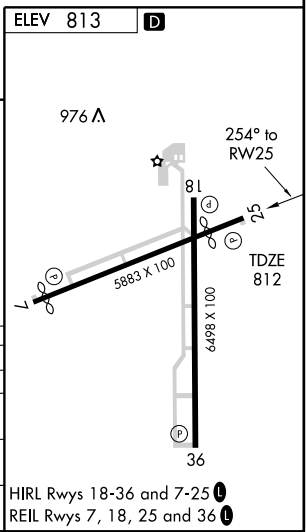
ASOS <b>124.425</b>	TOLEDO APP CON <b>120.8 317.55</b>	UNICOM <b>122.725 (CTAF) 0</b>
------------------------	---------------------------------------	-----------------------------------



For LNAV/VNAV fly visual to airport, 254° - 1.8 NM.



CATEGORY	A	B	C	D
LPV DA	1116-1		304 (400-1)	
LNAV/VNAV DA	1411-2		599 (600-2)	
LNAV MDA	1280-1	468 (500-1)	1280-1½ 468 (500-1½)	1280-1½ 468 (500-1½)
CIRCLING	1440-1	627 (700-1)	1440-1¾ 627 (700-1¾)	1440-2 627 (700-2)



EC-2, 22 OCT 2009 to 19 NOV 2009

EC-2, 22 OCT 2009 to 19 NOV 2009