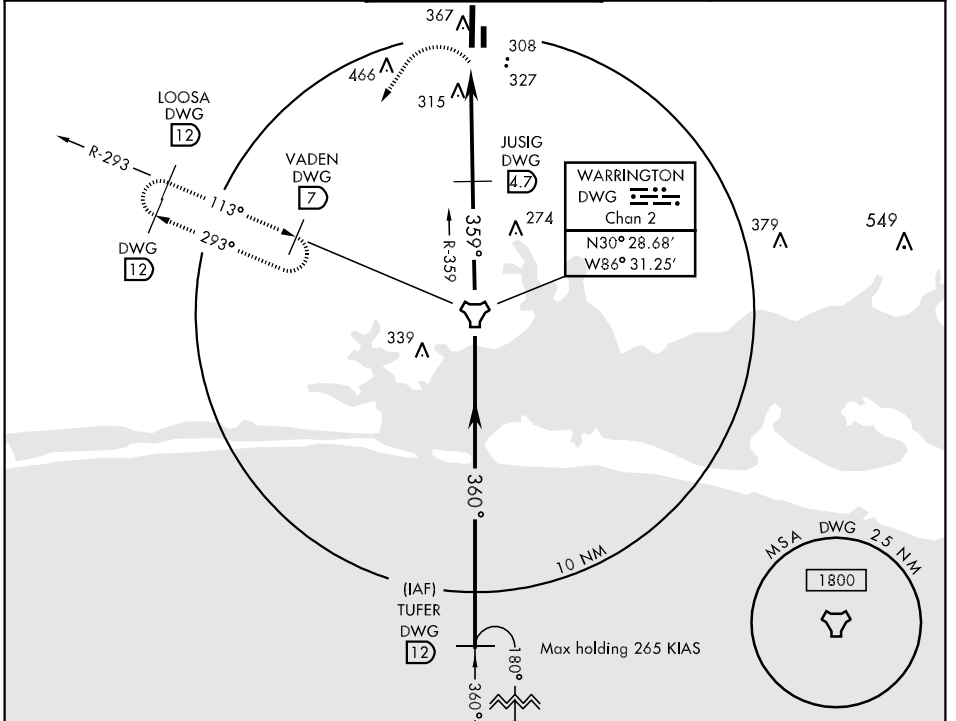


TACAN DWG Chan 2	APCH CRS 359°	Rwy Idg TDZE Arpt Elev 8000 191 191	AL-699 [USAF]	DUKE FLD (EGLIN AF AUX NR3)	(KEGI)
----------------------------	-------------------------	---	---------------	-----------------------------	--------

MISSED APPROACH: Climbing left turn to 2000 direct DWG R-293/7 DME (VADEN) and hold.

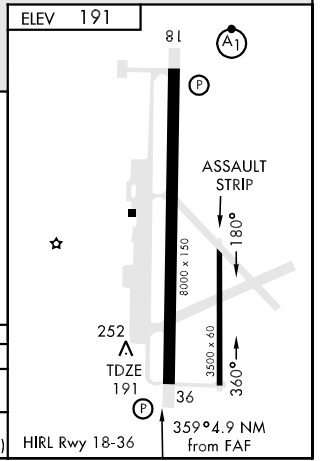
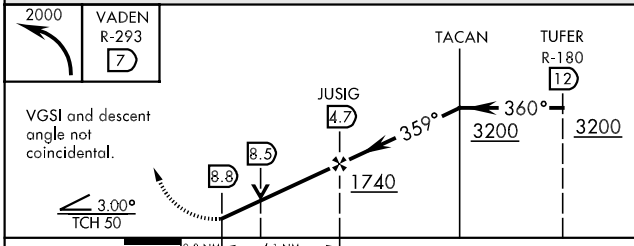
EGLIN APP CON 125.1 281.45 (271° - 089°) 132.1 360.6 (090° - 270°)	DUKE TOWER ★ 133.2 290.425	GND CON 251.125
--	--------------------------------------	---------------------------



SE-3, 22 OCT 2009 to 19 NOV 2009

SE-3, 22 OCT 2009 to 19 NOV 2009

EMERG SAFE ALT 100 NM 3600



CATEGORY	A	B	C	D	E
S-36	640-1 449 (500-1)		640-1½ 449 (500-1½)	640-1½ 449 (500-1½)	
CIRCLING	680-1 489 (500-1)		700-1½ 509 (600-1½)	760-2 569 (600-2)	840-2½ 649 (700-2½)