

APCH CRS	Rwy Idg	8000
001°	TDZE	191
	Arpt Elev	191

AL-699 [USAF]

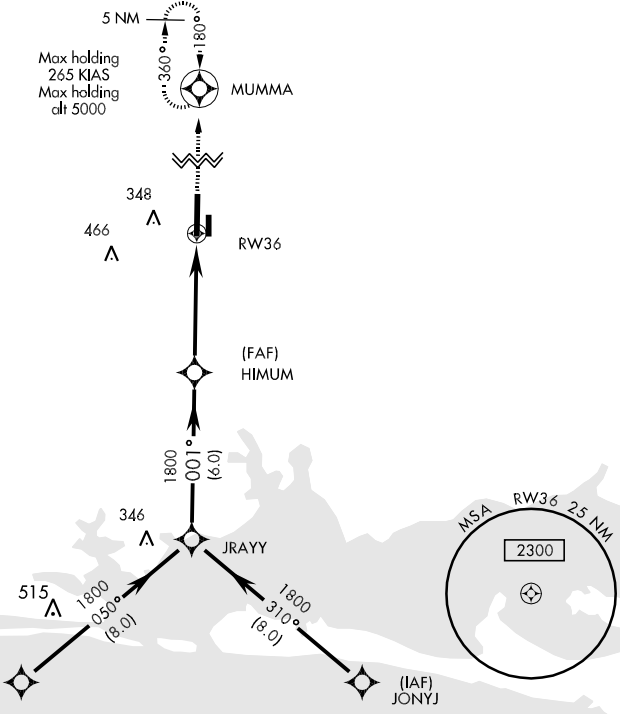
DUKE FLD (EGLIN AF AUX NR3) (KEGI)

MISSED APPROACH: Climb straight ahead to 2000 direct MUMMA and hold.

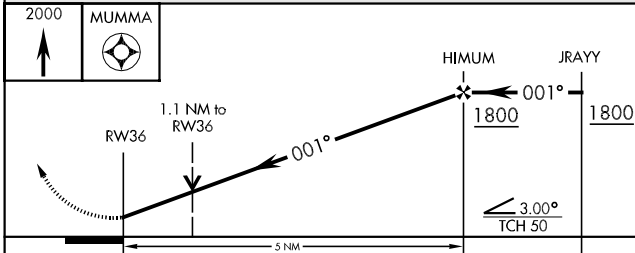
EGLIN APP CON	DUKE TOWER ★	GND CON
125.1 281.45 (271° - 089°)	133.2 290.425	251.125
132.1 360.6 (090° - 270°)		

DME/DME RNP-0.3 NA.

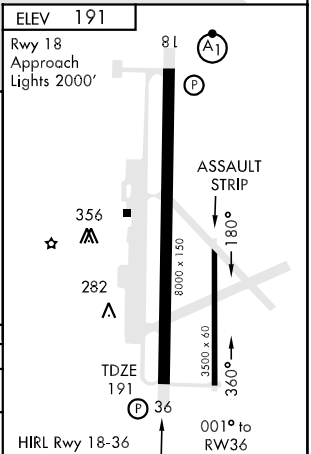
Procedure not useable at times due to restricted area activity.



EMERG SAFE ALT 100 NM 3600



CATEGORY	A	B	C	D	E
LNAV	640-1 449 (500-1)		640-1¼ 449 (500-1¼)	640-1½ 449 (500-1½)	
CIRCLING	680-1 489 (500-1)		700-1½ 509 (600-1½)	760-2 569 (600-2)	840-2¼ 649 (700-2¼)



SE-3, 22 OCT 2009 to 19 NOV 2009

SE-3, 22 OCT 2009 to 19 NOV 2009