

APP CRS	Rwy Idg	N/A
331°	TDZE	N/A
	Apt Elev	614

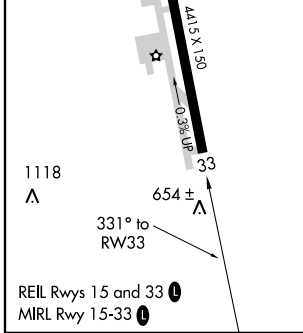
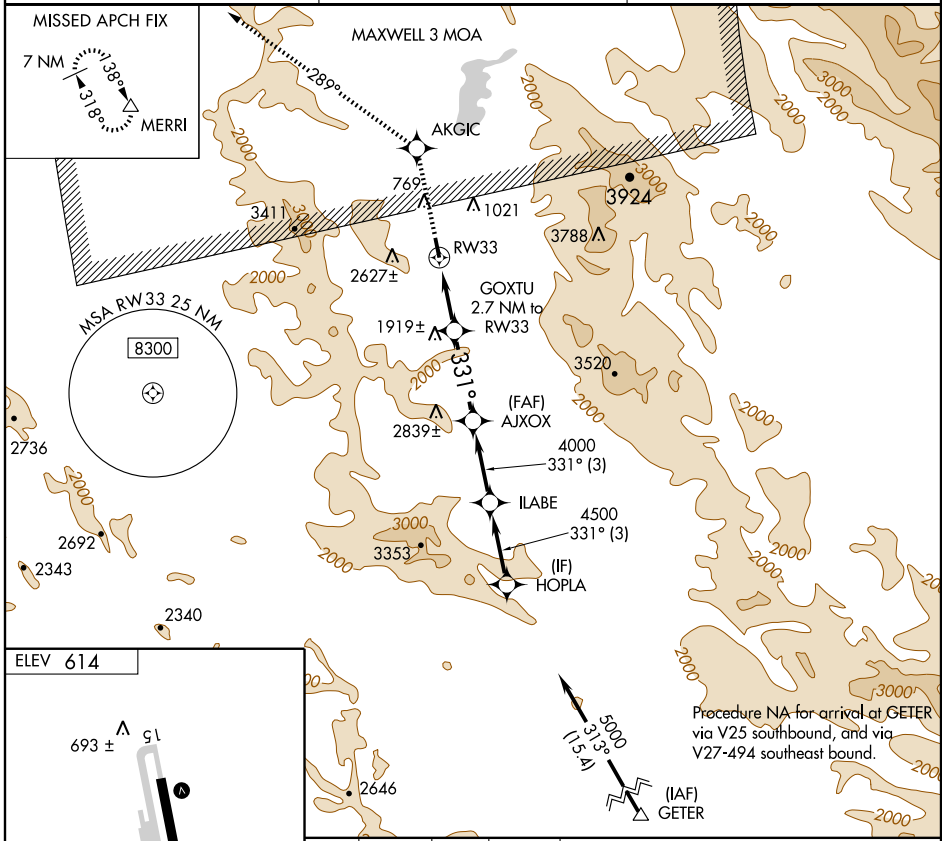
# RNAV (GPS) -B

UKIAH MUNI (UKI)

**▽** Circling NA west of Rwy 15-33. DME/DME RNP- 0.3 NA.  
**▲** When local climeter setting not received, procedure NA.

MISSED APPROACH: Climb to 6700 direct AKGIC and via track 289° to MERRI and hold, continue climb-in-hold to 6700.

ASOS <b>119,275</b>	OAKLAND CENTER <b>127.8 353.5</b>	UNICOM <b>123.0 (CTAF)</b>
------------------------	--------------------------------------	-------------------------------



6700	AKGIC	MERRI	HOPLA
↑	✦	trk 289°	△
GOXTU 2.7 NM to RW33		AJXOX	ILABE
RW33		4000	5000
7.49° TCH 40		4500	Procedure Turn NA
2800		331°	
2.7 NM		3.3 NM	3 NM
CATEGORY	A	B	C
CIRCLING	2540-1¼ 1926 (2000-1¼)	2540-1½ 1926 (2000-1½)	2540-3 1926 (2000-3)

SW-2, 22 OCT 2009 to 19 NOV 2009

SW-2, 22 OCT 2009 to 19 NOV 2009