

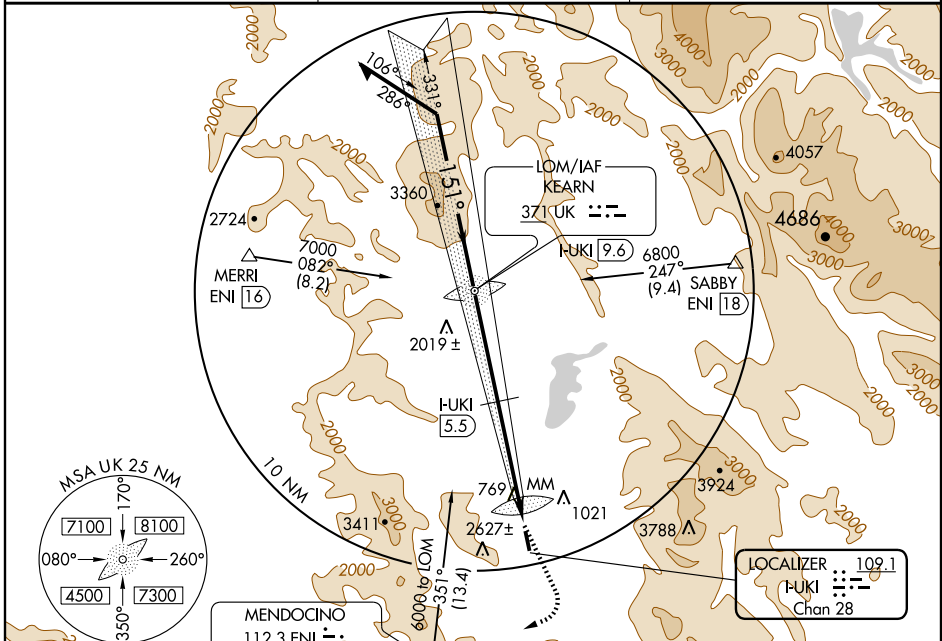
LOC RWY 15

UKIAH MUNI (UKI)

LOC/DME I-UKI 109.1 Chan 28	APP CRS 151°	Rwy Idg TDZE Apt Elev	4415 614 614
--	------------------------	-----------------------------	---

⚠ Circling NA west of Rwy 15-33. MISSED APPROACH: Climbing left turn to 4000 via heading 140°, then climbing right turn to 6000 direct ENI VORTAC.

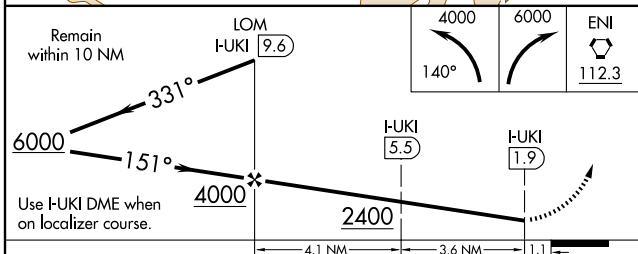
ASOS 119.275	OAKLAND CENTER 127.8 353.5	UNICOM 123.0 (CTAF)
------------------------	--------------------------------------	-------------------------------



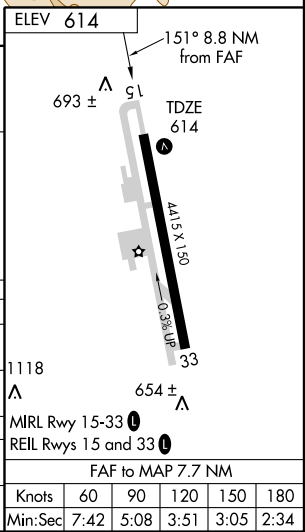
SW-2, 22 OCT 2009 to 19 NOV 2009

SW-2, 22 OCT 2009 to 19 NOV 2009

Remain within 10 NM



CATEGORY	A	B	C	D
S-15	2400-1¼ 1786 (1800-1¼)	2400-1½ 1786 (1800-1½)	2400-3	1786 (1800-3)
CIRCLING	2400-1¼ 1786 (1800-1¼)	2400-1½ 1786 (1800-1½)	2400-3	1786 (1800-3)
DME MINIMUMS				
S-15	1720-1¼ 1106 (1200-1¼)	1720-1½ 1106 (1200-1½)	1720-3	1106 (1200-3)
CIRCLING	1720-1¼ 1106 (1200-1¼)	1720-1½ 1106 (1200-1½)	1720-3	1106 (1200-3)



1118	693 ±	654 ±	33
MIRL Rwy 15-33	REIL Rws 15 and 33	FAF to MAP 7.7 NM	
Knots	60	90	120 150 180
Min:Sec	7:42	5:08	3:51 3:05 2:34