


RNAV (GPS) RWY 4

LEXINGTON/BLE GRASS (LEX)

WAAS CH 70401 W04A	APP CRS 046°	Rwy Idg TDZE Apt Elev	6603 971 979
--	------------------------	-----------------------------	---

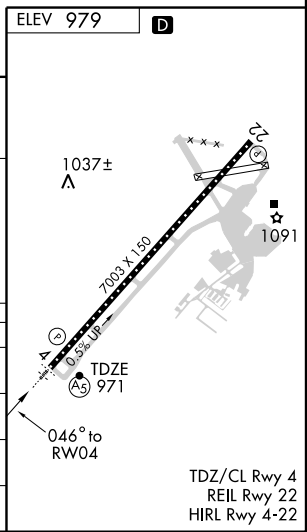
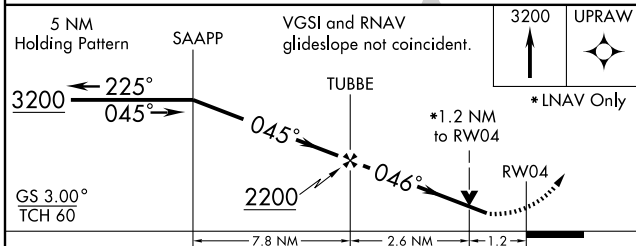
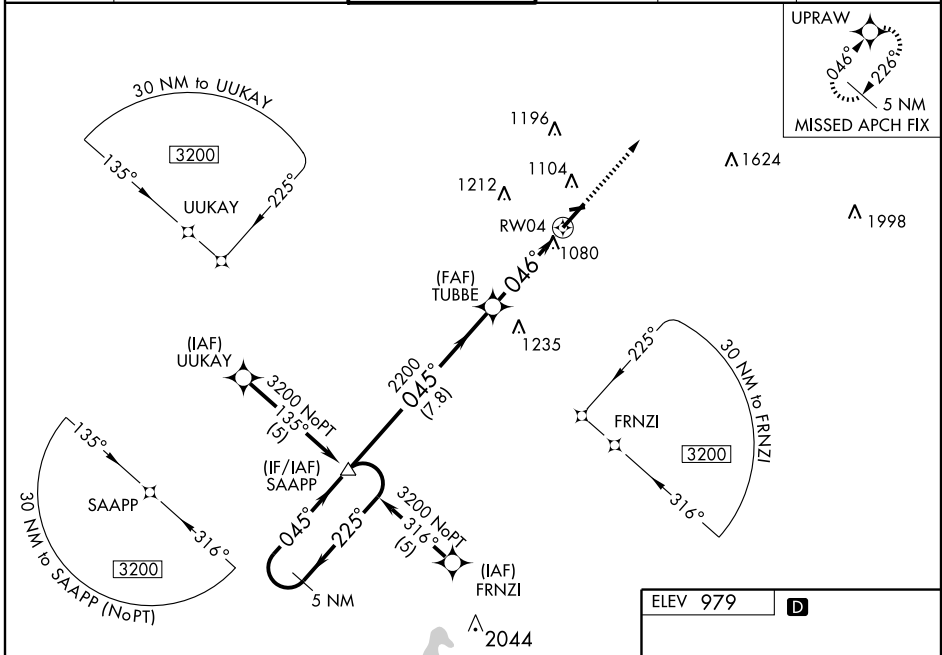
⚠ For uncompensated Baro-VNAV systems, LNAV/VNAV NA below -16°C (4°F) or above 47°C (116°F). If local altimeter setting not received, use Capital City altimeter setting and increase all DAs 63 feet and all MDAs 80 feet. Baro-VNAV and VDP NA when using Capital City altimeter setting. DME/DME RNP-0.3 NA. For inoperative MALS/R increase LPV all Cats visibilities to RVR 5000, and LNAV Cats A, B, C to RVR 5000, Cat. D to RVR 6000. Visibility reduction by helicopters NA.

MALS/R



MISSED APPROACH:
Climb to 3200 direct
UPRAW and hold.

ATIS 126.3	LEXINGTON APP CON 120.15 259.3	LEXINGTON TOWER 119.1 257.8	GND CON 121.9	CLNC DEL 132.35	UNICOM 122.950
----------------------	--	---------------------------------------	-------------------------	---------------------------	--------------------------



CATEGORY	A	B	C	D
LPV DA	1274/40		303 (300-¾)	
LNAV/ VNAV DA	1362/50		391 (400-1)	
LNAV MDA	1340/40		369 (400-¾)	
			1340/50 369 (400-1)	
CIRCLING	1420-1½ 441 (500-1½)	1440-1½	461 (500-1½)	1540-2 561 (600-2)

SE-1, 22 OCT 2009 to 19 NOV 2009

SE-1, 22 OCT 2009 to 19 NOV 2009