


ILS or LOC RWY 4

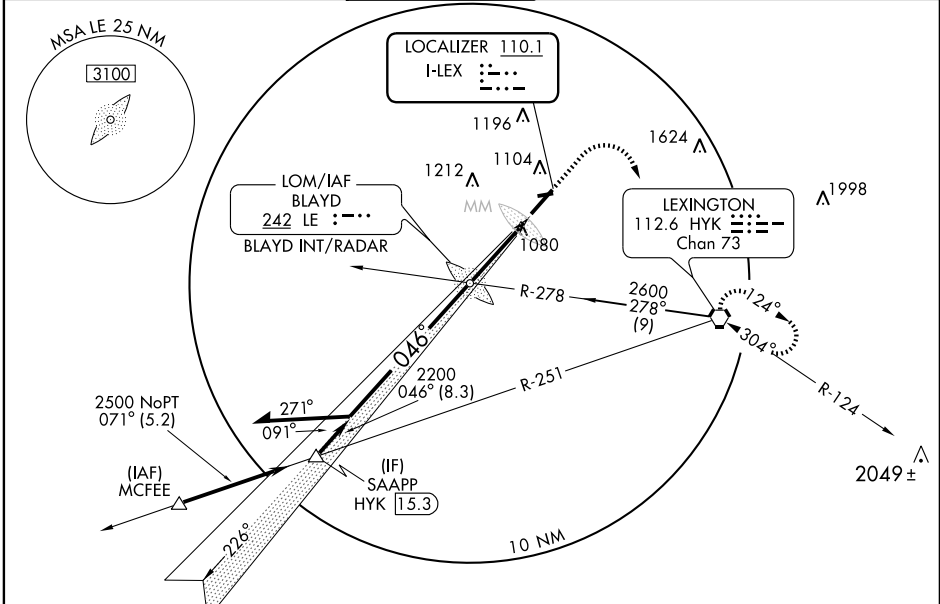
LEXINGTON/BUE GRASS (LEX)

LOC I-LEX 110.1	APP CRS 046°	Rwy ldg 6603 TDZE 971 Apt Elev 979
---------------------------	------------------------	---

⚠ Inoperative table does not apply to S-ILS. For inoperative MALSRS increase S-LOC all Cats visibility to RVR 5000. If local altimeter setting not received, use Capital City altimeter setting and increase DA to 1234 and all MDA's 80 feet. Visibility reduction by helicopters NA.

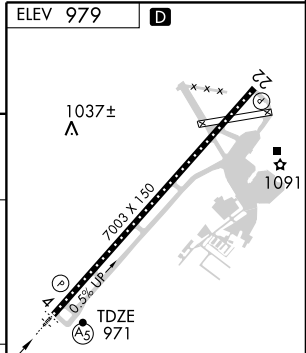
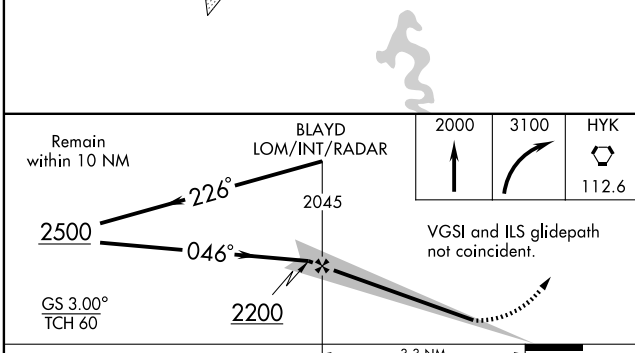
MALSRS
 MISSED APPROACH: Climb to 2000, then climbing right turn to 3100 direct HYK VORTAC and hold, continue climb-in-hold to 3100.

ATIS 126.3	LEXINGTON APP CON 120.15 259.3	LEXINGTON TOWER 119.1 257.8	GND CON 121.9	CLNC DEL 132.35	UNICOM 122.950
----------------------	--	---------------------------------------	-------------------------	---------------------------	--------------------------



SE-1, 22 OCT 2009 to 19 NOV 2009

SE-1, 22 OCT 2009 to 19 NOV 2009



CATEGORY	A	B	C	D
S-ILS 4		1171/40	200 (200-¾)	
S-LOC 4		1300/40	329 (400-¾)	
CIRCLING	1420-1 441 (500-1)	1440-1 461 (500-1)	1440-1½ 461 (500-1½)	1540-2 561 (600-2)

FAF to MAP 3.3 NM					
Knots	60	90	120	150	180
Min:Sec	3:18	2:12	1:39	1:19	1:06