

VOR/DME STS <b>113.0</b> Chan <b>77</b>	APP CRS <b>146°</b>	Rwy Idg TDZE Apt Elev	<b>5119</b> <b>121</b> <b>128</b>
---	------------------------	-----------------------------	---

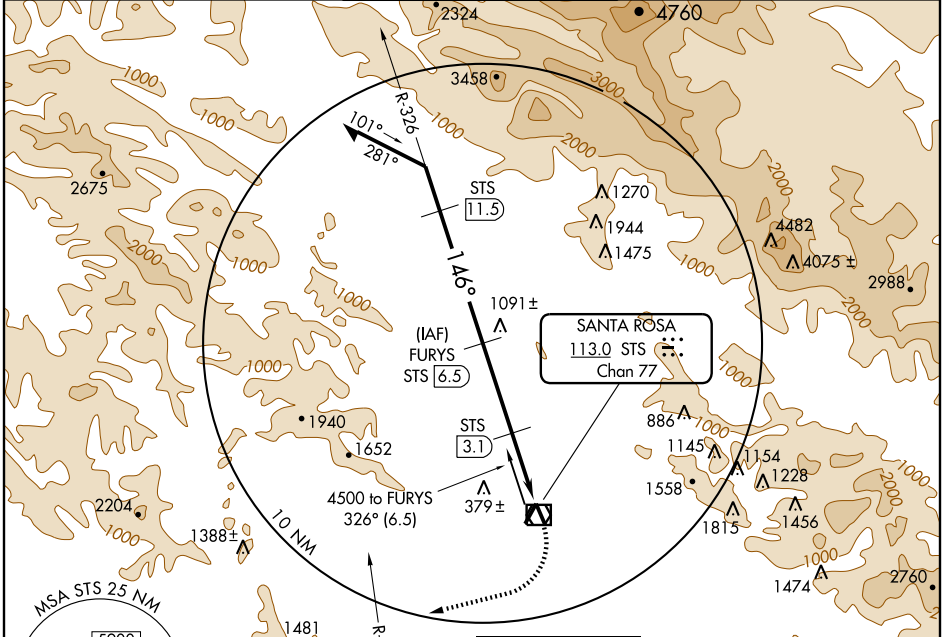
# VOR/DME RWY 14

SANTA ROSA/ CHARLES M. SCHULZ-SONOMA COUNTY (STS)

**T** When local altimeter not received, procedure not authorized.

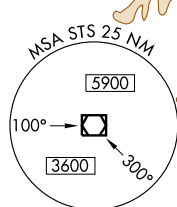
MISSED APPROACH: Climbing right turn to 4000 via heading 240° and PYE R-335 to PYE VORTAC.

ATIS <b>120.55</b>	OAKLAND CENTER <b>127.8 353.5</b>	SANTA ROSA TOWER * <b>118.5 (CTAF) 363.0</b>	GND CON <b>121.9</b>	UNICOM <b>122.95</b>
-----------------------	--------------------------------------	---	-------------------------	-------------------------



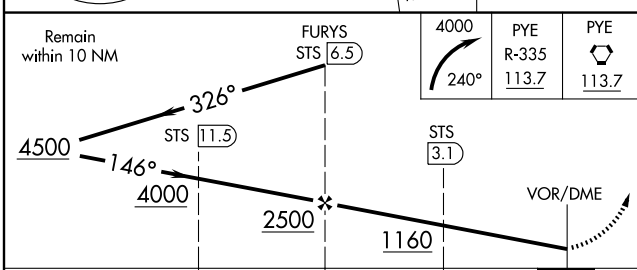
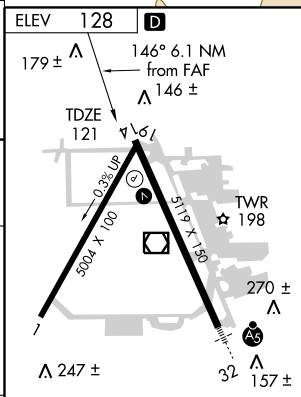
SW-2, 22 OCT 2009 to 19 NOV 2009

SW-2, 22 OCT 2009 to 19 NOV 2009



**MISSED APCH FIX**

POINT REYES  
PYE  
113.7  
Chan 84



CATEGORY	A	B	C	D
S-14	640-1 519 (600-1)		640-1½ 519 (600-1½)	640-1¾ 519 (600-1¾)
CIRCLING	640-1 512 (600-1)	680-1 552 (600-1)	740-1¾ 612 (700-1¾)	740-2 612 (700-2)

REIL Rwy 14 113.0  
HIRL Rwy 14-32 113.0

# VOR/DME RWY 14