

SANTA ROSA, CALIFORNIA

AL-696 (FAA)

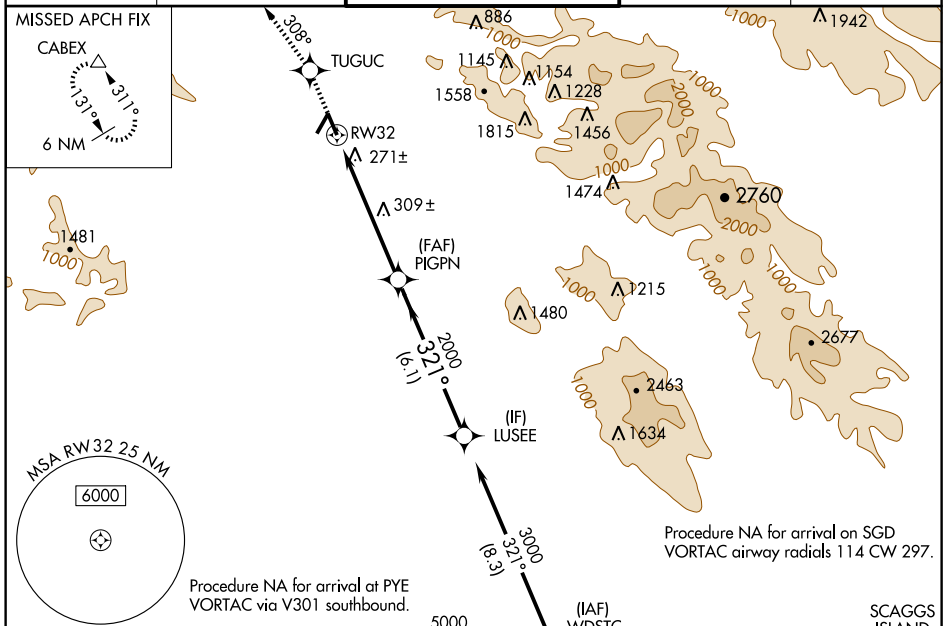
WAAS CH 72611 W32A	APP CRS 321°	Rwy Idg 5119 TDZE 122 Apt Elev 128
--	------------------------	---

SANTA ROSA/ CHARLES M. SCHULZ-SONOMA COUNTY (STS)

RNAV (GPS) RWY 32

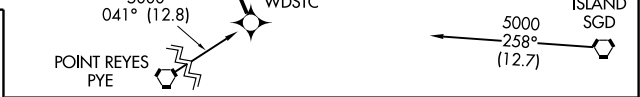
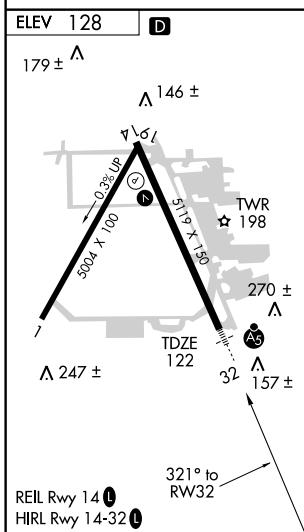
	For uncompensated Baro-VNAV systems, LNAV/VNAV NA below -15°C (5°F) or above 48°C (118°F). DME/DME RNP -0.3 NA.		MISSED APPROACH: Climb to 6000 direct TUGUC and via 308° track to CABEX and hold, continue climb-in-hold to 6000.
--	--	--	---

ATIS 120.55	OAKLAND CENTER 127.8 353.5	SANTA ROSA TOWER* 118.5 (CTAF) 363.0	GND CON 121.9	UNICOM 122.95
-----------------------	--------------------------------------	--	-------------------------	-------------------------



SW-2, 22 OCT 2009 to 19 NOV 2009

SW-2, 22 OCT 2009 to 19 NOV 2009



6000	TUGUC	308° track	CABEX	LUSEE	Procedure Turn NA
*LNAV only		*1.3 NM to RW32	PIGPN	321°	3000
RW32		1.3	4.4 NM	6.1 NM	GS 3.00° TCH 53

CATEGORY	A	B	C	D
LPV DA		455/40	333 (400-¾)	
LNAV/VNAV DA		556/50	434 (500-1)	
LNAV MDA	600/24	478 (500-½)	600/40 478 (500-¾)	600/50 478 (500-1)
CIRCLING	620-1 492 (500-1)	680-1 552 (600-1)	740-1¾ 612 (700-1¾)	740-2 612 (700-2)

SANTA ROSA, CALIFORNIA
Orig 09015

SANTA ROSA/ CHARLES M. SCHULZ-SONOMA COUNTY (STS)
38°31'N-122°49'W

RNAV (GPS) RWY 32