

PANAMA CITY, FLORIDA

AL-695 (FAA)

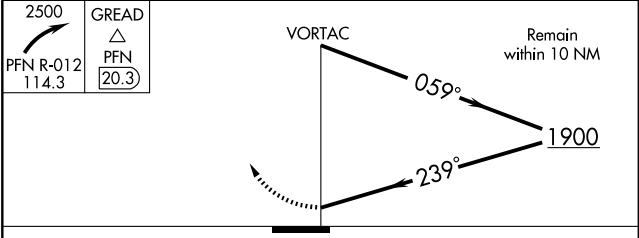
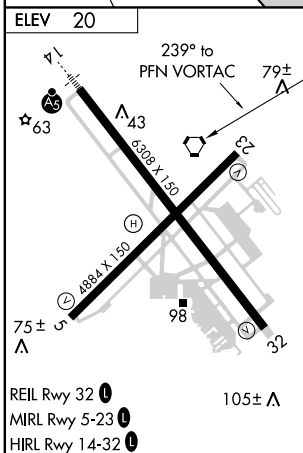
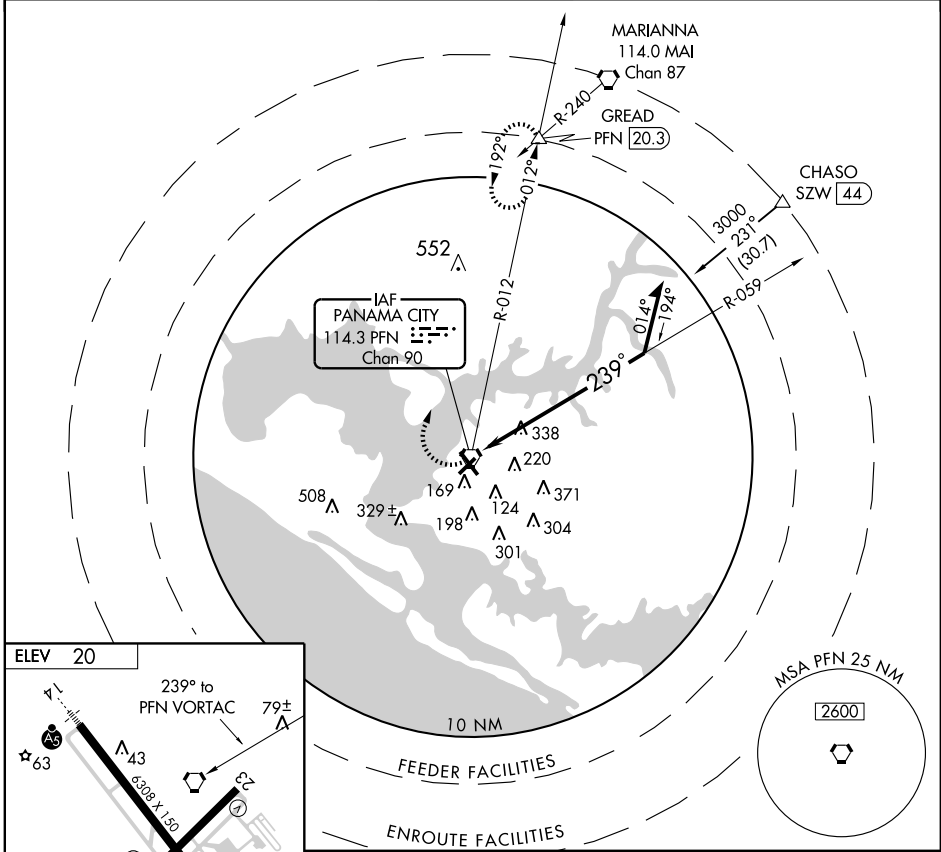
VORTAC PFN 114.3 Chan 90	APP CRS 239°	Rwy Idg TDZE Apt Elev	N/A N/A 20
--	------------------------	-----------------------------	---------------------------------------

VOR or TACAN-A

PANAMA CITY-BAY COUNTY INTL (PF'N)

▼ If local altimeter setting not received, use Tyndall AFB altimeter setting and increase all MDAs 40 feet. **▲** MISSED APPROACH: Climbing right turn to 2500 via PFN R-012 to GREAD Int/PFN 20.3 DME and hold.

ATIS 119.975	TYNDALL APP CON ★ 124.15 341.7	PANAMA CITY TOWER ★ 120.5 (CTAF) 0 269.0	GND CON 121.65	UNICOM 122.95
------------------------	--	--	--------------------------	-------------------------



CATEGORY	A	B	C	D
CIRCLING	700-1	680 (700-1)	700-2 680 (700-2)	700-2¼ 680 (700-2¼)

PANAMA CITY, FLORIDA
Amdt 14 06327

30°13'N-85°41'W

PANAMA CITY-BAY COUNTY INTL (PF'N)
VOR or TACAN-A

SE-3, 22 OCT 2009 to 19 NOV 2009

SE-3, 22 OCT 2009 to 19 NOV 2009