

# VOR or TACAN RWY 32

PANAMA CITY-BAY COUNTY INTL (PF'N)

VORTAC PFN <b>114.3</b> Chan <b>90</b>	APP CRS <b>332°</b>	Rwy Idg TDZE Apt Elev	<b>6308</b> <b>20</b> <b>20</b>
--	------------------------	-----------------------------	---------------------------------------

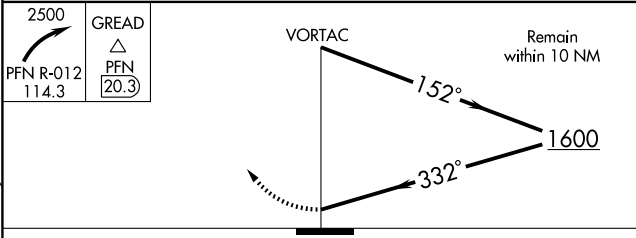
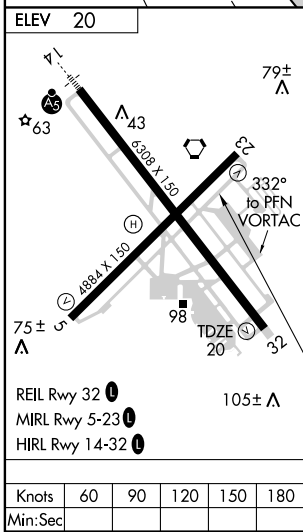
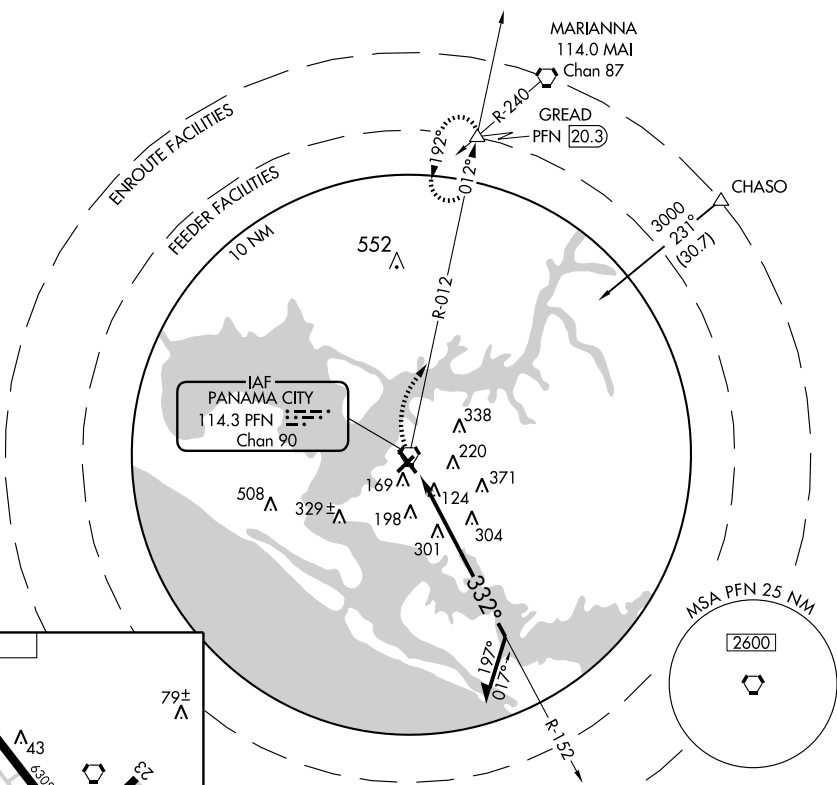
**▼** If local altimeter not received, use Tyndall AFB altimeter  
**▲** setting and increase all MDAs 40 feet.

MISSED APPROACH: Climbing right turn to 2500 via PFN R-012 to GREAD Int/PFN 20.3 DME and hold.

ATIS <b>119.975</b>	TYNDALL APP CON ★ <b>124.15 341.7</b>	PANAMA CITY TOWER★ <b>120.5</b> (CTAF) <b>269.0</b>	GND CON <b>121.65</b>	UNICOM <b>122.95</b>
------------------------	--	--	--------------------------	-------------------------

SE-3, 22 OCT 2009 to 19 NOV 2009

SE-3, 22 OCT 2009 to 19 NOV 2009



CATEGORY	A	B	C	D
S-32	660-1	640 (700-1)	660-1¼ 640 (700-1¼)	660-2 640 (700-2)
CIRCLING	660-1	640 (700-1)	660-1¼ 640 (700-1¼)	660-2 640 (700-2)