

RNAV (GPS) RWY 32

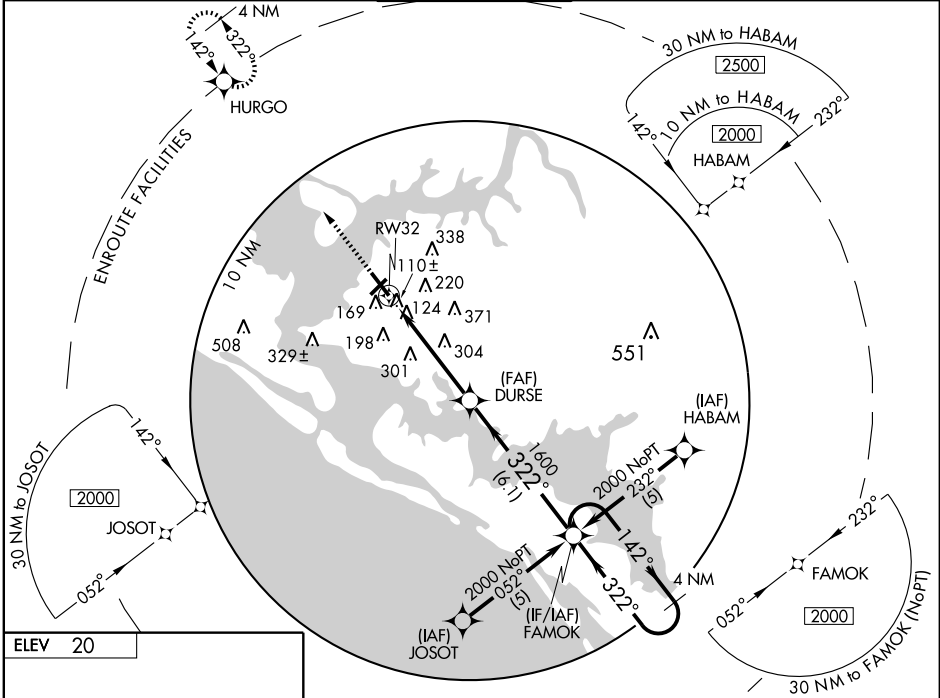
PANAMA CITY-BAY COUNTY INTL (P.F.N)

WAAS CH 56216 W32A	APP CRS 322°	Rwy Idg TDZE Apt Elev	6308 20 20
--	------------------------	-----------------------------	---------------------------------------

⚠ If local altimeter setting not received, use Tyndall AFB altimeter setting and increase LPV DA to 360 feet; increase LNAV/VNAV DA and all MDAs 40 feet.
⚠ Baro-VNAV NA when using Tyndall AFB altimeter setting. DME/DME RNP-0.3 NA. Baro-VNAV NA below -1.5°C (5°F).

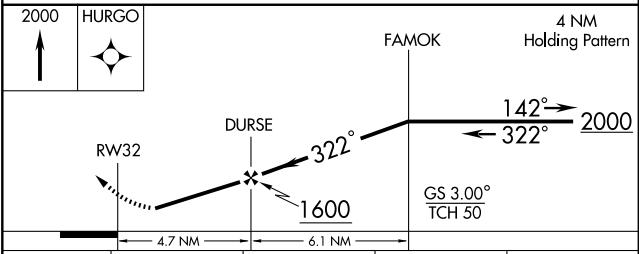
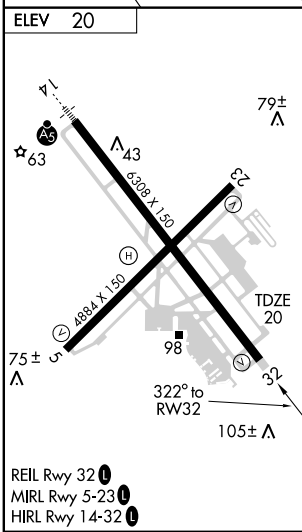
MISSED APPROACH: Climb to 2000 direct HURGO and hold.

ATIS 119.975	TYNDALL APP CON* 124.15 341.7	PANAMA CITY TOWER* 120.5 (CTAF) 269.0	GND CON 121.65	UNICOM 122.95
------------------------	---	--	--------------------------	-------------------------



SE-3, 22 OCT 2009 to 19 NOV 2009

SE-3, 22 OCT 2009 to 19 NOV 2009



CATEGORY	A	B	C	D
LPV DA	340-1 320 (400-1)			
LNAV/VNAV DA	520-1¾ 500 (500-1¾)			
LNAV MDA	620-1 600 (600-1)	620-1½ 600 (600-1½)	620-1¾ 600 (600-1¾)	620-1¾ 600 (600-1¾)
CIRCLING	620-1¾ 600 (600-1¾)			640-2 620 (700-2)