

RNAV (GPS) RWY 23

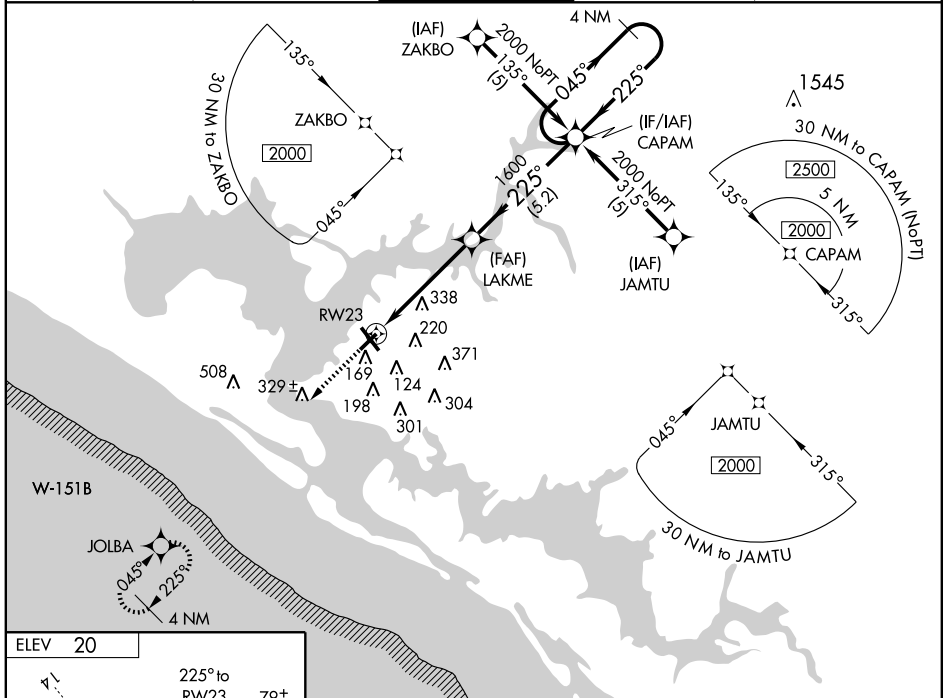
PANAMA CITY-BAY COUNTY INTL (PFN)

APP CRS	Rwy Idg	4884
225°	TDZE	14
	Apt Elev	20

Baro-VNAV NA below -15°C (5°F). GPS or RNP-0.3 Required.
 DME/DME RNP -0.3 NA. When local altimeter setting not received
 Baro-VNAV NA. If local altimeter setting not received use Tyndall
 AFB altimeter setting and increase all MDAs 40 feet.

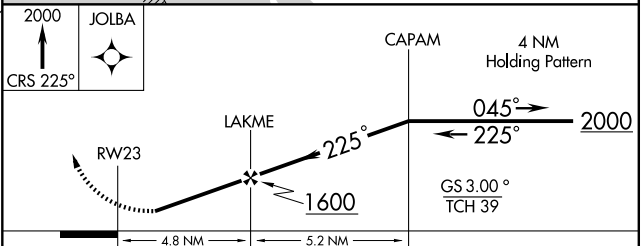
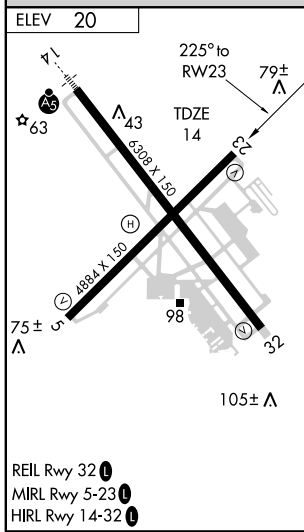
MISSED APPROACH: Climb to 2000 via 225° course
 to JOLBA WP and hold.

ATIS 119.975	TYNDALL APP CON★ 124.15 341.7	PANAMA CITY TOWER★ 120.5 (CTAF) 0 269.0	GND CON 121.65	UNICOM 122.95
------------------------	---	---	--------------------------	-------------------------



SE-3, 22 OCT 2009 to 19 NOV 2009

SE-3, 22 OCT 2009 to 19 NOV 2009



CATEGORY	A	B	C	D
GLS PA DA	NA			
LNAV/VNAV DA	600-2 586 (600-2)			
LNAV MDA	600-1	586 (600-1)	600-1½ 586 (600-1½)	600-1¾ 586 (600-1¾)
CIRCLING	600-2 580 (600-2)			640-2 620 (700-2)