

NDB RWY 14

PANAMA CITY-BAY COUNTY INTL (PF'N)

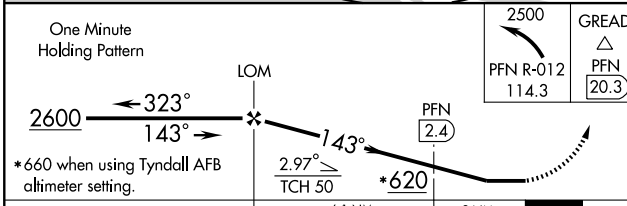
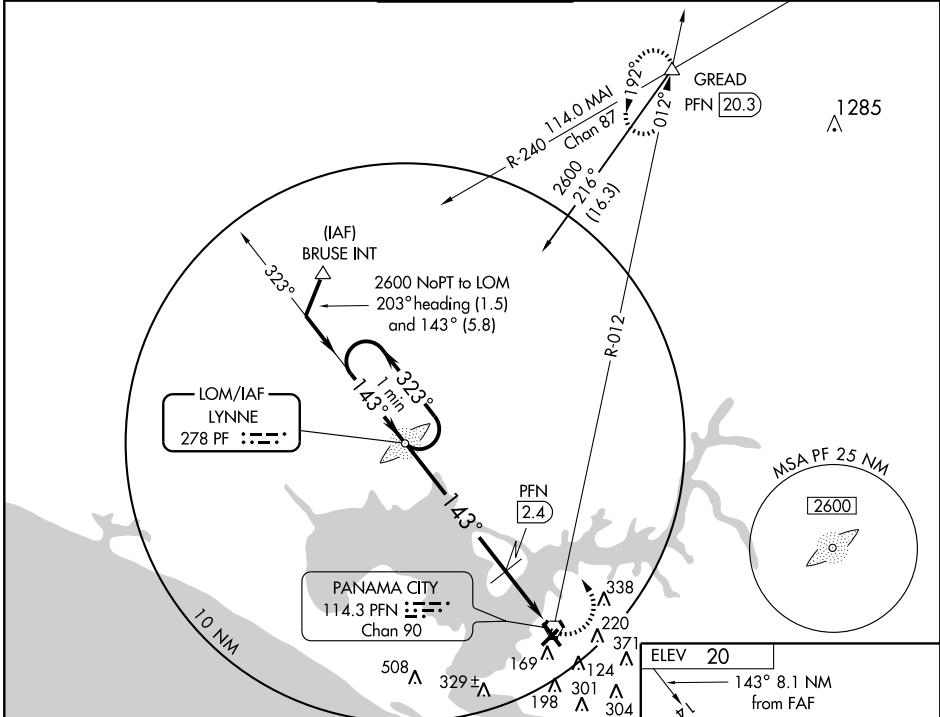
LOM PF 278	APP CRS 143°	Rwy Idg TDZE Apt Elev	6308 12 20
----------------------	------------------------	-----------------------------	---------------------------------------

▼ If local altimeter setting not received, use Tyndall AFB altimeter setting and increase all MDAs 40 feet.

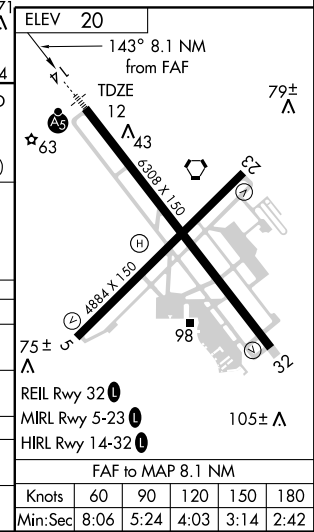
▲ MALSR

MISSED APPROACH: Climbing left turn to 2500 via PFN R-012 to GREAD Int/PFN 20.3 DME and hold.

ATIS 119.975	TYNDALL APP CON* 124.15 341.7	PANAMA CITY TOWER* 120.5 (CTAF) 0 269.0	GND CON 121.65	UNICOM 122.95
------------------------	---	--	--------------------------	-------------------------



CATEGORY	A	B	C	D
S-14	620-3/4	608 (600-3/4)	620-1 1/4 608 (600-1 1/4)	620-1 3/4 608 (600-1 3/4)
CIRCLING	620-1	600 (600-1)	620-1 3/4 600 (600-1 3/4)	640-2 620 (700-2)
DME MINIMUMS				
S-14	520-3/4	508 (500-3/4)	520-1 508 (500-1)	520-1 1/4 508 (500-1 1/4)
CIRCLING	520-1	500 (500-1)	520-1 1/2 500 (500-1 1/2)	640-2 620 (700-2)



SE-3, 22 OCT 2009 to 19 NOV 2009

SE-3, 22 OCT 2009 to 19 NOV 2009