

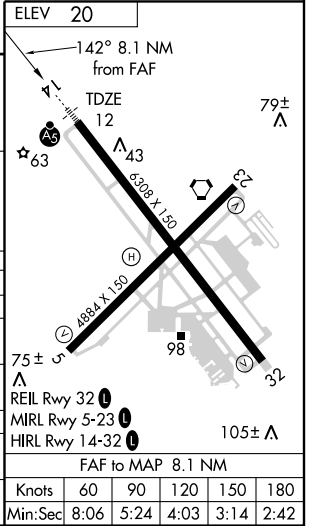
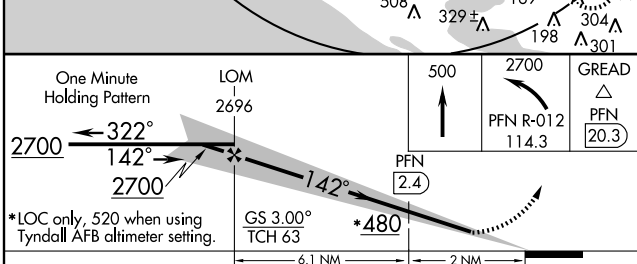
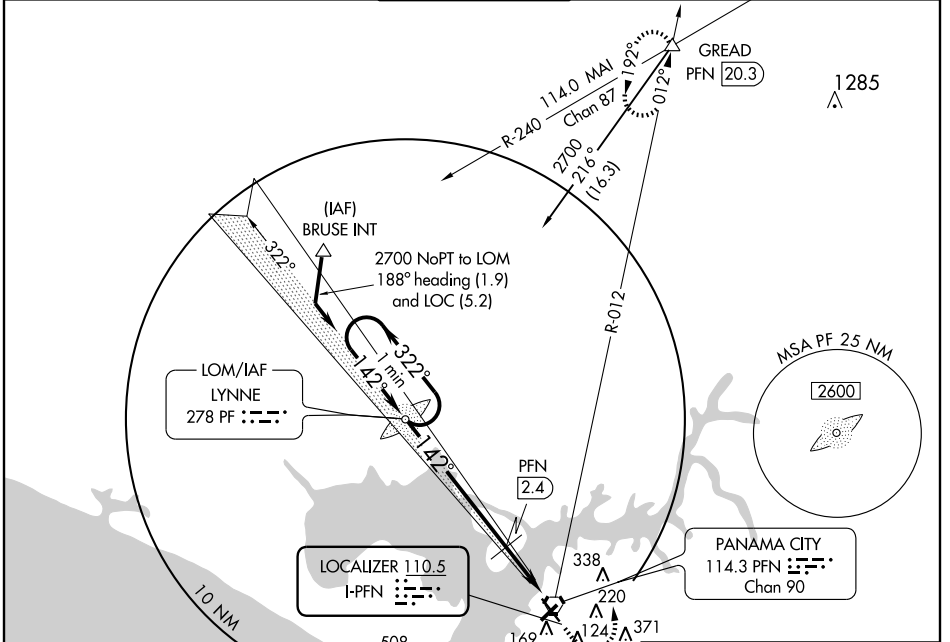
ILS RWY 14

PANAMA CITY-BAY COUNTY INTL (PFN)

LOC I-PFN 110.5	APP CRS 142°	Rwy Idg TDZE Apt Elev	6308 12 20
---------------------------	------------------------	-----------------------------	---------------------------------------

	If local altimeter setting not received, use Tyndall AFB altimeter setting and increase all DH/MDAS 40 feet.		MISSED APPROACH: Climb to 500 then climbing left turn to 2700 via PFN R-012 to GREAD Int/PFN 20.3 DME and hold.
	If local altimeter setting not received, use Tyndall AFB altimeter setting and increase all DH/MDAS 40 feet.		

ATIS 119.975	TYNDALL APP CON* 124.15 341.7	PANAMA CITY TOWER* 120.5 (CTAF) 0 269.0	GND CON 121.65	UNICOM 122.95
------------------------	---	---	--------------------------	-------------------------



CATEGORY	A	B	C	D
S-ILS 14	212-1/2 200 (200-1/2)			
S-LOC 14	480-1/2 468 (500-1/2)		480-3/4 468 (500-3/4)	480-1 468 (500-1)
CIRCLING	480-1 460 (500-1)	520-1 500 (500-1)	520-1 1/2 500 (500-1 1/2)	640-2 620 (700-2)
DME MINIMUMS				
S-LOC 14	360-1/2 348 (400-1/2)		360-3/4 348 (400-3/4)	
CIRCLING	480-1 460 (500-1)	520-1 500 (500-1)	520-1 1/2 500 (500-1 1/2)	640-2 620 (700-2)

SE-3, 22 OCT 2009 to 19 NOV 2009

SE-3, 22 OCT 2009 to 19 NOV 2009