

# VOR RWY 6

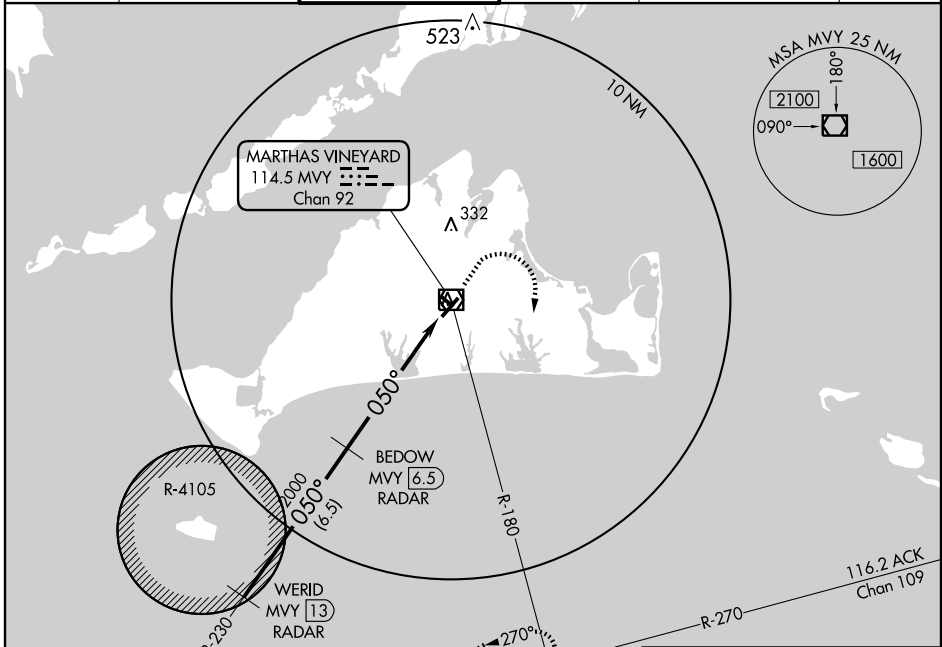
VINEYARD HAVEN / MARTHAS VINEYARD (MVY)

VOR/DME MVY <b>114.5</b> Chan <b>92</b>	APP CRS <b>050°</b>	Rwy Idg <b>5500</b> TDZE <b>59</b> Apt Elev <b>68</b>
---	------------------------	---

**▼** Radar or DME Required.  
**▲** If local altimeter setting not received, use Hyannis altimeter setting and increase all MDAs 60 feet.

MISSED APPROACH: Climb to 500 then climbing right turn to 2500 via MVY VOR/DME R-180 to CLAMY Int and hold.

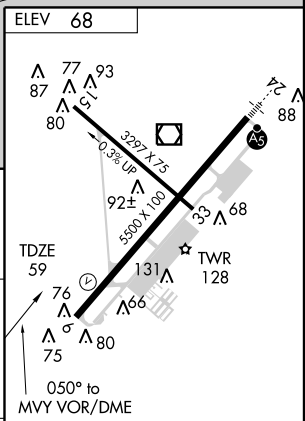
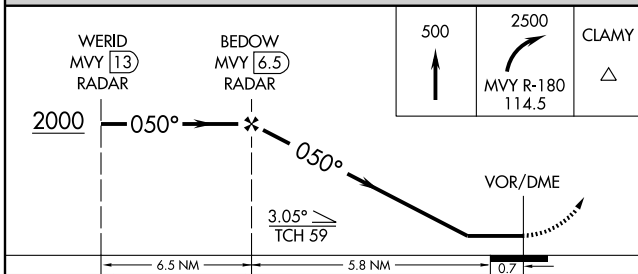
ATIS <b>126.25</b>	CAPE APP CON * <b>119.7</b>	VINEYARD TOWER * <b>121.4</b> (CTAF)	GND CON <b>121.8</b>	CLNC DEL <b>121.8</b> <b>119.7</b> (Tower closed)	UNICOM <b>122.95</b>
-----------------------	--------------------------------	---	-------------------------	---	-------------------------



NE-1, 22 OCT 2009 to 19 NOV 2009

NE-1, 22 OCT 2009 to 19 NOV 2009

## RADAR REQUIRED



CATEGORY	A	B	C	D
S-6		400-1	341 (400-1)	
CIRCLING	460-1 392 (400-1)	520-1 452 (500-1)	520-1½ 452 (500-1½)	620-2 552 (600-2)

- HIRL Rwy 6-24 (1)
- MIRL Rwy 15-33 (1)
- REIL Rws 6 and 33 (1)