

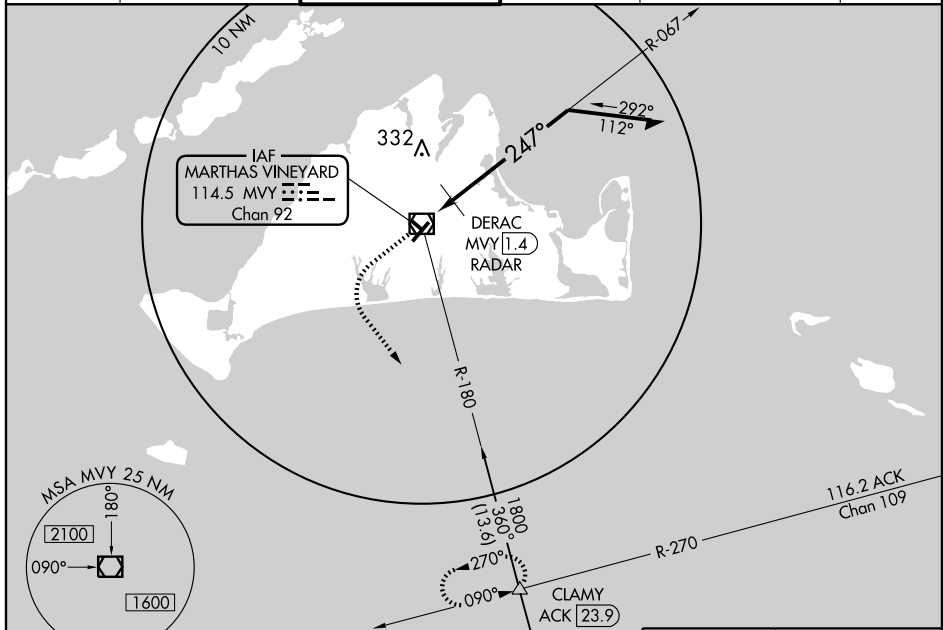
VOR/DME MVY <b>114.5</b> Chan <b>92</b>	APP CRS <b>247°</b>	Rwy Idg <b>5500</b> TDZE <b>63</b> Apt Elev <b>68</b>
---	------------------------	---

# VOR RWY 24

VINEYARD HAVEN / MARTHAS VINEYARD (MVY)

<p><b>▼</b> If local altimeter setting not received, use Hyannis altimeter setting and increase all MDAs 60 feet.</p> <p><b>▲</b> For inoperative MALSR, increase DERAC fix minimums Cat D visibility to RVR 6000.</p>	<p>MALSR</p>	<p>MISSED APPROACH: Climb to 600 then climbing left turn to 2500 via MVY VOR/DME R-180 to CLAMY Int and hold.</p>
--	--------------	---

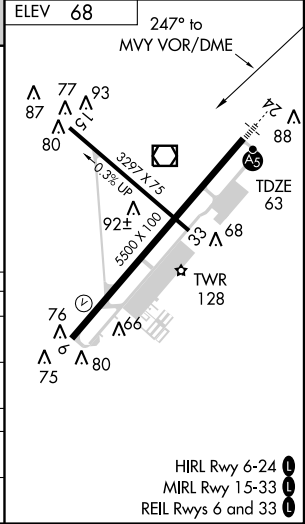
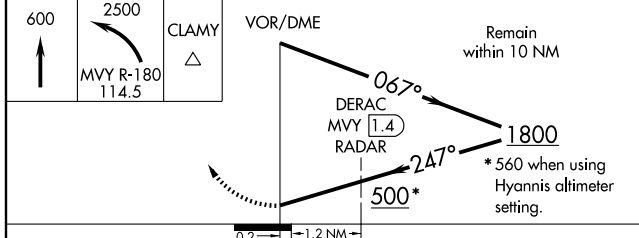
ATIS <b>126.25</b>	CAPE APP CON * <b>119.7</b>	VINEYARD TOWER * <b>121.4</b> (CTAF)	GND CON <b>121.8</b>	CINC DEL <b>121.8</b> <b>119.7</b> (Tower closed)	UNICOM <b>122.95</b>
-----------------------	--------------------------------	---	-------------------------	---	-------------------------



NE-1, 22 OCT 2009 to 19 NOV 2009

NE-1, 22 OCT 2009 to 19 NOV 2009

ELEV <b>68</b>	247° to MVY VOR/DME
----------------	---------------------



CATEGORY	A	B	C	D
S-24	500/24	437 (500-½)	500/40 437 (500-¾)	500/50 437 (500-1)
CIRCLING	500-1 432 (500-1)	520-1 452 (500-1)	520-1½ 452 (500-1½)	620-2 552 (600-2)
DERAC FIX MINIMUMS				
S-24	440/24 377 (400-½)			440/50 377 (400-1)
CIRCLING	460-1 392 (400-1)	520-1 452 (500-1)	520-1½ 452 (500-1½)	620-2 552 (600-2)

HIRL Rwy 6-24  
MIRL Rwy 15-33  
REIL Rws 6 and 33