

RNAV (GPS) RWY 24

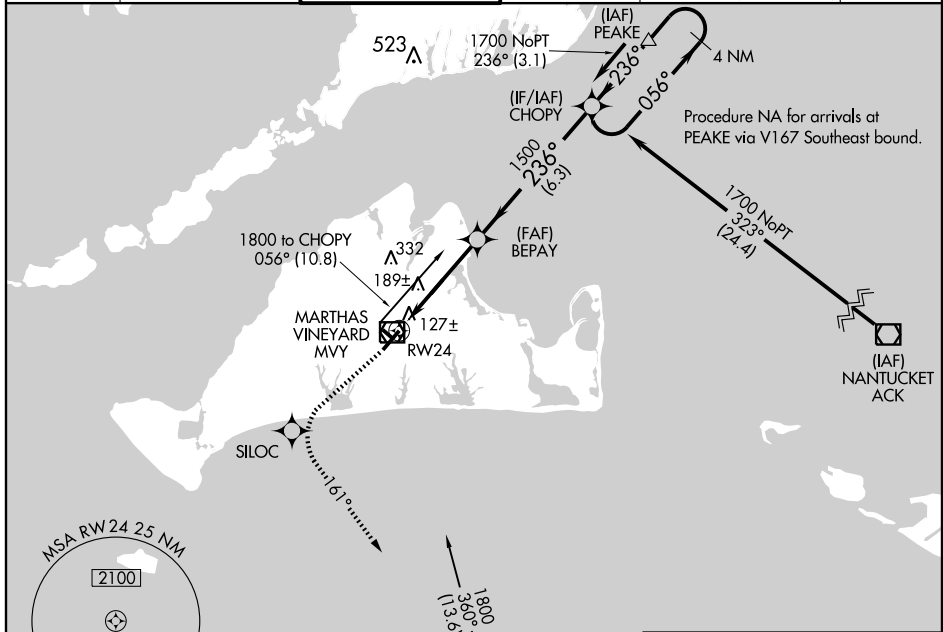
VINEYARD HAVEN / MARTHAS VINEYARD (MVY)

WAAS CH 48804 W24A	APP CRS 236°	Rwy Idg TDZE Apt Elev	5500 62 67
--	------------------------	-----------------------------	---------------------------------------

⚠ If local altimeter setting not received, use Hyannis altimeter setting and increase all DAs/MDAs 60 feet. VDP and Baro-VNAV NA when using Hyannis altimeter setting. For uncompensated Baro-VNAV systems, LNAV/VNAV NA below -1.5°C (5°F) or above 48°C (118°F). For inoperative MALSR, increase LPV all Cats visibility to RVR 5000 and LNAV Cat D visibility to RVR 6000. DME/DME RNP-0.3 NA.

MALSR 	MISSED APPROACH: Climb to 2500 direct SILOC and left turn via 161° track to CLAMY and hold.
-----------	---

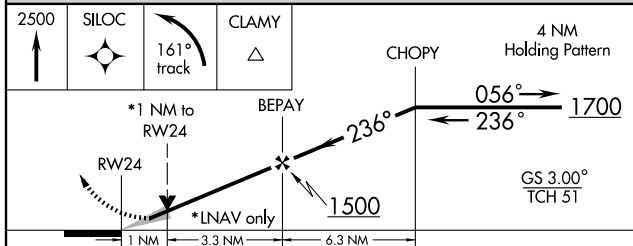
ATIS 126.25	CAPE APP CON * 119.7	VINEYARD TOWER * 121.4 (CTAF)	GND CON 121.8	CLNC DEL 121.8 119.7 (Tower closed)	UNICOM 122.95
-----------------------	--------------------------------	---	-------------------------	---	-------------------------



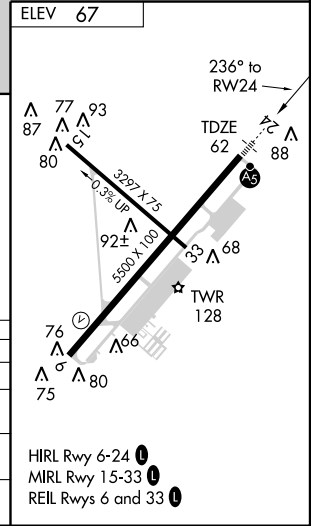
NE-1, 22 OCT 2009 to 19 NOV 2009

NE-1, 22 OCT 2009 to 19 NOV 2009

2500	SILOC	161° track	CLAMY	4 NM Holding Pattern
------	-------	------------	-------	----------------------



CATEGORY	A	B	C	D
LPV DA		341/24	279 (300-½)	
LNAV/VNAV DA		392/40	330 (400-¾)	
LNAV MDA		440/24	378 (400-½)	440/50 378 (400-1)
CIRCLING	460-1 393 (400-1)	520-1 453 (500-1)	520-1½ 453 (500-1½)	620-2 553 (600-2)



HIRL Rwy 6-24
MIRL Rwy 15-33
REIL Rws 6 and 33