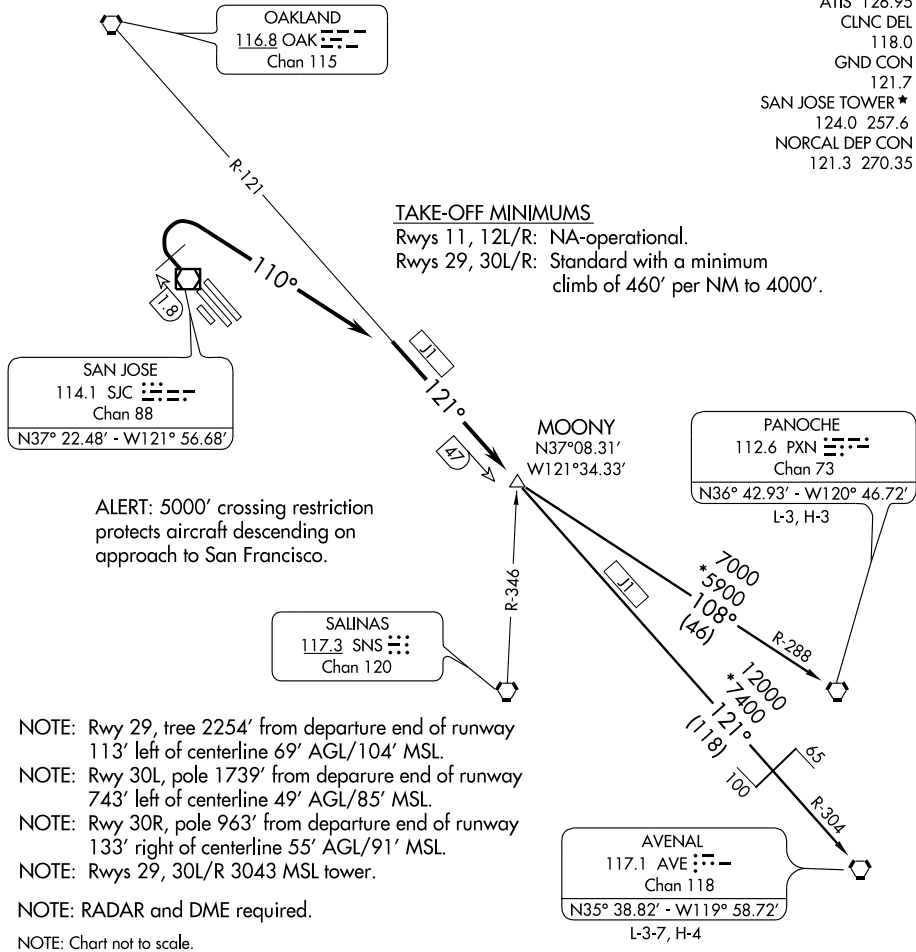


SAN JOSE NINE DEPARTURE

ATIS 126.95
CLNC DEL 118.0
GND CON 121.7
SAN JOSE TOWER * 124.0 257.6
NORCAL DEP CON 121.3 270.35

TAKE-OFF MINIMUMS

Rwys 11, 12L/R: NA-operational.
Rwys 29, 30L/R: Standard with a minimum climb of 460' per NM to 4000'.



ALERT: 5000' crossing restriction protects aircraft descending on approach to San Francisco.

- NOTE: Rwy 29, tree 2254' from departure end of runway 113' left of centerline 69' AGL/104' MSL.
- NOTE: Rwy 30L, pole 1739' from departure end of runway 743' left of centerline 49' AGL/85' MSL.
- NOTE: Rwy 30R, pole 963' from departure end of runway 133' right of centerline 55' AGL/91' MSL.
- NOTE: Rwys 29, 30L/R 3043 MSL tower.
- NOTE: RADAR and DME required.
- NOTE: Chart not to scale.

DEPARTURE ROUTE DESCRIPTION

TAKE-OFF RUNWAYS 11, 12L/R: NA

TAKE-OFF RUNWAYS 29, 30L/R: Climb via runway heading to SJC 1.8 DME northwest of SJC VOR/DME. Then turn right heading 110° to intercept and proceed via OAK R-121 to MOONY INT. Thence....

.... via (transition) or (assigned route). Maintain 5000, expect clearance to filed altitude ten minutes after departure.

AVENAL TRANSITION (SJC9.AVE): From over MOONY INT via OAK R-121 and AVE R-304 to AVE VORTAC.

PANOCHÉ TRANSITION (SJC9.PXN): From over MOONY INT via PXN R-288 to PXN VORTAC.

SW-2, 22 OCT 2009 to 19 NOV 2009

SW-2, 22 OCT 2009 to 19 NOV 2009