

# EL NIDO FIVE ARRIVAL

ST-693 (FAA)

NORMAN Y. MINETA SAN JOSE INTL  
SAN JOSE, CALIFORNIA

NORCAL APP CON  
126.475 317.775  
ATIS 126.95

SW-2, 22 OCT 2009 to 19 NOV 2009

**COALDALE TRANSITION [OAL.HYP5]:** From over OAL VORTAC via OAL R-216 and HYP R-067 to HYP VOR/DME. Thence . . . .  
**MUSTANG TRANSITION [FMG.HYP5]:** From over FMG VORTAC via FMG R-167 and CZQ R-348 to ELCAP INT, then via HYP R-032 to HYP VOR/DME. Thence . . . .

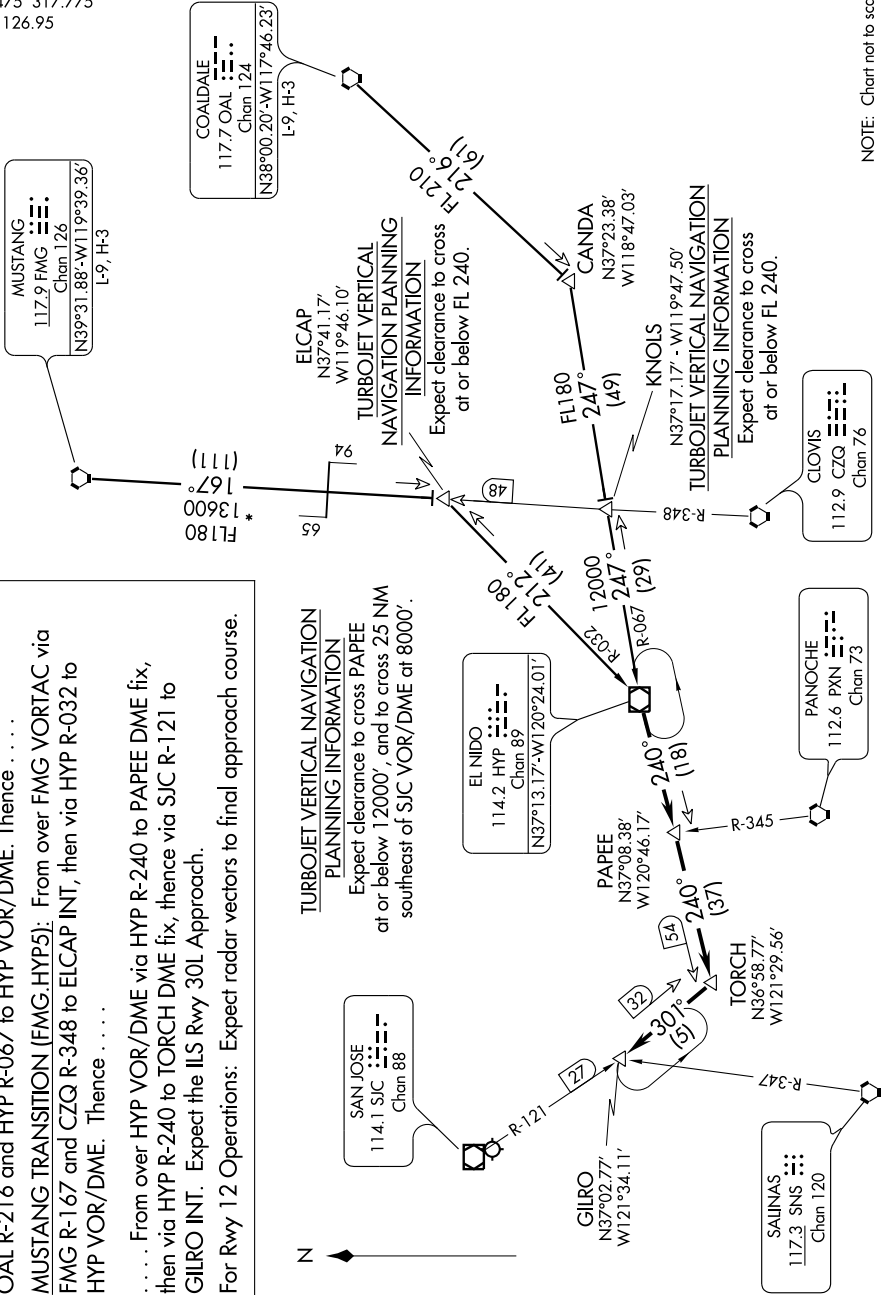
. . . . From over HYP VOR/DME via HYP R-240 to PAPEE DME fix, then via HYP R-240 to TORCH DME fix, thence via SJC R-121 to GILRO INT. Expect the ILS Rwy 30L Approach.

For Rwy 12 Operations: Expect radar vectors to final approach course.

**TURBOJET VERTICAL NAVIGATION PLANNING INFORMATION**  
Expect clearance to cross PAPEE at or below 12000', and to cross 25 NM southeast of SJC VOR/DME at 8000'.

**TURBOJET VERTICAL NAVIGATION PLANNING INFORMATION**  
Expect clearance to cross at or below FL 240.

**TURBOJET VERTICAL NAVIGATION PLANNING INFORMATION**  
Expect clearance to cross at or below FL 240.



NOTE: Chart not to scale.

SW-2, 22 OCT 2009 to 19 NOV 2009

# EL NIDO FIVE ARRIVAL