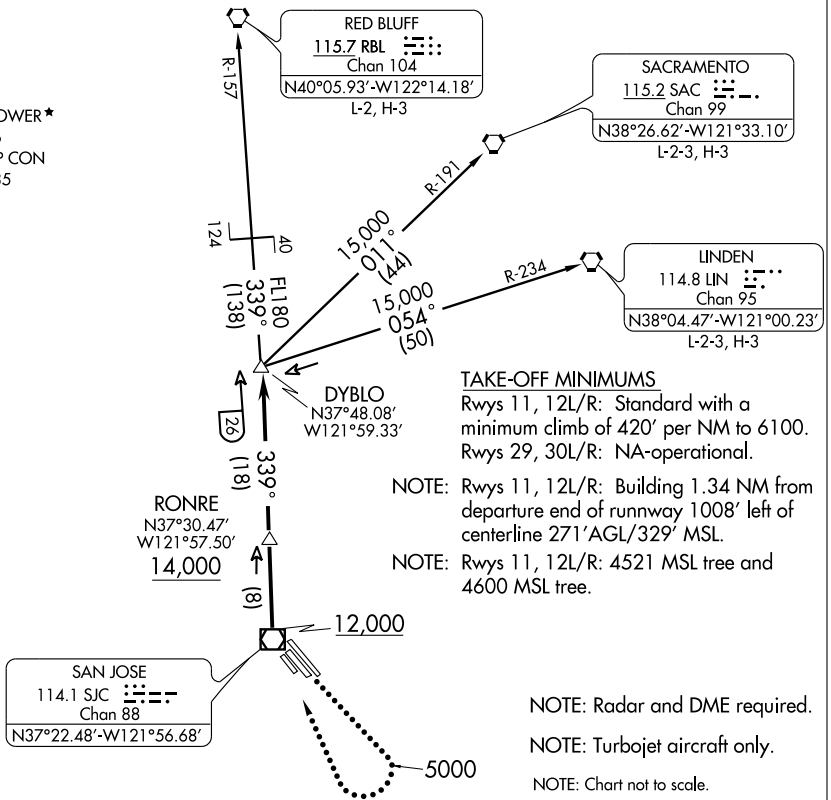


DANVILLE TWO DEPARTURE

SAN JOSE/NORMAN Y. MINETA SAN JOSE INTL (SJC)
SL-693 (FAA) SAN JOSE, CALIFORNIA

ATIS 126.95
CLNC DEL 118.0
GND CON 121.7
SAN JOSE TOWER * 124.0 257.6
NORCAL DEP CON 121.3 270.35



SW-2, 22 OCT 2009 to 19 NOV 2009

SW-2, 22 OCT 2009 to 19 NOV 2009

DEPARTURE ROUTE DESCRIPTION

TAKE-OFF RUNWAYS 29, 30L/R: NA.

TAKE-OFF RUNWAYS 11, 12L/R: Climb via runway heading for vector to SJC VOR/DME, then via SJC R-339 to DYBLO INT, thence via (transition) or (assigned route). Cross SJC VOR/DME at or above 12,000'. Cross RONRE/8 DME at or above 14,000', maintain assigned altitude. Aircraft filing FL240 and above expect further clearance to filed altitude after passing SJC VOR/DME.

LOST COMMUNICATIONS:

Runways 11, 12L/R: If not in contact with departure control after reaching 5000', turn right direct SJC VOR/DME thence via SJC VOR/DME R-339 to DYBLO INT, thence via (transition) or (assigned route). Cross SJC VOR/DME at or above 12,000', cross RONRE/8 DME at or above 14,000', then climb to filed altitude.

LINDEN TRANSITION (DANV2.LIN): From over DYBLO INT via LIN R-234 to LIN VORTAC.

RED BLUFF TRANSITION (DANV2.RBL): From over DYBLO INT via SJC R-339 and RBL R-157 to RBL VORTAC.

SACRAMENTO TRANSITION (DANV2.SAC): From over DYBLO INT via SAC R-191 to SAC VORTAC.