

# BRINY ONE ARRIVAL

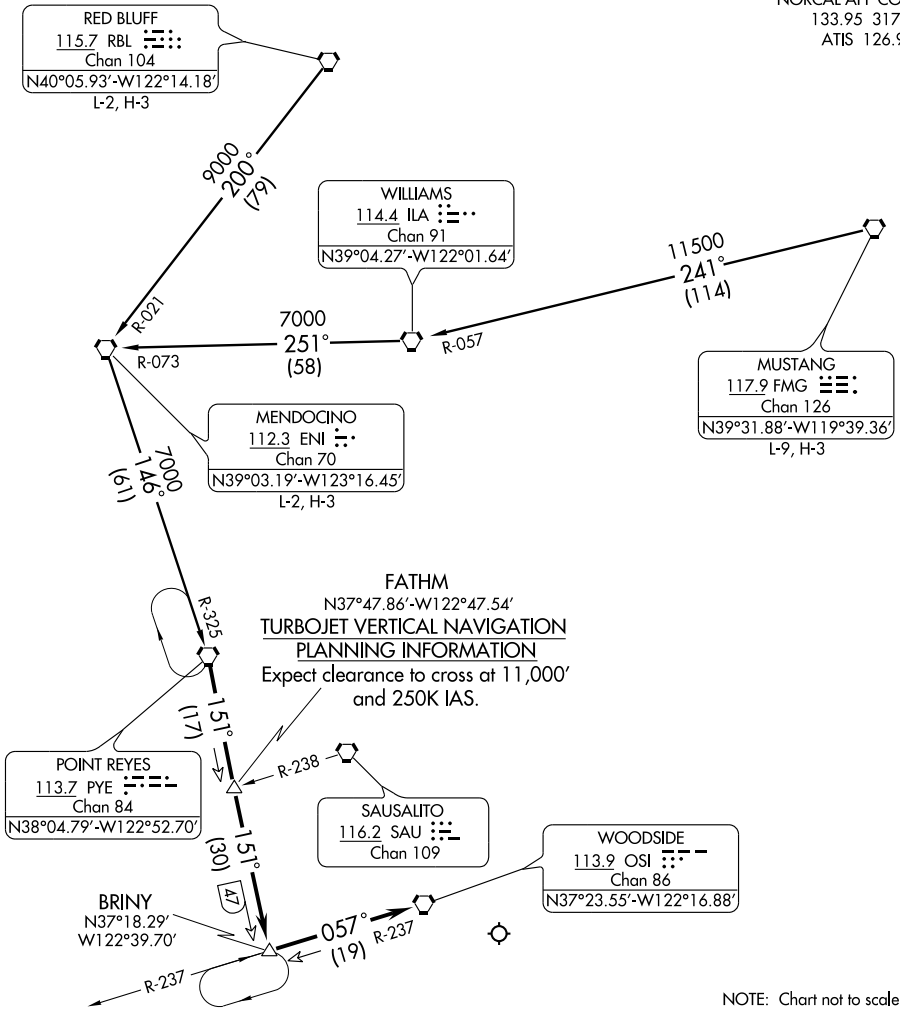
ST-693 (FAA)

NORMAN Y. MINETA SAN JOSE INTL  
SAN JOSE, CALIFORNIA

NORCAL APP CON  
133.95 317.6  
ATIS 126.95

SW-2, 22 OCT 2009 to 19 NOV 2009

SW-2, 22 OCT 2009 to 19 NOV 2009



MENDOCINO TRANSITION (ENI.BRINY1): From over ENI VORTAC via ENI R-146 and PYE R-325 to PYE VORTAC. Thence . . . .

MUSTANG TRANSITION (FMG.BRINY1): From over FMG VORTAC via FMG R-241 to ILA VORTAC then via ILA R-251 to ENI VORTAC, then via ENI R-146 to PYE VORTAC. Thence . . . .

RED BLUFF TRANSITION (RBL.BRINY1): From over RBL VORTAC via RBL R-200 and ENI R-146 to PYE VORTAC. Thence . . . .

. . . . From over PYE VORTAC via PYE R-151 to BRINY INT/DME, then via OSI R-237 to OSI VORTAC. Expect radar vectors to Rwy 12R final approach course.

# BRINY ONE ARRIVAL